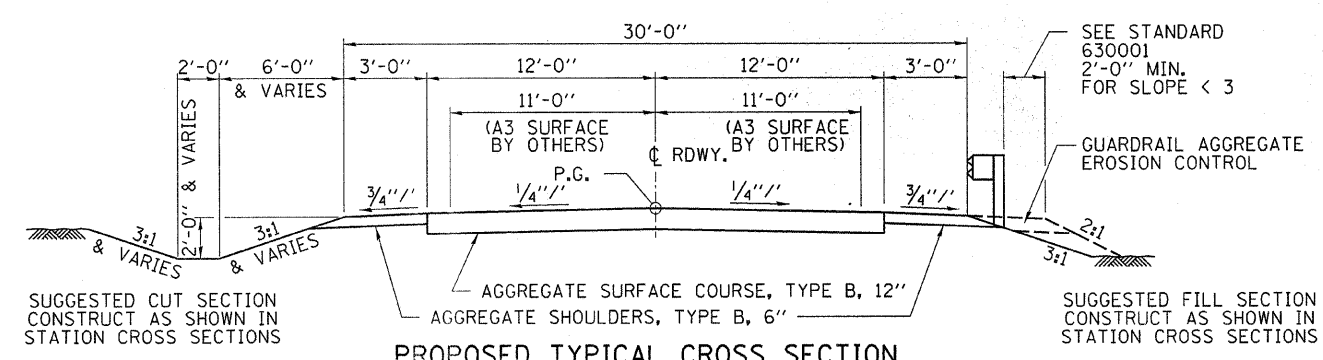
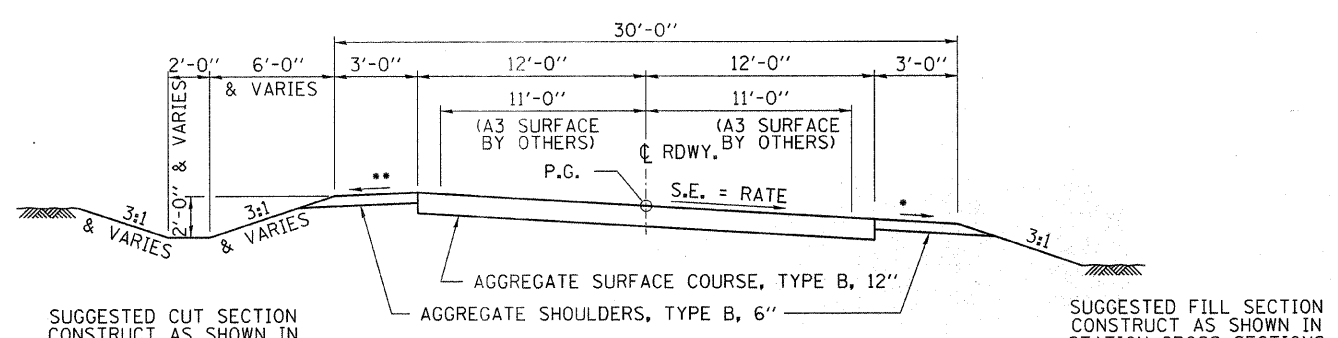


EXISTING TYPICAL CROSS SECTION
STA. 7+25 TO STA. 20+00



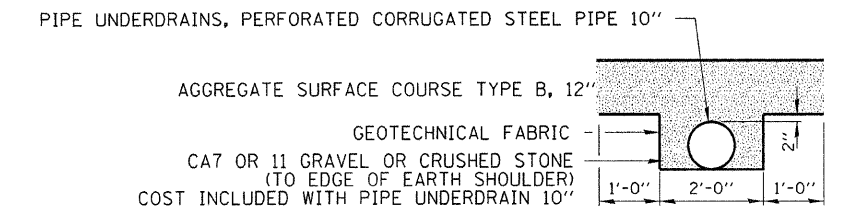
PROPOSED TYPICAL CROSS SECTION
STA. 7+25.00 TO STA. 8+81.09****
STA. 11+09.93 TO STA. 14+14.24
STA. 15+75.76 TO STA. 18+71.21

**** TRANSITION PAVEMENT AND SHOULDERS TO EXISTING FROM STA. 7+25 TO STA. 7+75

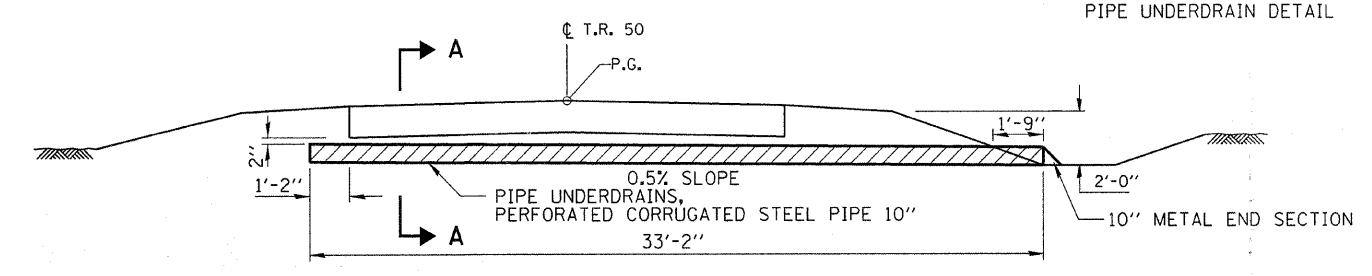


PROPOSED TYPICAL CROSS SECTION
STA. 8+81.09 TO STA. 11+69.93
STA. 18+71.21 TO STA. 20+00.00****

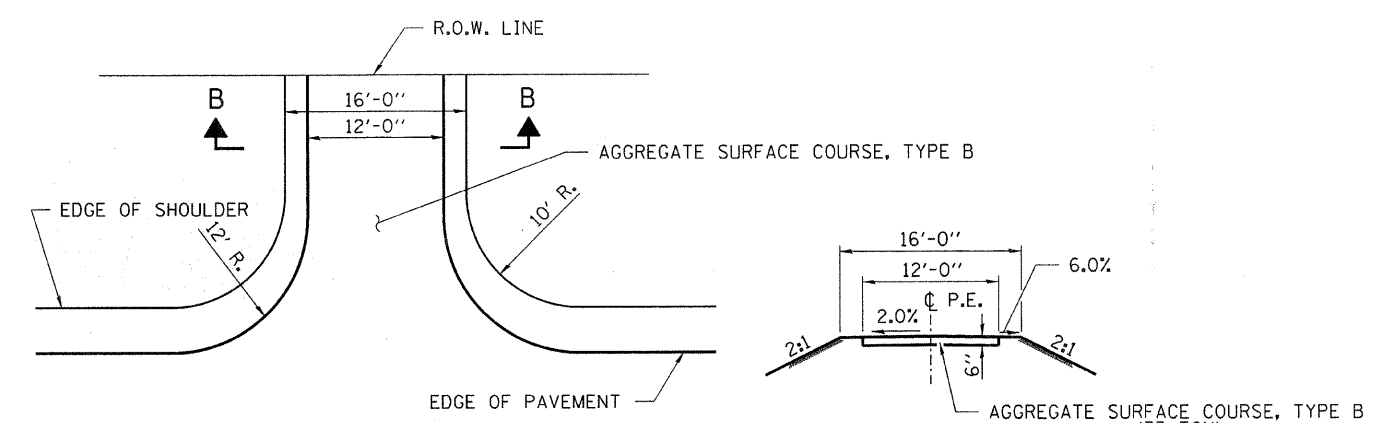
- S.E. SLOPE OR 6% WHICHEVER IS GREATER
- ** ALGEBRAIC DIFFERENCE BETWEEN SHOULDER SLOPE AND SUPER ELEVATION RATE NOT TO EXCEED 10% WITH A MAXIMUM SLOPE OF 6%.
- *** TRANSITION PAVEMENT AND SHOULDERS TO EXISTING FROM STA. 19+50 TO STA. 20+00



DETAIL A
PIPE UNDERDRAIN DETAIL



PROPOSED TYPICAL PIPE UNDERDRAIN CROSS SECTION



PRIVATE ENTRANCE DETAIL

SECTION B-B

FILE NAME = 070373-shr-typical.sldgn	USER NAME =	DESIGNED - L.F.S.	REVISED -	STATE OF ILLINOIS WOODFORD COUNTY HIGHWAY DEPARTMENT	HLR HAMPTON, LENZINI & RENWICK, INC. CIVIL & STRUCTURAL ENGINEERS LAND SURVEYORS	TYPICAL SECTIONS AND MISC. DETAILS	T.R.	SECTION	COUNTY	TOTAL SHEETS	SHEET NO.
PLOT SCALE =	CHECKED - S.W.M.	REVISED -	50				05-08145-00-BR	WOODFORD	47	5	
PLOT DATE = 2/2/2009	DATE - 10/17/08	REVISED -	METAMORA R.D.				CONTRACT NO. 89448				
							FED. ROAD DIST. NO.	ILLINOIS FED. AID PROJECT			