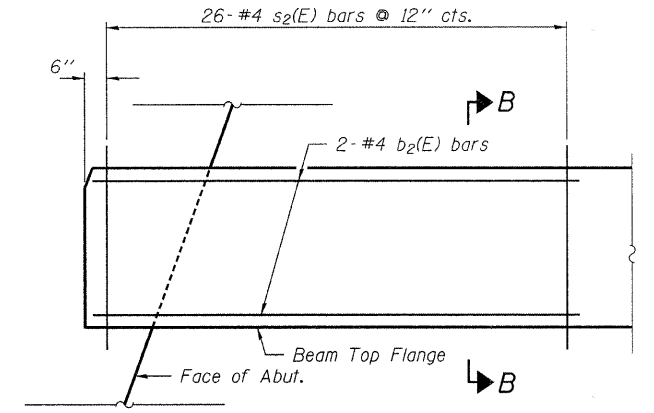
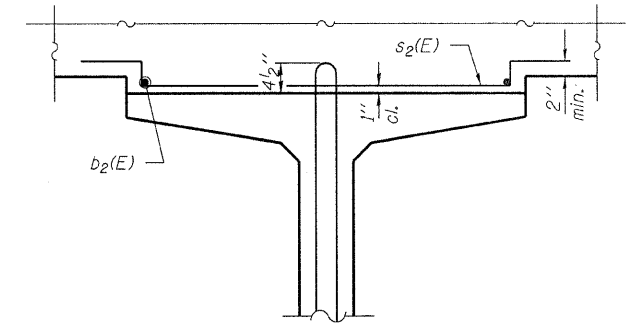


PLAN

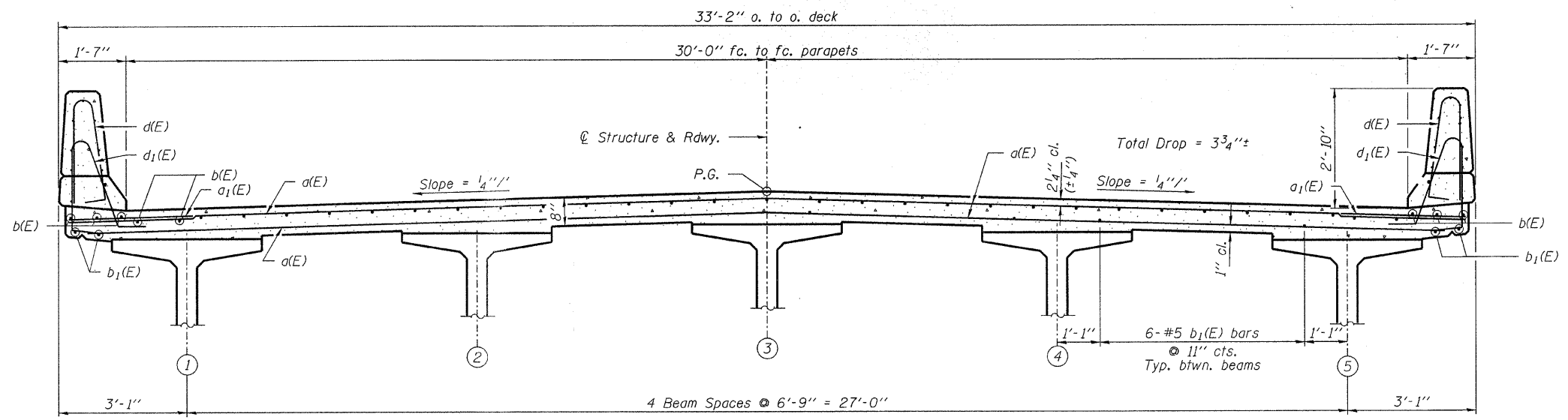
* Order a(E) bars full length. Cut in field to fit skew and use remainder of bars in opposite end of deck.



FILLET REINFORCEMENT DETAIL
(Each Beam, Each End)



SECTION B-B



CROSS SECTION
(Looking North)

MIN. BAR LAP
#5 Bar = 1'-8"

Notes:
See sheet 9 for superstructure details, parapet reinforcement and Bill of Material.
For Section A-A and diaphragm details see sheet 10.
Bars indicated thus 28x5-#5 etc. indicates 28 lines of bars with 5 lengths per line.

DESIGNED - S.M.S.
CHECKED - M.D.C.
DRAWN - D.A.B.
CHECKED - S.W.M.

HAMPTON, LENZINI & RENWICK, INC.
CIVIL & STRUCTURAL ENGINEERS
LAND SURVEYORS

HLR 3085 STEVENSON DRIVE, SUITE 201
SPRINGFIELD, ILLINOIS 62703
(217) 548-3400

PROJECT NUMBER: 07.0373.130 DATE: 02/02/09

SHEET NO. 6 16 SHEETS	T.R.	SECTION	COUNTY	TOTAL SHEETS	SHEET NO.
	50	05-08145-00-BR	WOODFORD	47	34
METAMORA ROAD DISTRICT			CONTRACT NO. 89448		
FED. ROAD DIST. NO.		ILLINOIS	FED. AID PROJECT		

SUPERSTRUCTURE
STRUCTURE NO. 102 - 3210