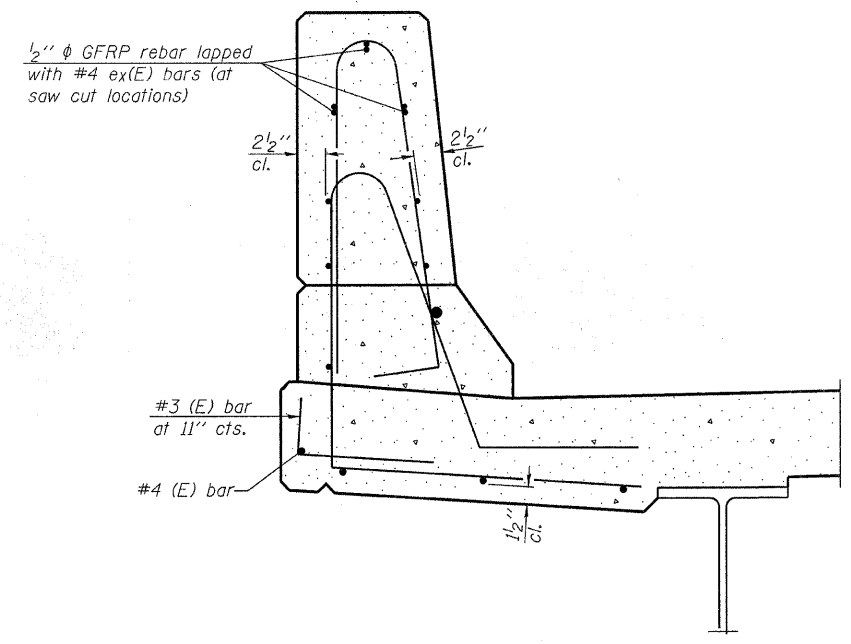
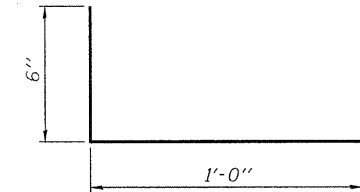


**SECTION**  
(Showing dimensions)

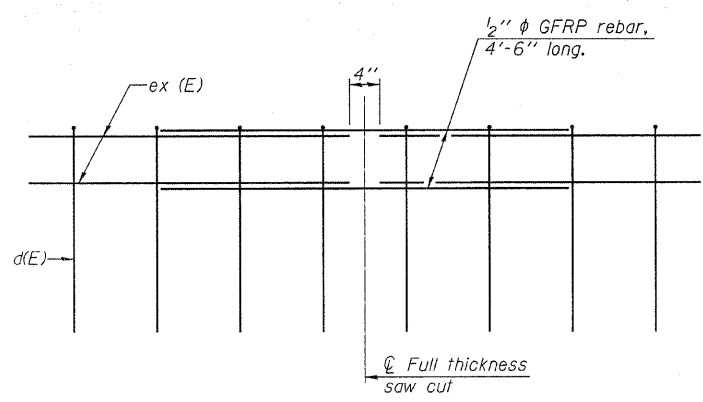


**SECTION**  
(Showing reinforcement clearances for slip forming and additional reinforcement bars)

**GENERAL NOTES**  
 All dimensions shall remain the same as shown on contract plans, except dimensions A and B which are to be revised as shown to provide additional clearance. Additional concrete needed to revise dimension A and B = 0.0165 cu. yds./ft. of parapet.  
 Place aluminum sheet in curb portion at and near piers. Full thickness saw cut at all joint locations in lieu of cork joint filler.



**#3 (E) BAR**



**GFRP REBAR STIFFENING DETAIL**  
(Place as shown in parapet section at each parapet joint location.)

DESIGNED - S.M.S.
CHECKED - M.D.C.
DRAWN - D.A.B.
CHECKED - S.W.M.

SFP-34

10-1-08

**HAMPTON, LENZINI & RENWICK, INC.**  
 CIVIL & STRUCTURAL ENGINEERS  
 LAND SURVEYORS  
 3085 STEVENSON DRIVE, SUITE 201  
 SPRINGFIELD, ILLINOIS 62703  
 (217) 546-3400  
 PROJECT NUMBER: 07-0373.130 DATE: 02/02/09

SHEET NO. 7 16 SHEETS	T.R.	SECTION	COUNTY	TOTAL SHEETS	SHEET NO.
	50	05-08145-00-BR	WOODFORD	47	35
METAMORA ROAD DISTRICT			CONTRACT NO. 89448		
FED. ROAD DIST. NO.		ILLINOIS	FED. AID PROJECT		

**CONCRETE PARAPET  
 SLIPFORMING OPTION  
 STRUCTURE NO. 102 - 3210**