

BILL OF MATERIAL - S. ABUT.

BAR	NO.	SIZE	LENGTH	SHAPE
h(E)	32	#7	13'-6"	—
h1(E)	44	#6	14'-0"	—
h2(E)	3	#4	27'-3"	—
h3(E)	3	#4	20'-3"	—
p(E)	12	#8	34'-11"	—
p1(E)	10	#4	34'-11"	—
s2(E)	32	#5	12'-7"	□
s3(E)	2	#5	12'-11"	□
s4(E)	29	#4	5'-8"	□
u(E)	8	#6	12'-9"	—
v1(E)	62	#5	4'-6"	—
v2(E)	11	#5	16'-6"	—
v3(E)	11	#5	18'-4"	—
Concrete Structures			Cu. Yd.	22.6
Concrete Encasement			Cu. Yd.	2.6
Reinf. Bars, Epoxy Coated			Pound	4,660
Furnishing Steel Piles HP14x73			Foot	136
Driving Piles			Foot	136
Test Pile Steel HP14x73			Each	1
Pile Shoes			Each	4

Notes:
 For Bar Splicer details see sheet 17.
 For Concrete Encasement details see sheet 18.
 Pour steps monolithically with cap.

**SOUTH ABUTMENT
 STRUCTURE NO. 102 - 3210**

PILE DATA

Type: Steel HP14x73 w/Pile Shoe
 No. Req'd. (S. Abut.): 5
 Factored Resistance Available (Rf): 276 Kips/Pile
 Nominal Required Bearing (Rn): 578 Kips/Pile
 Est. Length: 34 Ft/Pile

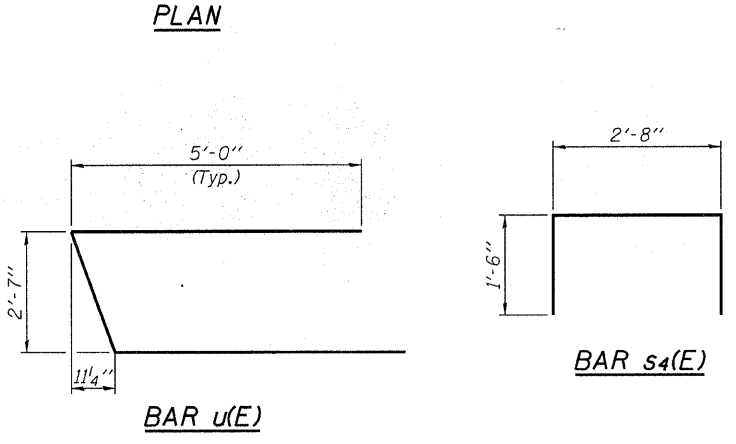
Notes: * Includes one test pile to be driven in permanent locations at the South Abutment.

The Steel H-Piles shall be according to AASHTO M270 Grade 50.

The test piles shall be driven to 110 percent of the Nominal Required Bearing indicated in the pile data information.

DESIGNED - S.M.S.
 CHECKED - M.D.C.
 DRAWN - D.A.B.
 CHECKED - S.W.M.

FIELD CUTTING DIAGRAM
 Order v2(E) & v3(E) bars full length. Cut as shown and use remainder of bars in opposite face.



HAMPTON, LENZINI & RENWICK, INC.
 CIVIL & STRUCTURAL ENGINEERS
 LAND SURVEYORS

HLR 3085 STEVENSON DRIVE, SUITE 201
 SPRINGFIELD, ILLINOIS 62703
 (217) 548-3400

PROJECT NUMBER: 07.0373.130 DATE: 02/02/09

SHEET NO. 12 16 SHEETS	T.R.	SECTION	COUNTY	TOTAL SHEETS	SHEET NO.
	50	05-08145-00-BR	WOODFORD	47	40
METAMORA ROAD DISTRICT			CONTRACT NO. 89448		
FED. ROAD DIST. NO.		ILLINOIS FED. AID PROJECT			