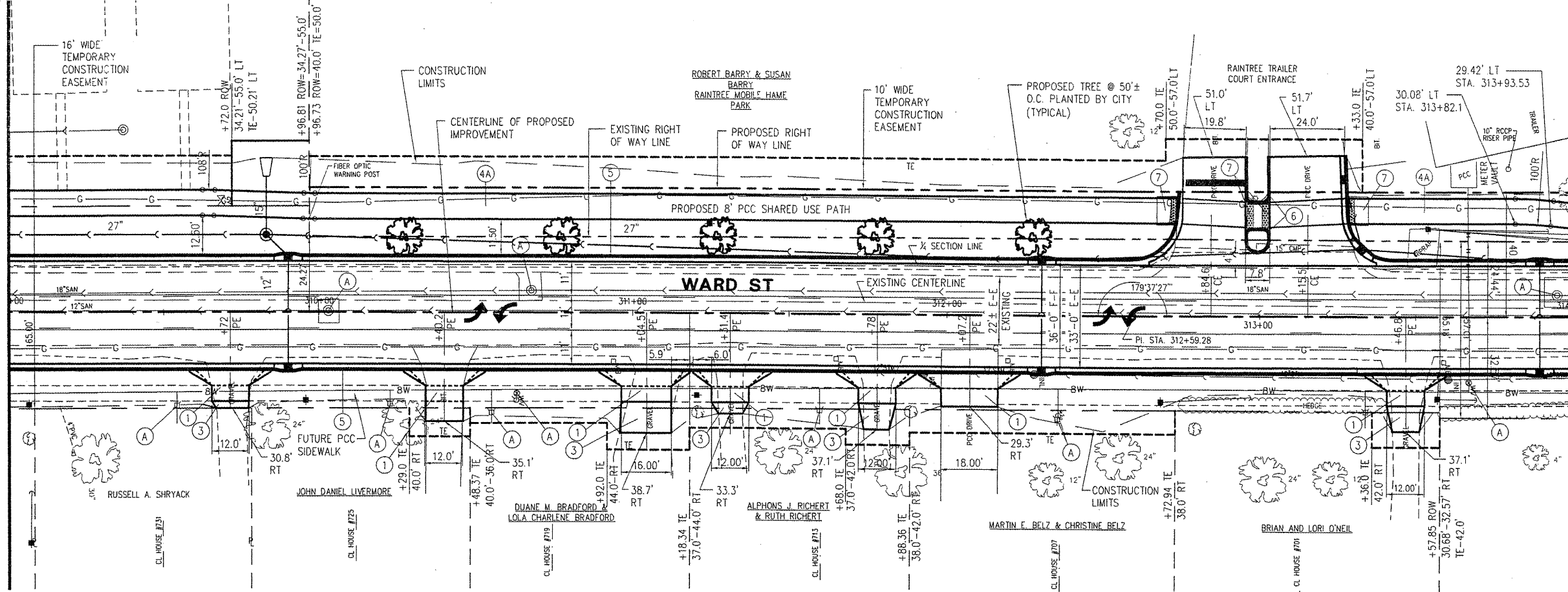


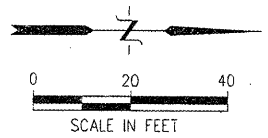
MATCHLINE STA. 309+00

MATCHLINE STA. 314+00



CITY OF MACOMB - WARD STREET	
SEC. 06-00139-00-PV	F.A.U. 6919
PROJ. M05040 (009)	
CONTRACT No. 89469	SHT 9 OF 59

SHEET NO
9
of
59

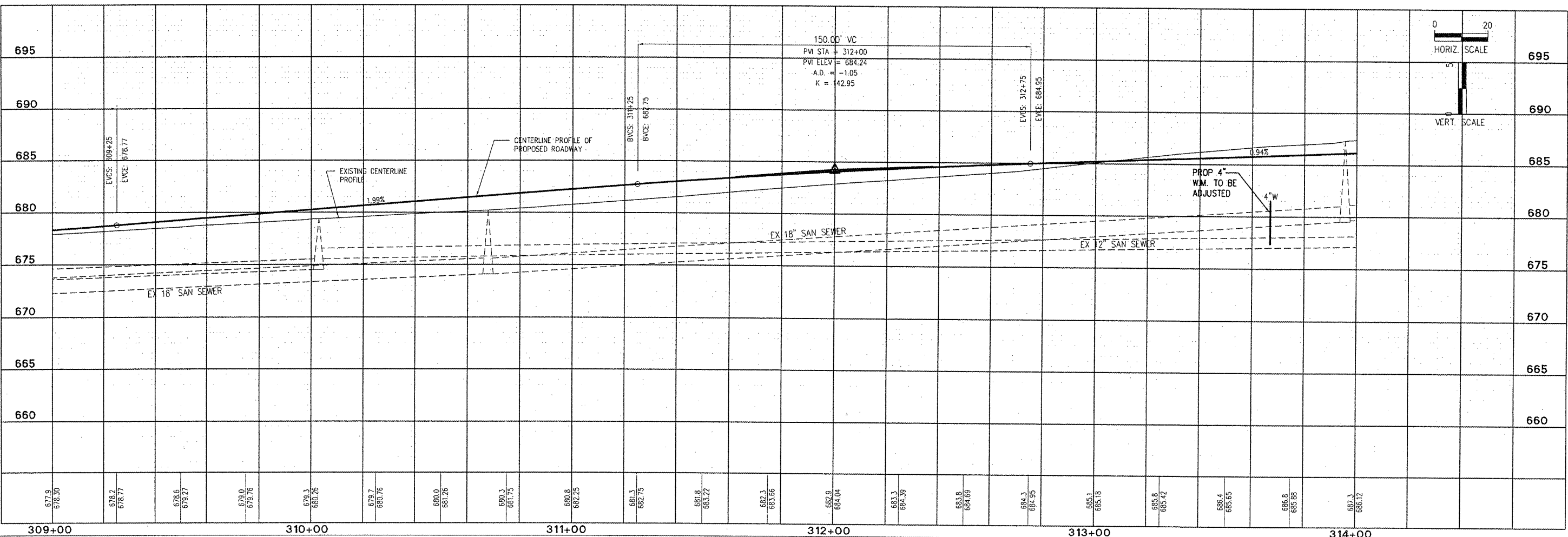


- ITEM LEGEND**
- ① PCC DRIVEWAY PAVEMENT, 6"
 - ② PCC DRIVEWAY PAVEMENT, 7"
 - ③ AGGREGATE SURFACE COURSE, TYPE A, 6"
 - ④ PCC SIDEWALK, 4"
 - ④A PCC SIDEWALK 5"
 - ⑤ COMB. CONC. CURB & GUTTER, TYPE B6.18
 - ⑥ CONCRETE CURB, TYPE B, 6"
 - ⑦ SIDEWALK RAMP W/ DETECTABLE WARNING
 - ⑧ AGGREGATE SURFACE COURSE, TYPE A, 8"
 - Ⓐ MANHOLE, VALVE BOX, WATER SERVICE BOX OR METER VAULT TO BE ADJUSTED

McClure
Engineering Associates, Inc.

114 East Jackson Street
Macomb, Illinois 61455
13091 833-4594 FAX 13091 837-4909
Design firm License #184-000916 Copyright 2008 by McClure Engineering Associates, Inc.

PLOTTING SCALE:	1" = 20'
DRAWN BY:	TAB/APS
CHECKED BY:	ECM
DATE:	OCTOBER 2009



REVISIONS	
NO.	DATE

WARD STREET IMPROVEMENTS
PLAN AND PROFILE - STA. 309+00 TO 314+00
CITY OF MACOMB

SOUTH WARD ST.
FILE NAME: W:\DRAWINGS\MACOMB\WARDST\WARD-ST-2007 FIELD BOOK No. 2257 JOB NUMBER: 07-28-09099