

**McClure**  
 Engineering Associates, Inc.  
 114 East Jackson Street  
 Macomb, Illinois 61455  
 (309) 831-4594  
 Design Firm License #18A-000816 Copyright 2008 by McClure Engineering Associates, Inc.

**STAGE 5**

**CONSTRUCTION**

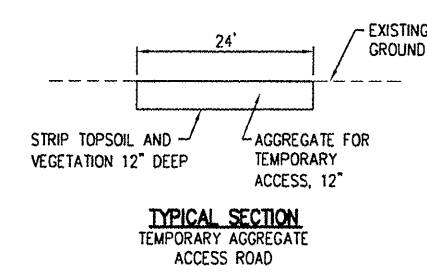
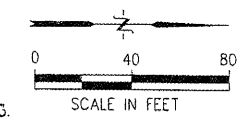
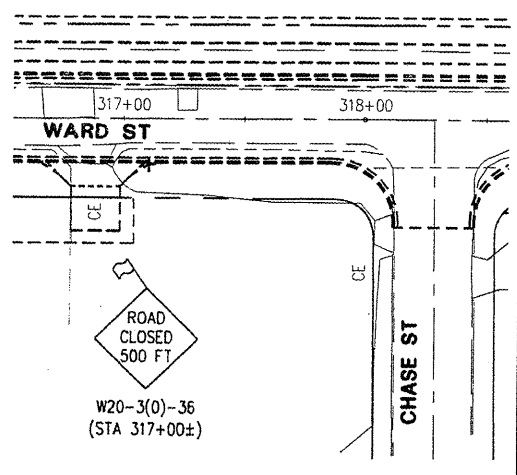
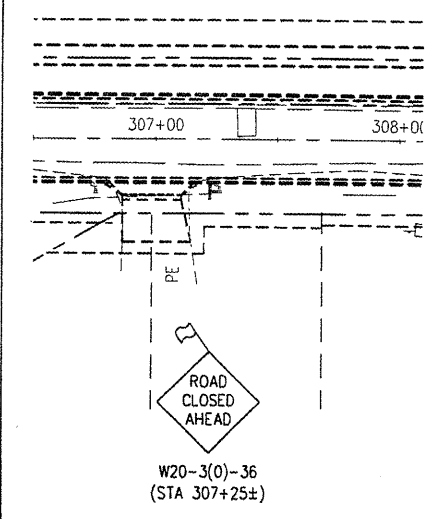
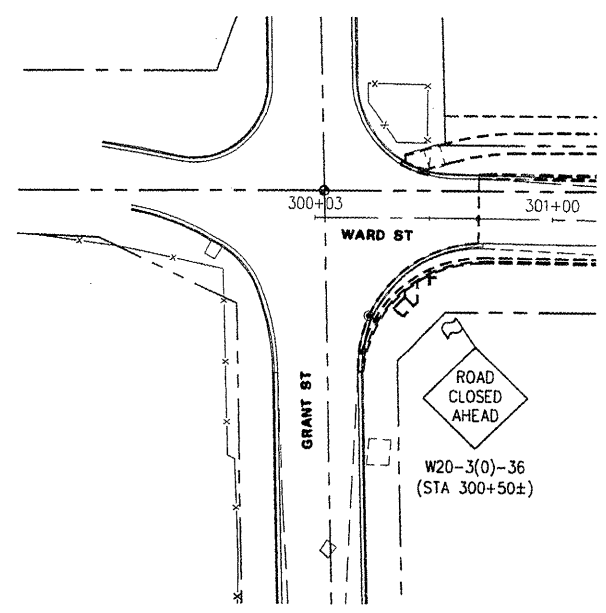
1. CONSTRUCT TEMPORARY ACCESS TO DRIVEWAY AT STA. 324+91.3.
2. REMOVE EXISTING PAVEMENT AND OTHER ITEMS.
3. CONSTRUCT CROSSROAD AND LATERAL STORM SEWER.
4. PERFORM EARTHWORK.
5. FINAL UTILITY ADJUSTMENTS SHALL BE PERFORMED.
6. CONSTRUCT TEMPORARY GRAVEL ACCESS ROAD CONNECTING WARD STREET TO WEST PIPER STREET.
7. CONSTRUCT CURB AND GUTTER AND PAVEMENT.
8. DRIVEWAYS AT STA. 322+78.5 AND 324+91.3 SHALL NOT BE CONSTRUCTED UNTIL STAGE 5 IS OPEN TO TRAFFIC AND TEMPORARY AGGREGATE BETWEEN DRIVEWAYS IS REMOVED.
9. ALL OTHER DRIVEWAY APRONS, SIDEWALK, AND OTHER ITEMS WITHIN LIMITS OF STAGE 5 CAN BE COMPLETED NOW OR IN STAGE 6.
10. REMOVE TEMPORARY DRIVEWAY ACCESS AFTER OPENING WARD STREET BACK UP TO TRAFFIC.

**TRAFFIC**

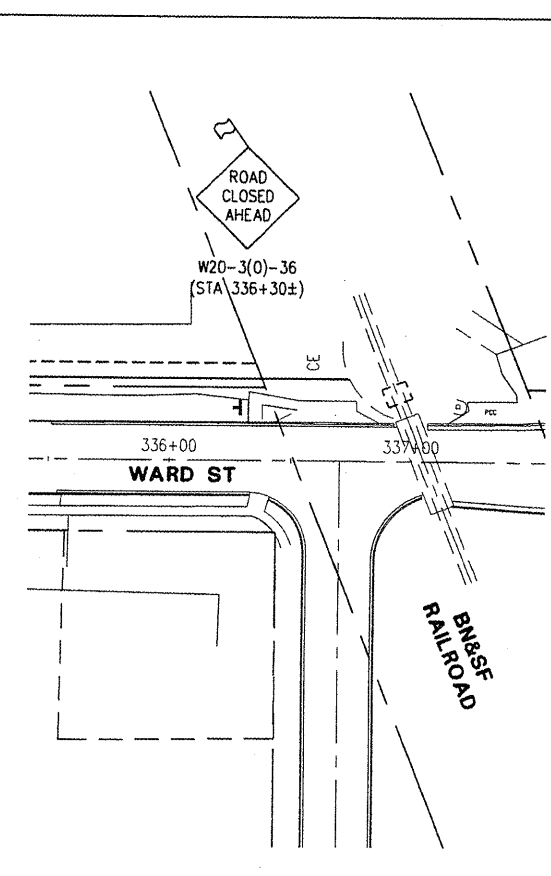
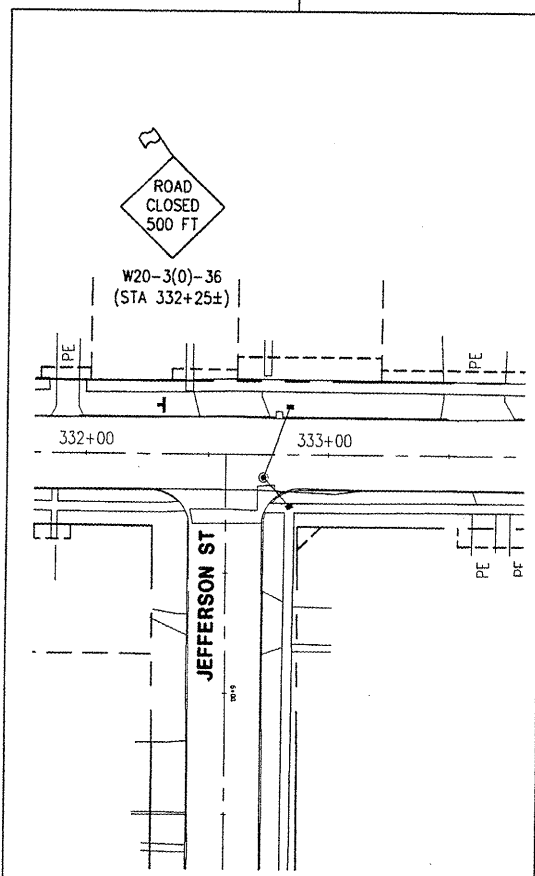
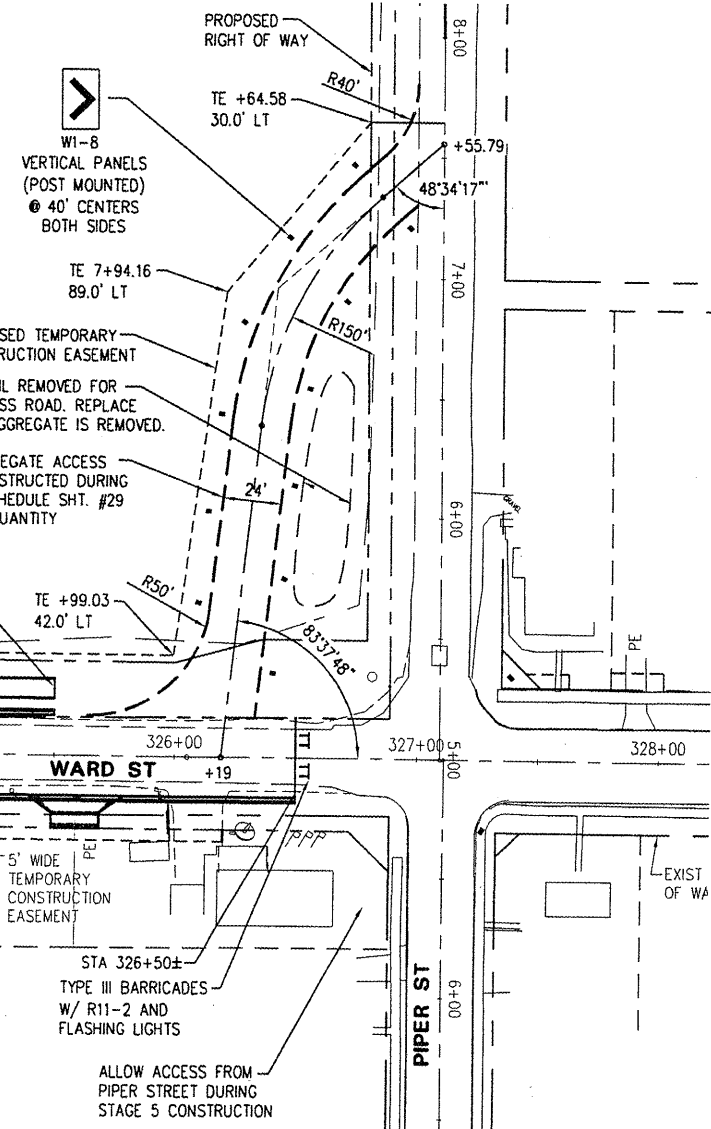
- A. CONSTRUCT IMPROVEMENTS FROM STA. 323+80 TO STA. 326+50 WHILE CLOSING THIS PORTION OF SOUTH WARD STREET TO ALL TRAFFIC. WARD STREET SHALL BE CLOSED TO THRU TRAFFIC FROM STA. 322+00 TO STA. 323+80. TWO-LANE, TWO-LANE, 2-WAY TRAFFIC SHALL BE MAINTAINED OUTSIDE THESE LIMITS.
- B. TEMPORARY GRAVEL ACCESS SHALL BE CONSTRUCTED PRIOR TO CLOSING THIS PORTION OF WARD STREET, CONNECTING DRIVES AT STA. 322+78.5 AND STA. 324+91.3. THIS WILL ALLOW OWNERS OF PROPERTY AT STA. 324+91.3 ACCESS TO WARD STREET SOUTH OF THE CONSTRUCTION LIMITS.
- C. TEMPORARY GRAVEL ACCESS SHALL BE CONSTRUCTED TO CONNECT WARD STREET TO WEST PIPER STREET SOUTH OF THE INTERSECTION. THIS TEMPORARY ACCESS SHALL BE LEFT IN PLACE THROUGH STAGE 5 TO PROVIDE ACCESS TO BUSINESSES ON WEST PIPER STREET WHILE INTERSECTION IMPROVEMENTS ARE BEING CONSTRUCTED.
- D. IMPLEMENT SPECIAL SIGN TABLE IN SPECIAL PROVISIONS.

**STAGE 5**  
 STA 323+80 TO STA 326+50

SEE STAGE 4 FOR TYPICAL SIGN INSTALLATION TO THE EAST, WEST AND SOUTH OF WARD ST AND GRANT ST INTERSECTION



$R=150.00'$   
 $\Delta=41^{\circ}57'42''$   
 $L=109.86'$   
 $e=10.65'$



PLOTTING SCALE: 1" = 40'  
 DRAWN BY: JAH  
 CHECKED BY: JAR  
 DATE: OCTOBER 2008

NO.	REVISIONS	DATE

**WARD STREET IMPROVEMENTS**  
**CONSTRUCTION STAGING PLAN**  
 CITY OF MACOMB

SOUTH WARD ST.  
 FILE NAME: MACOMB\WARDST\WARD-ST-2007-STAGING  
 FIELD BOOK No: 2257 JOB NUMBER: 01-28-08-09  
 MACOMB, ILLINOIS  
 JOB NUMBER: 01-28-08-09