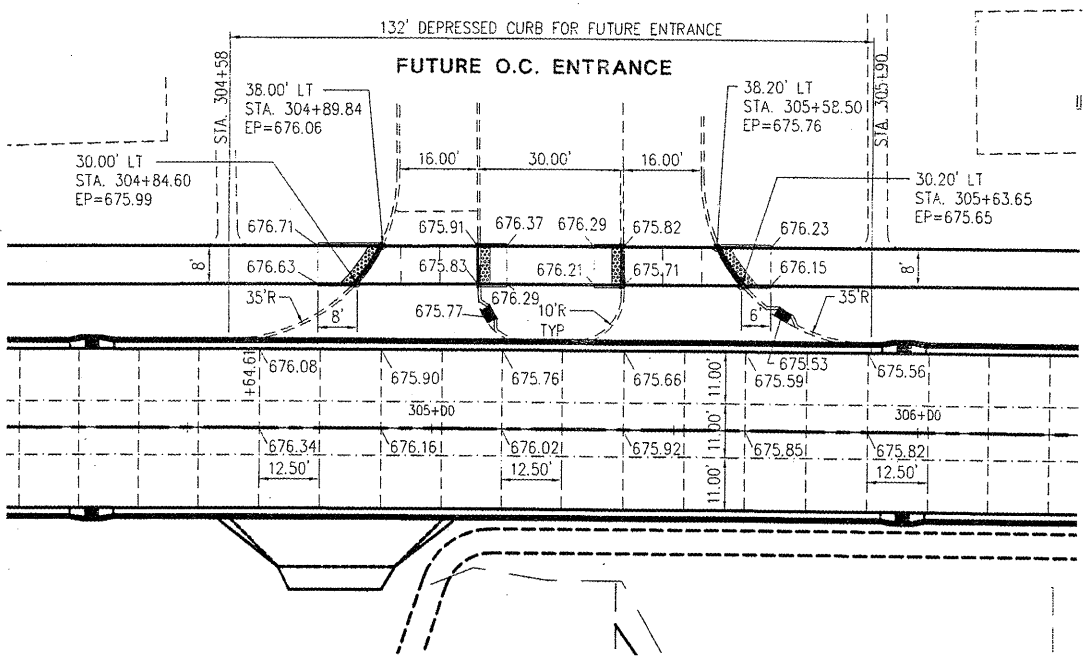


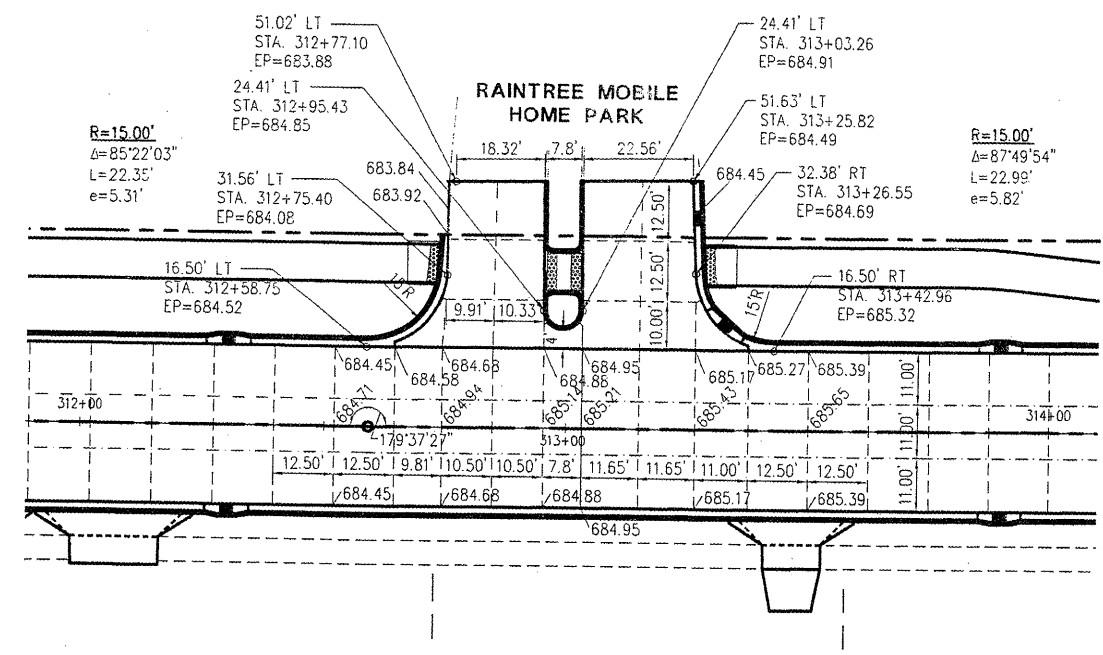
McClure
 Engineering Associates, Inc.
 Macomb, Illinois 61455
 13091 833.454.4909
 FAX 13091 833.454.4909
 Design firm license #184-000816
 Copyright 2008 by McClure Engineering Associates, Inc.

PLOTTING SCALE: 1" = 20'
 DRAWN BY: TAB
 CHECKED BY: JAR
 DATE: OCTOBER 2009

NO.	REVISIONS	ITEM	DATE



FUTURE O.C. ENTRANCE INTERSECTION

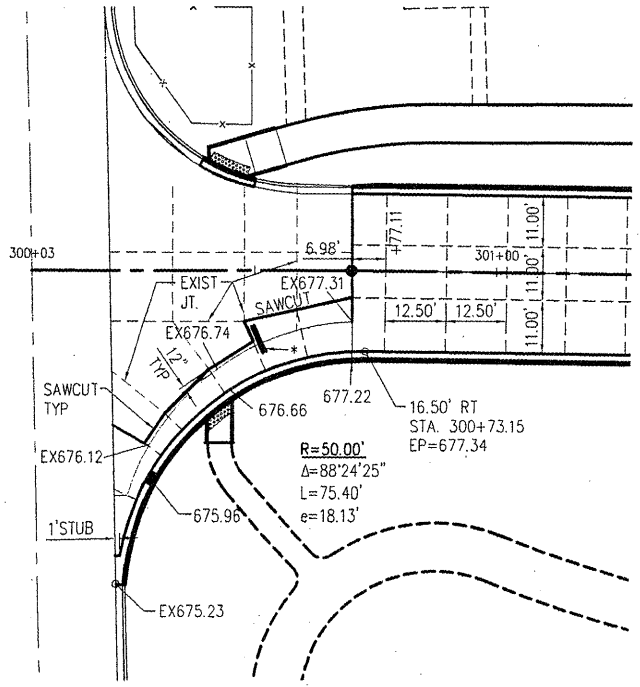


RAINTREE M.H. PARK ENT. INTERSECTION

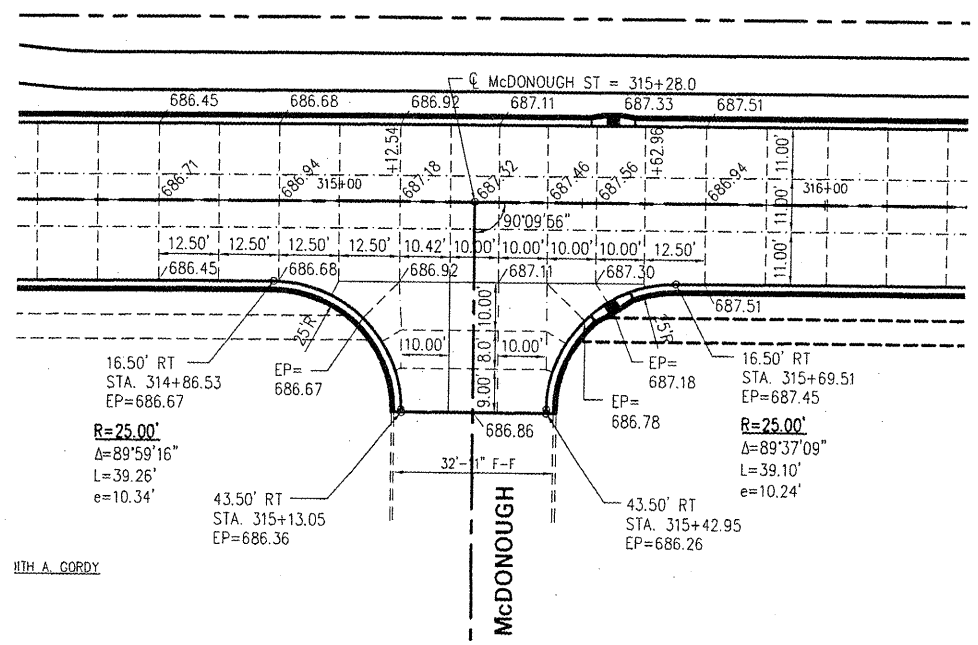
PAVEMENT JOINT LEGEND

- LONGITUDINAL SAWED JOINT OR LONGITUDINAL CONSTRUCTION JOINT (TIE BARS GROUDED IN PLACE)
- LONGITUDINAL OR TRANSVERSE CONSTRUCTION JOINT (TIE BARS GROUDED IN PLACE)
- TRANSVERSE CONTRACTION JOINT

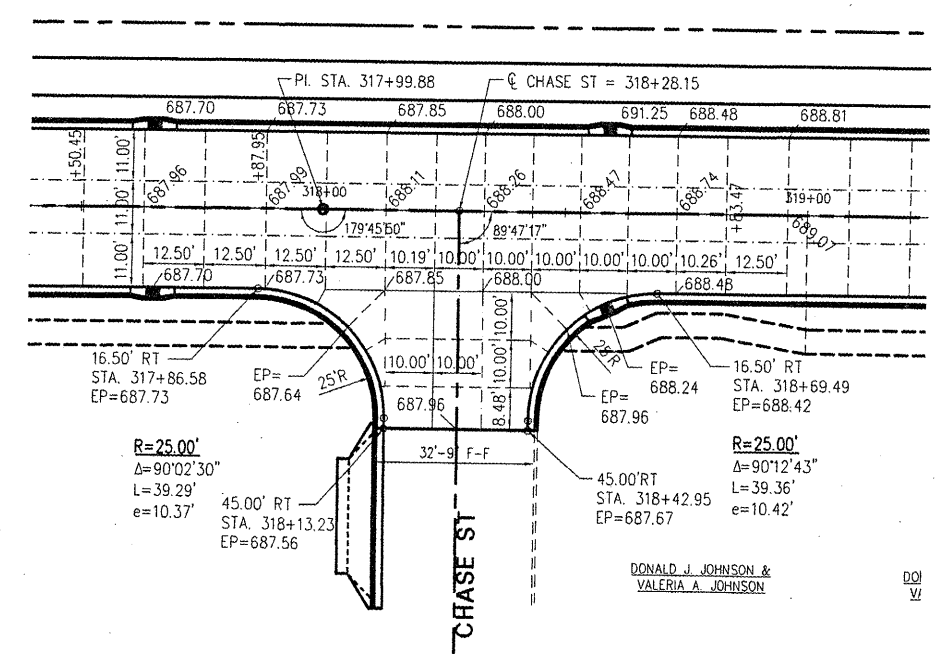
* PLACE 2 EACH #6 BARS, 6'-0" LONG CENTERED ACROSS JOINT PANEL ADJACENT TO END OF SAWED OR CONSTRUCTION JOINT. PLACE BARS WITH 2" CLEAR FROM TOP AND BOTTOM OF PAVEMENT



GRANT ST. INTERSECTION



McDONOUGH ST. INTERSECTION



CHASE ST. INTERSECTION

WARD STREET IMPROVEMENTS INTERSECTION DETAILS
 CITY OF MACOMB
 SOUTH WARD ST.
 FILE NAME: W:\DRAWINGS\MACOMB\WARDST\WARD-ST-2007 FIELD BOOK No. 2257 JOB NUMBER: 02-28-08099

DONALD J. JOHNSON & VALERIA A. JOHNSON
 D/J
 V/J