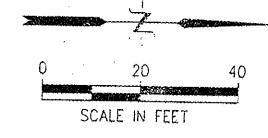


PAVEMENT JOINT LEGEND

- - - - - LONGITUDINAL SAWED JOINT OR LONGITUDINAL CONSTRUCTION JOINT (TIE BARS GROUTED IN PLACE)
- ____ LONGITUDINAL OR TRANSVERSE CONSTRUCTION JOINT (TIE BARS GROUTED IN PLACE)
- - - - - TRANSVERSE CONTRACTION JOINT

CITY OF MACOMB - WARD STREET
 SEC. 06-00139-00-PV F.A.U. 6919
 PROJ. M05040 (009)
 CONTRACT No. 89469 SHT 34 OF 59

SHEET NO.
34
 of **59**



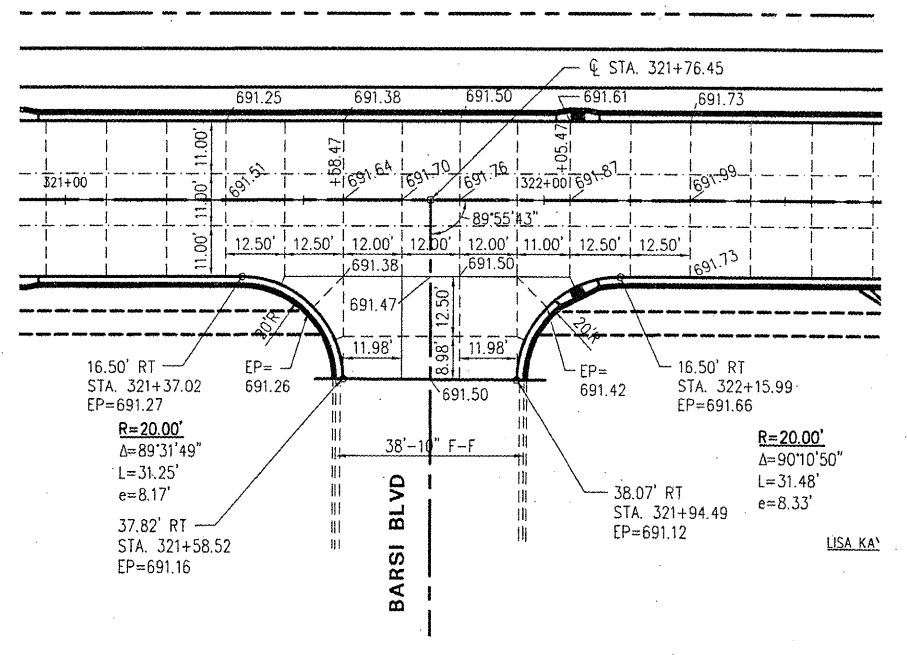
McClure
 Engineering Associates, Inc.
 Macomb, Illinois 61475
 174 East Jackson Street
 Macomb, IL 61454
 (618) 833-6992
 (618) 833-6992
 Design Firm License #008616
 Copyright © 2008 by McClure Engineering Associates, Inc.

PLOTTING SCALE: 1" = 20'
 DRAWN BY: TAB
 CHECKED BY: JAR
 DATE: OCTOBER 2008

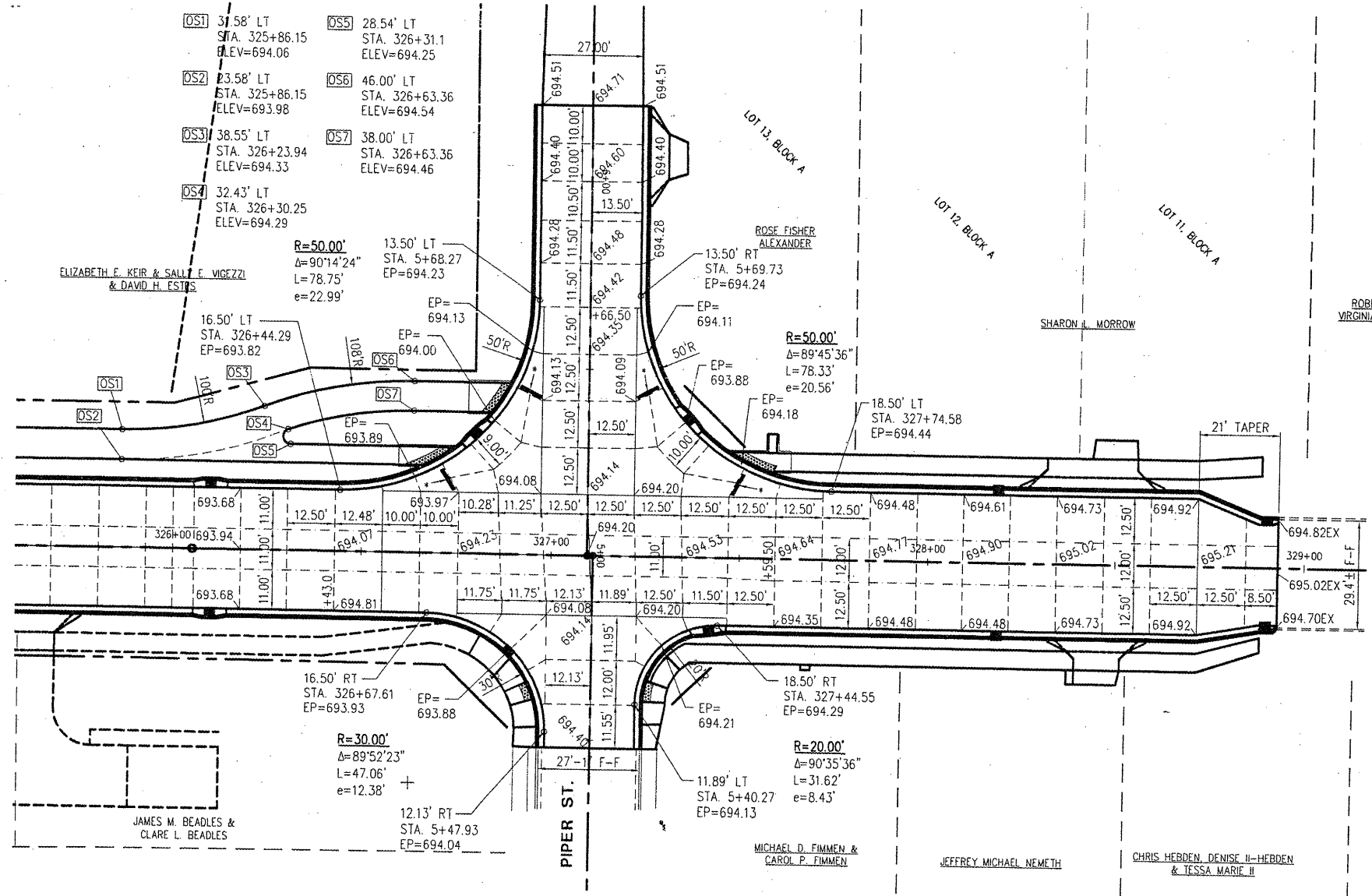
NO.	REVISIONS	DATE

WARD STREET IMPROVEMENTS INTERSECTION DETAILS
 CITY OF MACOMB

ELIZABETH F. KEIR & SALLY F. VIGEZZI
 & DAVID H. ESTES



BARS BLVD. INTERSECTION



PIPER ST. INTERSECTION

* PLACE 2 EACH #6 BARS, 6'-0" LONG
 CENTERED ACROSS JOINT PANEL ADJACENT
 TO END OF SAWED OR CONSTRUCTION JOINT.
 PLACE BARS WITH 2" CLEAR FROM TOP AND
 BOTTOM OF PAVEMENT

SOUTH WARD ST.
 FILE NAME: W:\URBANS\MACOMB\WARDST\WARD-ST-2007
 FIELD BOOK No. 2227 JOB NUMBER: 01-28-0809