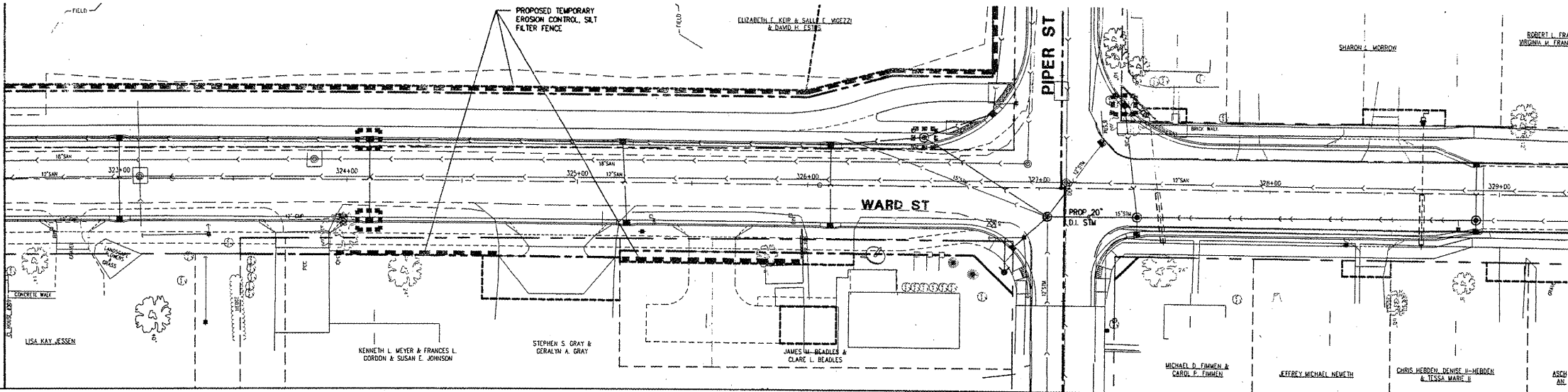


MATCHLINE STA. 322+50



CITY OF MACOMB-WARD STREET
 SEC. 06-00139-00-PV F.A.U. 6919
 PROJ. M05040 (009)
 CONTRACT No. 89469 SHT 39 OF 59

SHEET NO.
39
 OF
59

McClure
 Engineering Associates, Inc.
 Macomb, Illinois 61455
 714 East Jackson Street
 (200) 833-4394
 Design Firm License #184-00816 Copyright 2008 by McClure Engineering Associates, Inc.

GENERAL NOTES

- THE GENERAL CONTRACTOR SHALL IMPLEMENT AND MANAGE THE EROSION AND SEDIMENT CONTROL "BMP'S" BEFORE AND DURING CONSTRUCTION, AND ENSURE THAT THE PLAN WILL BE IMPLEMENTED AND STAY IN EFFECT UNTIL THE CONSTRUCTION PROJECT IS COMPLETE AND THE ENTIRE SITE HAS "FINAL STABILIZATION" APPROVAL.
- ALL EROSION AND "SEDIMENT" CONTROL MEASURES AND OTHER PROTECTIVE MEASURES IDENTIFIED IN THE "SWPPP" MUST BE MAINTAINED IN EFFECTIVE OPERATING CONDITION. IF SITE INSPECTIONS IDENTIFY "BMP'S" THAT ARE NOT OPERATING EFFECTIVELY, MAINTENANCE SHALL BE PERFORMED BEFORE THE NEXT ANTICIPATED STORM EVENT, OR AS NECESSARY TO MAINTAIN THE CONTINUED EFFECTIVENESS OF STORM WATER CONTROLS. IF MAINTENANCE PRIOR TO THE NEXT ANTICIPATED STORM EVENT IS IMPRACTICABLE, MAINTENANCE MUST BE SCHEDULED AND ACCOMPLISHED AS SOON AS POSSIBLE.
- CONTRACTOR SHALL INSPECT THE CONSTRUCTION CONTROL MEASURES AFTER EACH RAIN OF 0.5 INCHES OR MORE AND AT LEAST ONCE EACH WEEK AND MAKE NEEDED REPAIRS. A RECORD OF EACH INSPECTION SHALL BE MADE AND KEPT AT THE PROJECT SITE.
- PREPARATION OF THE STORMWATER POLLUTION PREVENTION PLAN ("SWPPP") MUST BE IN ACCORDANCE WITH THE ILLINOIS ENVIRONMENTAL PROTECTION AGENCY STANDARDS AND SPECIFICATIONS FOR SOIL EROSION AND SEDIMENT CONTROL.
- THE CONTRACTOR SHALL AMEND THE "SWPPP" TO IMPROVE THE CONTROL OF DISCHARGES OF SEDIMENT AND OTHER MATERIALS WHENEVER THE SWPPP FAILS TO REDUCE THE IMPACTS OF POLLUTANTS CARRIED BY CONSTRUCTION SITE STORM WATER RUNOFF.
- IF THE EPA ENFORCEMENT OFFICE NOTIFIES THE PERMITEE THAT CHANGES ARE NEEDED TO THE "SWPPP", THE PERMITEE SHALL AMEND THE "SWPPP" TO IMPROVE THE CONTROL OF THE DISCHARGES OF SEDIMENT AND OTHER MATERIALS. THE PERMITEE SHALL SUBMIT, WITHIN THE DATE SPECIFIED IN THE NOTICE, AN AMENDED "SWPPP".
- THE FOLLOWING PLANS/RECORDS MUST BE MADE AVAILABLE TO FEDERAL, STATE, AND LOCAL OFFICIALS WITHIN 24 HOURS OF REQUEST FOR THE DURATION OF THE PERMIT:
 - STORM WATER POLLUTION PREVENTION PLAN
 - CONSTRUCTION PLAN
 - ALL INSPECTION REPORTS
 - ALL DOCUMENTS PERTINENT TO THE PERMIT
- DAMAGE CLAIMS: THE CONTRACTOR WILL HOLD THE OWNER HARMLESS FROM ANY AND ALL CLAIMS OF ANY TYPE WHATSOEVER RESULTING FROM DAMAGES TO ADJOINING PUBLIC OR PRIVATE PROPERTY, INCLUDING REASONABLE ATTORNEY FEES INCURRED TO OWNER. FURTHER IF THE CONTRACTOR FAILS TO TAKE NECESSARY STEPS TO PROMPTLY REMOVE EARTH SEDIMENTATION OR DEBRIS WHICH COMES ON TO ADJOINING PUBLIC OR PRIVATE PROPERTY, THE OWNER MAY, BUT NEED NOT, REMOVE SUCH ITEMS AND DEDUCT THE COST THEREOF FROM PAYMENTS DUE THE CONTRACTOR.
- UPON FINAL STABILIZATION OF THE DISTURBED AREA, A NOTICE OF DISCONTINUATION MUST BE FILED WITH THE ILLINOIS EPA. ALL PLANS, INSPECTION REPORTS AND OTHER DOCUMENTS MUST BE RETAINED FOR A PERIOD OF THREE YEARS AFTER THE PROJECT COMPLETION, THE CONTRACTOR SHALL RETAIN RECORD COPY AND PROVIDE ORIGINAL DOCUMENTS TO THE OWNER UPON ISSUANCE OF THE NOTICE OF DISCONTINUATION.
- ALL WRITTEN CORRESPONDENCE CONCERNING DISCHARGES FROM THE FACILITY COVERED UNDER THE PROJECT PERMIT SHALL BE DIRECTED TO THE APPROPRIATE STATE EPA OFFICE AT THE ADDRESS:
 ILLINOIS ENVIRONMENTAL PROTECTION AGENCY
 DIVISION OF WATER POLLUTION CONTROL
 ATTN: PERMIT SECTION
 P.O. BOX 19276
 SPRINGFIELD, ILLINOIS, 62794-9276
 A COPY OF THE WRITTEN CORRESPONDENCE MUST ALSO BE SENT TO THE LOCAL GOVERNMENT AGENCY, IF THE DISCHARGE WILL OCCUR, AT THE FOLLOWING ADDRESS:
 OFFICE OF BUILDING AND ZONING C/O CITY HALL
 232 EAST JACKSON ST
 MACOMB, ILLINOIS 61455
- IF THERE IS EVIDENCE INDICATING THAT STORM WATER DISCHARGES AUTHORIZED BY THE PERMIT ARE CONTRIBUTING TO VIOLATIONS OF APPLICABLE WATER QUALITY STANDARDS, THE PERMIT MAY BE MODIFIED BY THE U.S. EPA TO INCLUDE DIFFERENT LIMITATIONS AND/OR REQUIREMENTS.
- NOTHING IN THE PERMIT SHALL BE CONSTRUED TO PRECLUDE THE INSTITUTION OF ANY LEGAL ACTION OR RELIEVE THE PERMITEE FROM ANY RESPONSIBILITIES, LIABILITIES, OR PENALTIES TO WHICH THE PERMITEE IS OR MAY BE SUBJECT UNDER SECTION 311 OF THE CWA OR SECTION 106 OF THE COMPREHENSIVE ENVIRONMENTAL RESPONSE, COMPENSATION AND LIABILITY ACT OF 1980 (CERCLA).
- THE ISSUANCE OF THE PERMIT DOES NOT CONVEY ANY PROPERTY RIGHTS OF ANY SORT, NOR ANY EXCLUSIVE PRIVILEGES, NOR AUTHORIZE ANY INJURY TO PRIVATE PROPERTY NOR ANY INVASION OF PERSONAL RIGHTS, NOR ANY INFRINGEMENT OF FEDERAL, STATE OR LOCAL LAWS OR REGULATIONS.
- THE PERMITEE SHALL AT ALL TIMES PROPERLY OPERATE AND MAINTAIN ALL FACILITIES AND SYSTEMS OF TREATMENT AND CONTROL (AND RELATED APPURTENANCES) WHICH ARE INSTALLED OR USED BY THE PERMITEE TO ACHIEVE COMPLIANCE WITH THE CONDITIONS OF THE PERMIT AND WITH THE REQUIREMENTS OF THE STORM WATER POLLUTION PREVENTION PLANS. PROPER OPERATION AND MAINTENANCE ALSO INCLUDES ADEQUATE LABORATORY CONTROLS AND APPROPRIATE QUALITY ASSURANCE PROCEDURES. PROPER OPERATION AND MAINTENANCE REQUIRES THE OPERATION OF BACKUP OR AUXILIARY FACILITIES OR SIMILAR SYSTEMS INSTALLED BY A PERMIT ONLY WHEN NECESSARY TO ACHIEVE COMPLIANCE WITH THE CONDITIONS OF THE PERMIT.
- THE PERMITEE SHALL ALLOW THE DIRECTOR OR AN AUTHORIZED REPRESENTATIVE OF THE U.S. EPA, THE STATE, OR IN THE CASE OF A CONSTRUCTION SITE WHICH DISCHARGES THROUGH A MUNICIPAL SEPARATE STORM SEWER, AN AUTHORIZED REPRESENTATIVE OF THE MUNICIPAL OWNER/OPERATOR OF THE SEPARATE STORM SEWER RECEIVING THE DISCHARGE, UPON THE PRESENTATION OF CREDENTIALS AND OTHER DOCUMENTS AS MAY BE REQUIRED BY LAW, TO:
 - ENTER UPON THE PERMITEE'S PREMISES WHERE A REGULATED FACILITY OR ACTIVITY IS LOCATED OR CONDUCTED OR WHERE RECORDS MUST BE KEPT UNDER THE CONDITIONS OF THE PERMIT.
 - HAVE ACCESS TO AND COPY AT REASONABLE TIMES, ANY RECORDS THAT MUST BE KEPT UNDER THE CONDITIONS OF THE PERMIT.
 - INSPECT AT REASONABLE TIMES ANY FACILITIES OR EQUIPMENT (INCLUDING MONITORING AND CONTROL EQUIPMENT).

DEFINITIONS

"BEST MANAGEMENT PRACTICES (BMP)" MEANS SCHEDULES OF ACTIVITIES, PROHIBITIONS, OF PRACTICES, MAINTENANCE PROCEDURES, AND OTHER MANAGEMENT PRACTICES TO PREVENT OR REDUCE THE DISCHARGE OF POLLUTANTS TO WATERS OF THE UNITED STATES. BMP'S ALSO INCLUDE TREATMENT REQUIREMENTS, OPERATING PROCEDURES, AND PRACTICE TO CONTROL SITE RUNOFF, SPILLAGE OR LEAKS, SLUDGE OR WASTE DISPOSAL, OR DRAINAGE FROM RAW MATERIAL STORAGE.

"COMMENCEMENT OF CONSTRUCTION ACTIVITIES" MEANS THE INITIAL DISTURBANCE OF SOILS ASSOCIATED WITH CLEARING, GRADING, OR EXCAVATING ACTIVITIES OR OTHER CONSTRUCTION ACTIVITIES.

"CWA" MEANS THE CLEAN WATER ACT OR THE FEDERAL WATER POLLUTION CONTROL ACT, 33 U.S.C. SECTION 1251 ET SEQ.

"DIRECTOR" MEANS THE REGIONAL ADMINISTRATOR OF THE UNITED STATES ENVIRONMENTAL PROTECTION AGENCY OR AN AUTHORIZED REPRESENTATIVE.

"DISCHARGE OF STORM WATER ASSOCIATED WITH CONSTRUCTION ACTIVITY" REFERS TO A DISCHARGE OF POLLUTANTS IN STORM WATER RUNOFF FROM AREAS WHERE SOIL DISTURBING ACTIVITIES (E.G., CLEARING, GRADING, OR EXCAVATING).

"EXPOSED SOIL AREAS" REFERS TO ALL AREAS OF THE CONSTRUCTION SITE WHERE THE PERENNIAL VEGETATION (INCLUDING TREES, SHRUBS, AND BRUSH) HAS BEEN REMOVED.

"FINAL STABILIZATION" REQUIRES EITHER:
 ALL SOIL DISTURBING ACTIVITIES AT THE SITE HAVE BEEN COMPLETED AND A UNIFORM (E.G., EVENLY DISTRIBUTED, WITHOUT LARGE BARE AREAS) PERENNIAL VEGETATIVE COVER WITH A DENSITY OF 70% OF THE NATIVE BACKGROUND VEGETATIVE COVER FOR THE AREA HAS BEEN ESTABLISHED ON ALL UNPAVED AREAS AND AREAS NOT COVERED BY PERMANENT STRUCTURES, OR EQUIVALENT PERMANENT STABILIZATION MEASURES (SUCH AS, THE USE OF RIPRAP, GABIONS, OR GEOTEXTILES) HAVE BEEN EMPLOYED. IN SUCH PARTS OF THE COUNTRY, BACKGROUND NATIVE VEGETATION WILL COVER LESS THAN 100% OF THE GROUND (E.G., ARID AREAS, BEACHES). ESTABLISHING AT LEAST 70% OF THE NATURAL COVER OF THE NATIVE VEGETATION MEETS THE VEGETATIVE COVER CRITERIA FOR FINAL STABILIZATION (E.G., IF THE NATIVE VEGETATION COVERS 50% OF THE GROUND, 70% OF 50% WOULD REQUIRE 35% TOTAL COVER FOR FINAL STABILIZATION.

FOR CONSTRUCTION PROJECTS ON LAND USED FOR AGRICULTURAL PURPOSES (E.G., PIPELINES ACROSS CROP LAND), FINAL STABILIZATION MAY BE ACCOMPLISHED BY RETURNING THE DISTURBED LAND TO ITS PRECONSTRUCTION AGRICULTURAL USE. AREAS DISTURBED THAT WERE NOT PREVIOUSLY USED FOR AGRICULTURAL ACTIVITIES, SUCH AS BUFFER STRIPS IMMEDIATELY ADJACENT TO "WATER OF THE UNITED STATES," AND AREAS WHICH ARE NOT BEING RETURNED TO THEIR PRECONSTRUCTION AGRICULTURAL USE MUST MEET THE FINAL STABILIZATION CRITERIA ABOVE.

"IMPERVIOUS SURFACE" MEANS A CONSTRUCTED HARD SURFACE THAT EITHER PREVENTS OR RETARDS THE ENTRY OF WATER INTO THE SOIL AND CAUSES WATER TO RUN OFF THE SURFACE IN GREATER QUANTITIES AND AT AN INCREASED RATE OF FLOW THAN PRIOR TO DEVELOPMENT. EXAMPLES INCLUDE ROOFTOPS, SIDEWALKS, PATIOS, DRIVEWAYS, PARKING LOTS, STORAGE AREAS, AND CONCRETE, ASPHALT OR GRAVEL ROADS.

"PERMANENT STABILIZATION" REFERS TO THE ESTABLISHMENT OF PERMANENT VEGETATIVE OR NON-VEGETATIVE COVER.

"POLLUTANT" IS DEFINED IN THE CODE OF FEDERAL REGULATIONS AT 40 C.F.R. 122.2. A PARTIAL LISTING FROM THIS DEFINITION INCLUDES: DREDGED SPOIL, SOLID WASTE, SEWAGE, GARBAGE, SEWAGE SLUDGE, CHEMICAL WASTES, BIOLOGICAL MATERIALS, HEAT WRECKED OR DISCARDED EQUIPMENT, ROCK, SAND, CELLAR DIRT, AND INDUSTRIAL OR MUNICIPAL WASTE.

"SEDIMENT" MEANS THE PRODUCT OF AN EROSION PROCESS; SOLID MATERIAL BOTH MINERAL AND ORGANIC, THAT IS IN SUSPENSION, IS BEING TRANSPORTED, OR HAS BEEN MOVED BY WATER, AIR OR ICE, AND HAS COME TO REST ON THE EARTH'S SURFACE EITHER ABOVE OR BELOW WATER LEVEL.

"STORM WATER" REFERS TO STORM WATER RUNOFF, SNOW MELT RUNOFF, AND SURFACE RUNOFF AND DRAINAGE.

"TEMPORARY STABILIZATION" MEANS THE ESTABLISHMENT OF TEMPORARY VEGETATIVE COVER AS AN INTERIM MEASURE TO PREVENT EROSION DURING THE PERIOD BEFORE PERMANENT STABILIZATION CAN BE ACCOMPLISHED, OR DURING PERIODS PRIOR TO FINAL GRADING.

EROSION CONTROLS SCHEDULE

- IN AN EFFORT TO LIMIT SOIL EROSION AND STORM WATER POLLUTANTS FROM DISCHARGING TO PUBLIC WATERS, THE FOLLOWING ITEMS OF GRADING ACTIVITY AND TEMPORARY SEDIMENT CONTROL MEASURES ARE REQUIRED:
- PRIOR TO THE "COMMENCEMENT OF CONSTRUCTION", "BMP'S" SHALL BE IN PLACE TO EFFECTIVELY PREVENT OR REDUCE THE "DISCHARGE OF STORM WATER ASSOCIATED WITH CONSTRUCTION ACTIVITY" IN AN EFFORT TO REMOVE "SEDIMENTS" OR "POLLUTANTS" FROM "STORM WATER" WITH THE FOLLOWING MEANS:
 - ALL "EXPOSED SOIL AREAS" LEFT INACTIVE FOR 14 OR MORE DAYS SHALL BE "TEMPORARILY STABILIZED" BY SEEDING, SODDING, MULCHING, COVERING, OR OTHER APPROVED METHOD. SEEDING AND SODDING MAY ONLY BE USED FROM MAY 1 TO SEPTEMBER 15 OF ANY YEAR.
 - SILT FENCE AND HAY BALES ARE TEMPORARY EROSION CONTROL ITEMS. SLOPE REINFORCEMENT MAT SHALL BE CONSIDERED A PERMANENT EROSION CONTROL ITEM. TEMPORARY EROSION CONTROL ITEMS SHALL BE REMOVED BY THE CONTRACTOR AT THE END OF CONSTRUCTION.
 - ALL TOPSOIL, EXCAVATED MATERIAL, SILT, AND TEMPORARY EROSION CONTROL ITEMS REMOVED FROM THE SITE SHALL BECOME THE PROPERTY OF THE CONTRACTOR TO BE DISPOSED OF APPROPRIATELY.
 - ALL UNPAVED AREAS DISTURBED BY GRADING SHALL RECEIVE "FINAL STABILIZATION" TO THE SPECIFICATIONS. ACCEPTANCE AND GUARANTEE SHALL BE PER SPECIFICATIONS.
 - REPAIR ANY SILTATION OR EROSION DAMAGE TO ADJOINING SURFACES AND DRAINAGE WAYS RESULTING FROM CONSTRUCTION.
 - EROSION CONTROL SYSTEM TO BE MAINTAINED BY CONTRACTOR THROUGH THE COURSE OF THE PROJECT AND SHALL BE MODIFIED AND RELOCATED AS CONSTRUCTION OPERATIONS REQUIRE.
 - UPON COMPLETION OF CONSTRUCTION OPERATIONS THE CONTRACTOR SHALL CLEAN STORM SEWER SYSTEM AND PIPE CULVERTS OF DEBRIS AND SILT.
 - CONSTRUCT SEEDING AND MULCH ON ALL INTERIOR SLOPES WITHIN DETENTION BASINS, EXCEPT BELOW WATER LEVEL IN NORTH BASIN.
 - PLACE INLET PROTECTION AROUND ALL CURB INLETS.
 - FOR AS LONG AS POSSIBLE DURING CONSTRUCTION, THE CONTRACTOR MAY UTILIZE THE EXISTING DRY DAMS AND TILE INLETS TO AID IN THE MITIGATION OF SITE EROSION.

PLOTTING SCALE: 1" = 30'

DRAWN BY: JAR

CHECKED BY: JAR

DATE: OCTOBER 2008

NO.	REVISIONS	ITEM	DATE

**WARD STREET IMPROVEMENTS
 STORM WATER POLLUTION PREVENTION PLAN AND NOTES**
 CITY OF MACOMB
 SOUTH WARD ST.
 FILE NAME: W:\DRAWINGS\MACOMB\WARDST\WARD-ST-2007
 FIELD BOOK No. 2257 JOB NUMBER: 02-26-0808
 MACOMB, ILLINOIS