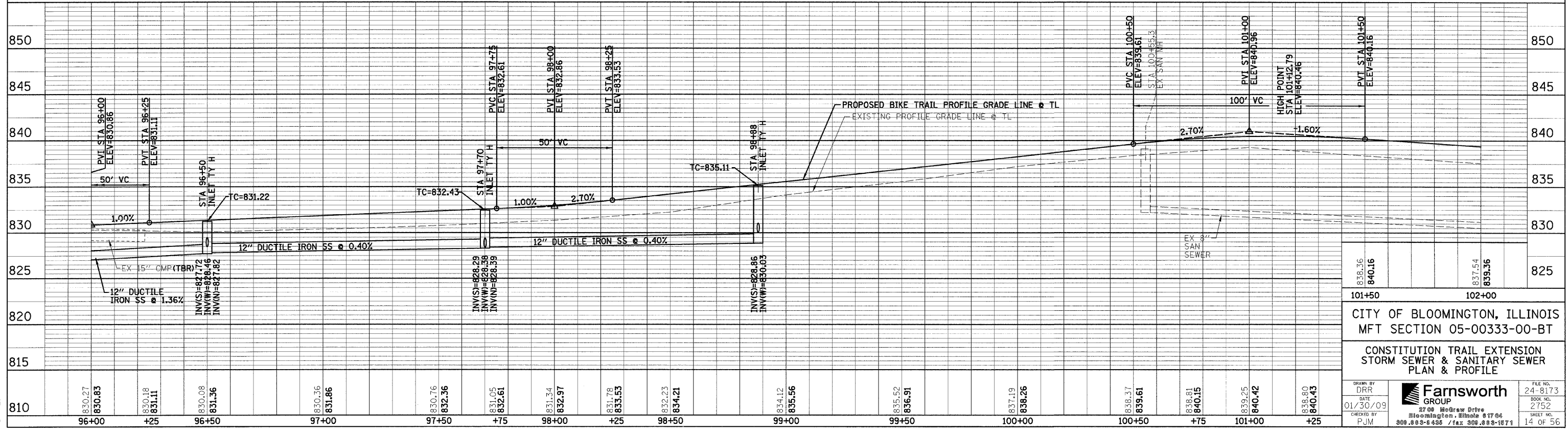
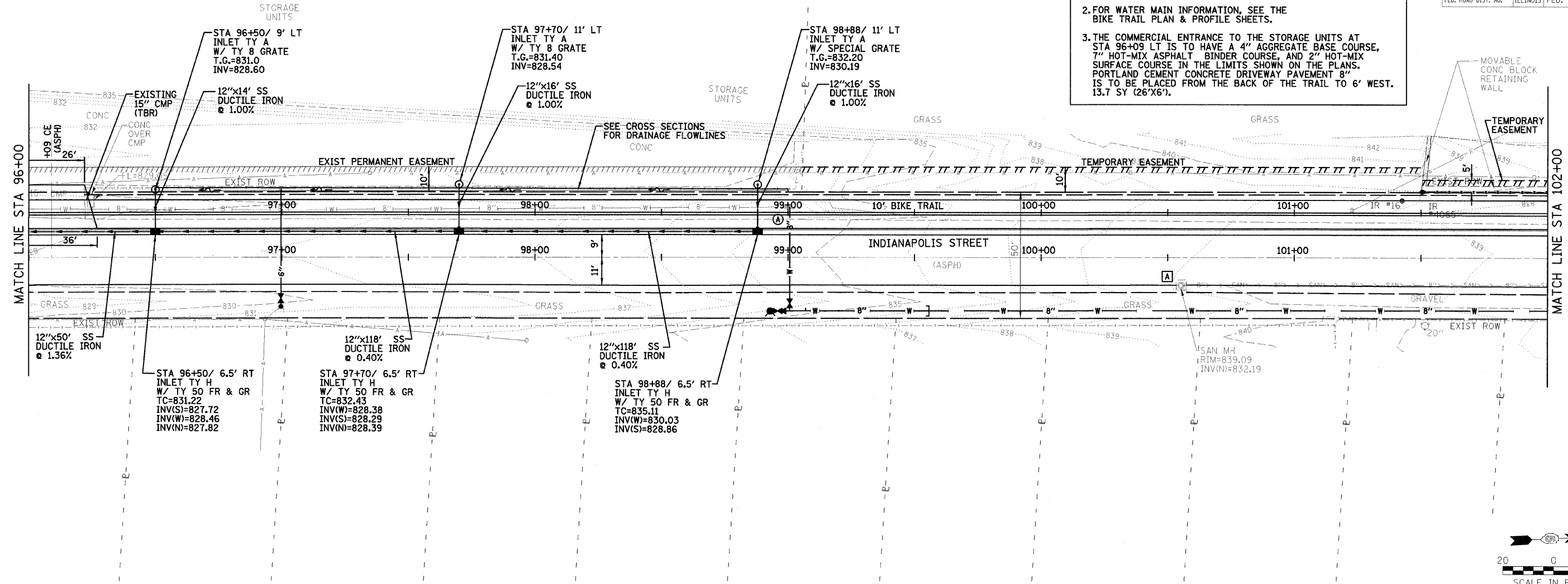


F.A. RTE.	SECTION	COUNTY	TOTAL SHEETS	SHEET NO.
	05-00333-00-BT	McLEAN	56	14
STA. 96+00		TO STA. 102+00		
FED. ROAD DIST. NO.	ILLINOIS	FED. AID PROJECT		

**NOTES:**  
 1. ALL STATIONING AND OFFSETS ARE BASED UPON THE BIKE TRAIL TRANSIT LINE.  
 2. FOR WATER MAIN INFORMATION, SEE THE BIKE TRAIL PLAN & PROFILE SHEETS.  
 3. THE COMMERCIAL ENTRANCE TO THE STORAGE UNITS AT STA 96+09 LT IS TO HAVE A 4" AGGREGATE BASE COURSE, 7" HOT-MIX ASPHALT BINDER COURSE, AND 2" HOT-MIX SURFACE COURSE IN THE LIMITS SHOWN ON THE PLANS. PORTLAND CEMENT CONCRETE DRIVEWAY PAVEMENT 8" IS TO BE PLACED FROM THE BACK OF THE TRAIL TO 6' WEST. 13.7 SY (26'X6').



838.36	840.16	837.54	839.36
101+50		102+00	
CITY OF BLOOMINGTON, ILLINOIS MFT SECTION 05-00333-00-BT			
CONSTITUTION TRAIL EXTENSION STORM SEWER & SANITARY SEWER PLAN & PROFILE			
830.27	830.83	830.18	831.11
830.08	831.36	830.36	831.86
830.76	832.36	831.05	832.61
831.34	832.97	831.78	833.53
832.23	834.21	834.12	835.56
835.52	836.91	837.19	838.26
838.37	839.61	838.81	840.15
839.25	840.42	838.80	840.43

DRAWN BY: DRR  
 DATE: 01/30/09  
 CHECKED BY: PJM  
**Farnsworth GROUP**  
 2700 McGraw Drive  
 Bloomington, Illinois 61704  
 888.888.8455 / Fax 888.888.8871  
 FILE NO.: 24-8173  
 BOOK NO.: 2752  
 SHEET NO.: 14 OF 56

FILE: DATE: