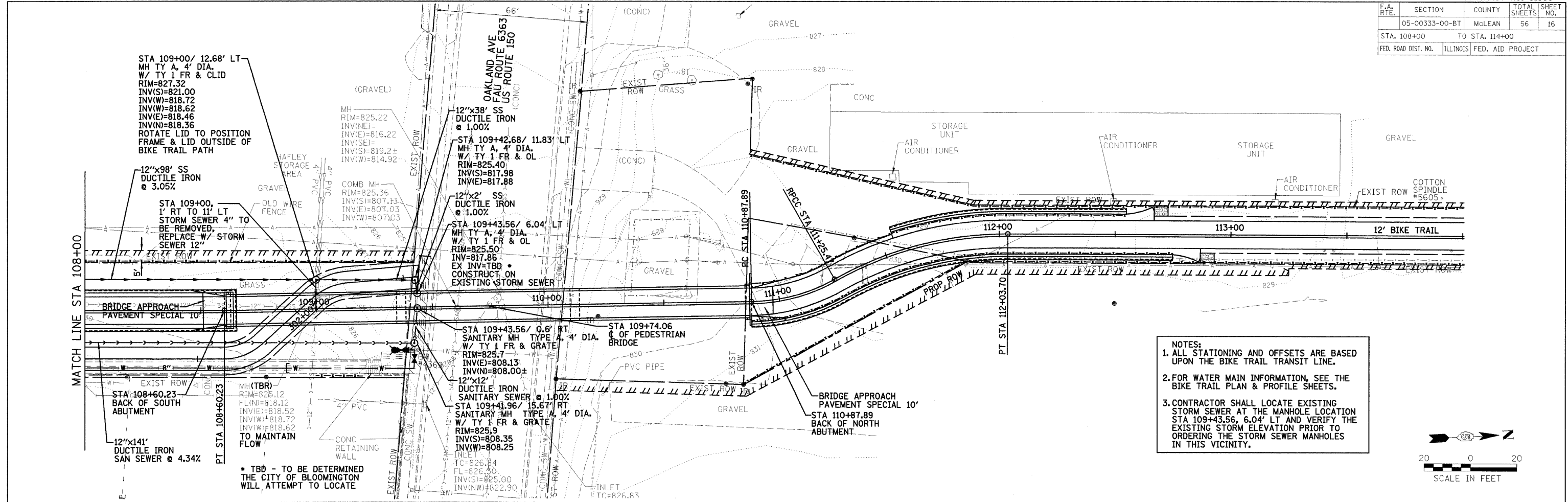
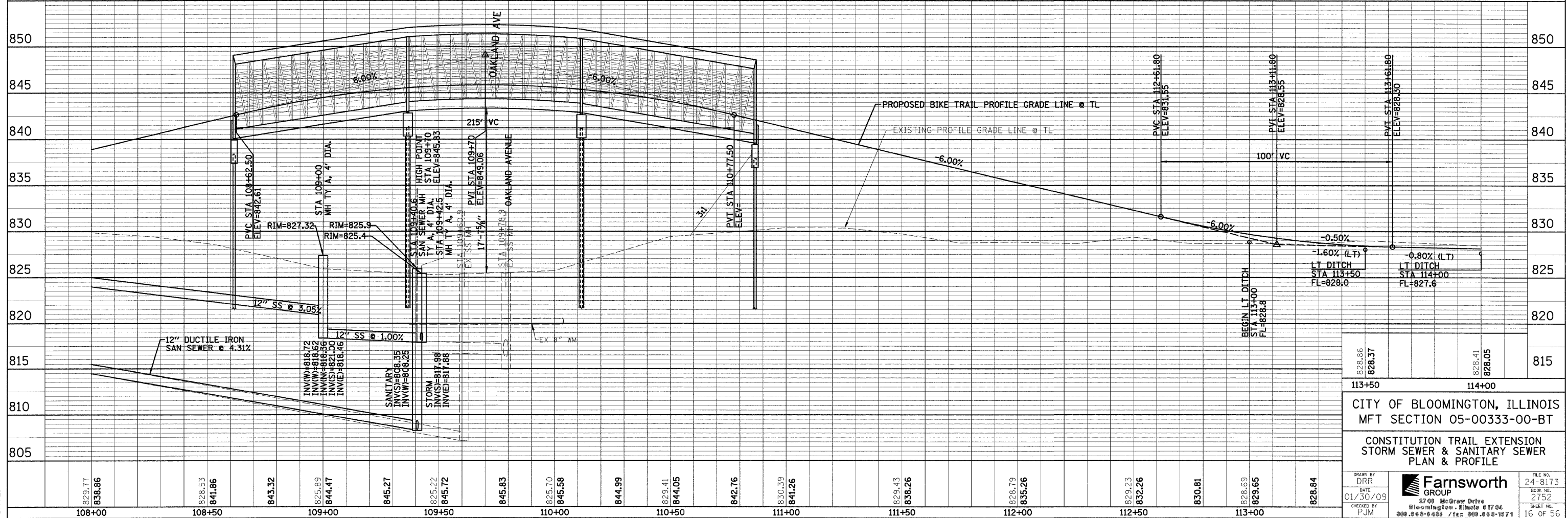


F.A. RTE.	SECTION	COUNTY	TOTAL SHEETS	SHEET NO.
05-00333-00-BT	McLEAN	56	16	
STA. 108+00		TO STA. 114+00		
FED. ROAD DIST. NO.	ILLINOIS	FED. AID PROJECT		



NOTES:

1. ALL STATIONING AND OFFSETS ARE BASED UPON THE BIKE TRAIL TRANSIT LINE.
2. FOR WATER MAIN INFORMATION, SEE THE BIKE TRAIL PLAN & PROFILE SHEETS.
3. CONTRACTOR SHALL LOCATE EXISTING STORM SEWER AT THE MANHOLE LOCATION STA 109+43.56, 6.04' LT AND VERIFY THE EXISTING STORM SEWER ELEVATION PRIOR TO ORDERING THE STORM SEWER MANHOLES IN THIS VICINITY.



828.86	838.37	828.41	828.05
113+50		114+00	
CITY OF BLOOMINGTON, ILLINOIS			
MFT SECTION 05-00333-00-BT			
CONSTITUTION TRAIL EXTENSION			
STORM SEWER & SANITARY SEWER			
PLAN & PROFILE			
DRN BY	DRR	FILE NO.	24-8173
DATE	01/30/09	BOOK NO.	2752
CHECKED BY	PJM	SHEET NO.	16 OF 56
Farnsworth GROUP 2700 McGraw Drive Bloomington, Illinois 61704 309.888-8438 / fax 309.888-1971			

FILE: DATE: