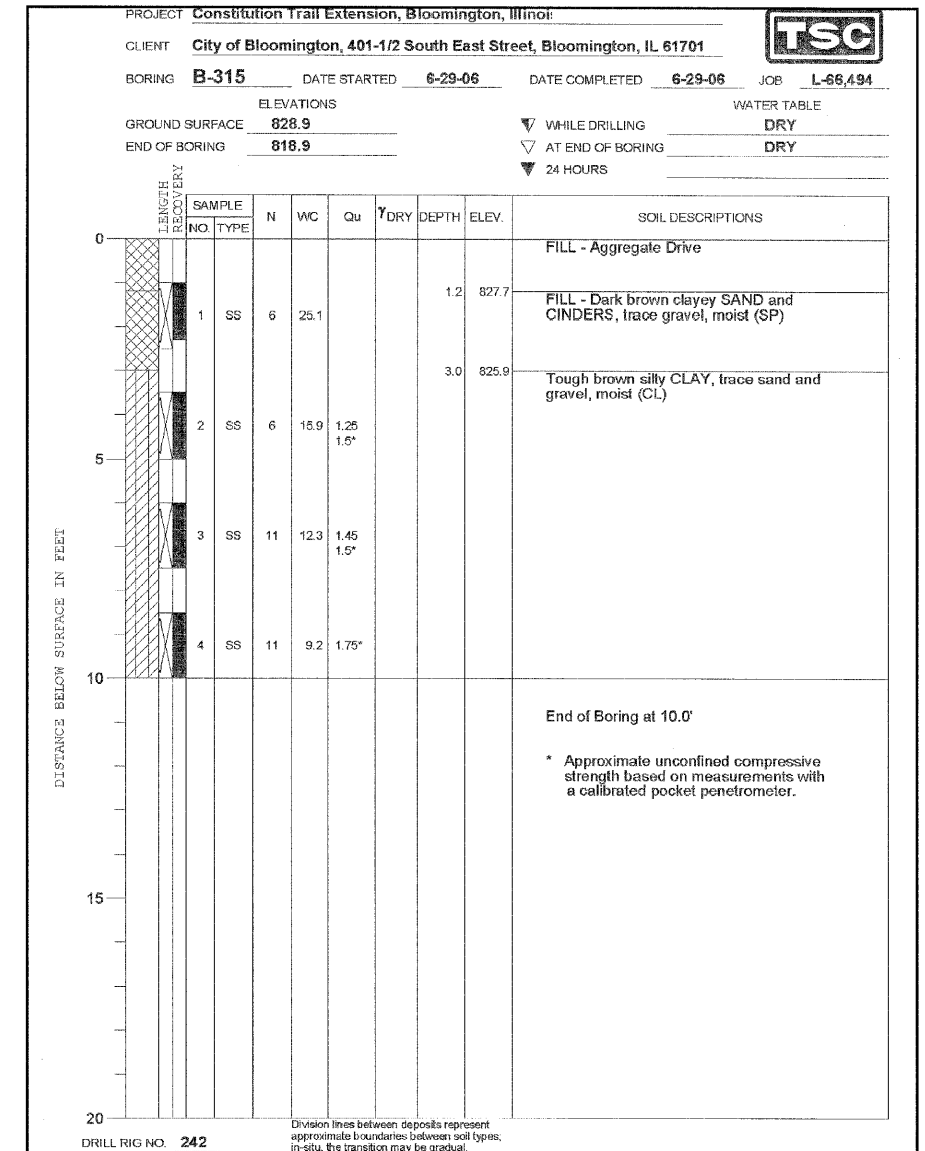
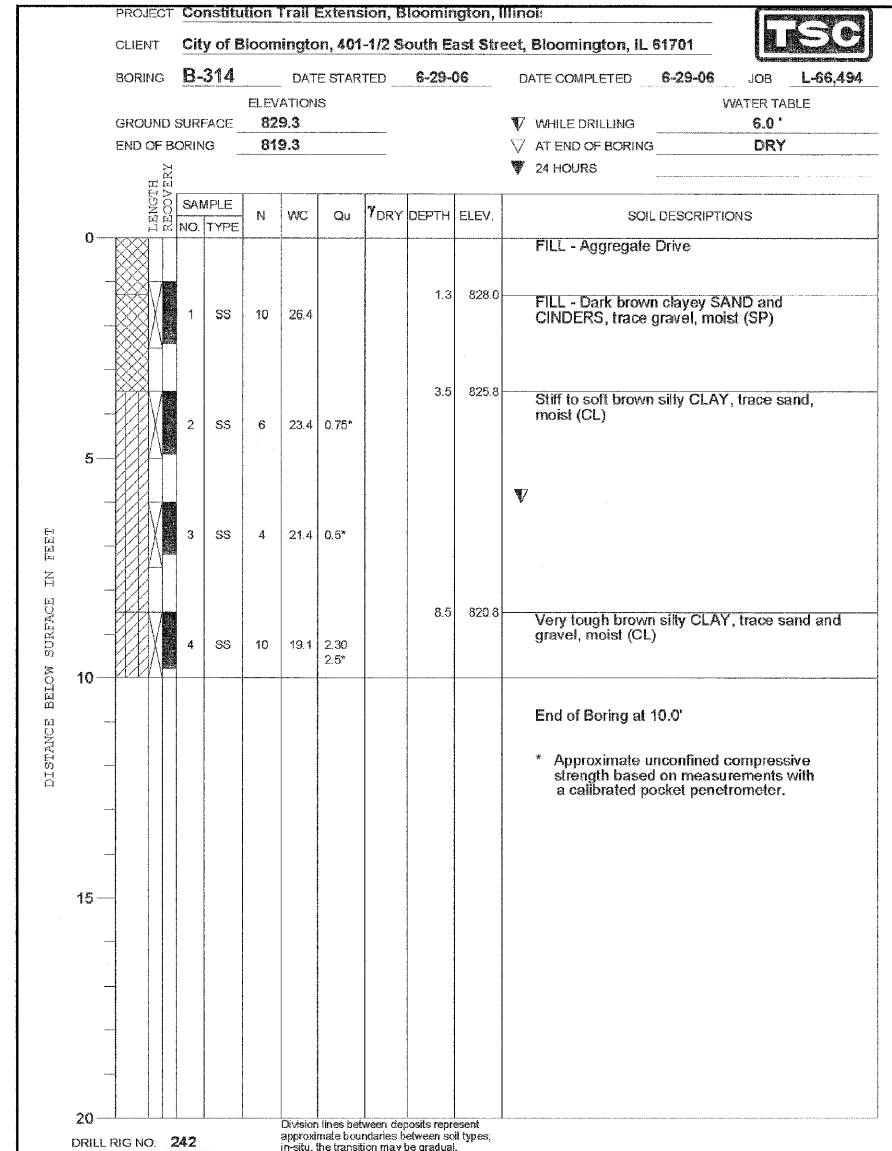
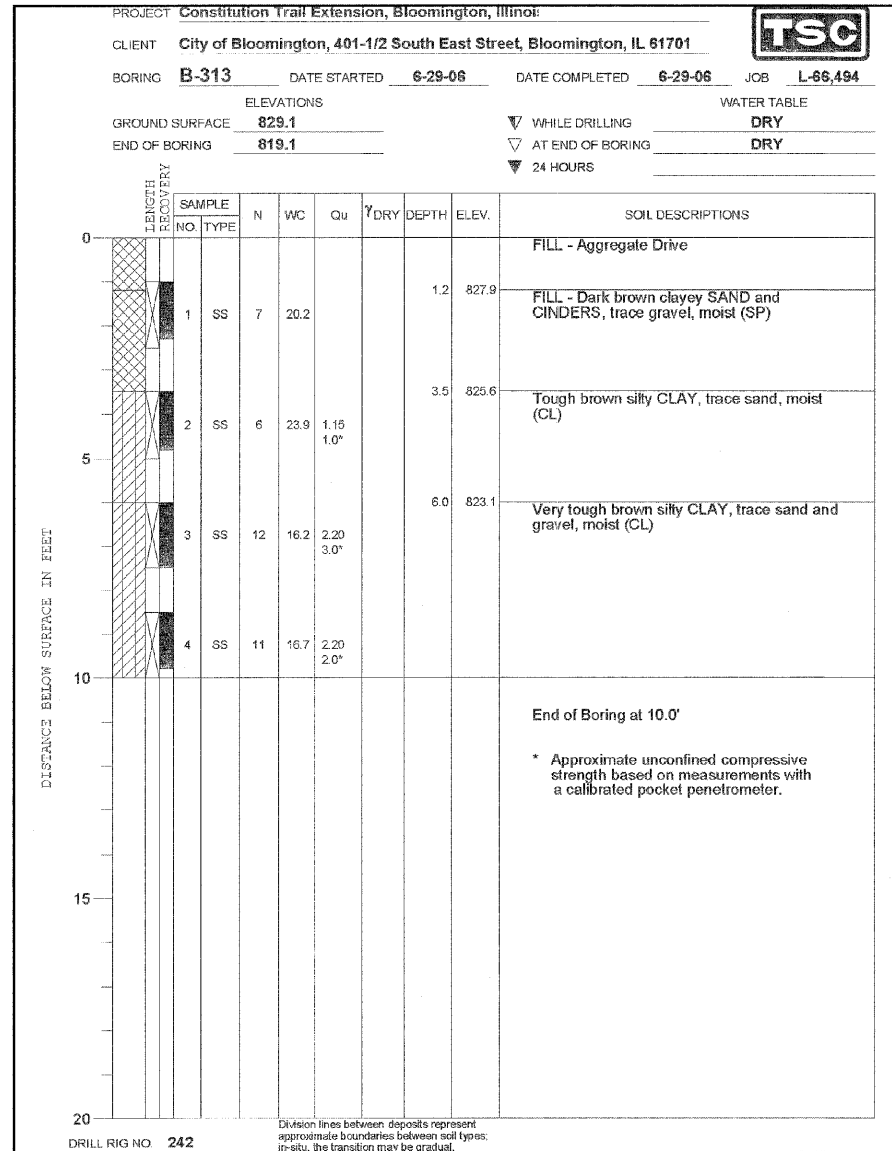


F.A. RTE.	SECTION	COUNTY	TOTAL SHEETS	SHEET NO.
	05-00333-00-BT	McLEAN	56	34
STA.	TO STA.			
FED. ROAD DIST. NO.	ILLINOIS	FED. AID PROJECT		



CITY OF BLOOMINGTON, ILLINOIS
SECTION 05-00333-00-BT

RETAINING WALL BORING LOGS

DRAWN BY DJM/JTC	<p>2709 McGraw Drive Bloomington, Illinois 61704 809/888-6688, 800/888-1671 fax</p>	FILE NO. 24-8173
DATE 01/30/09		BOOK NO. 2752
CHECKED BY MSW		SHEET NO. 34 OF 56