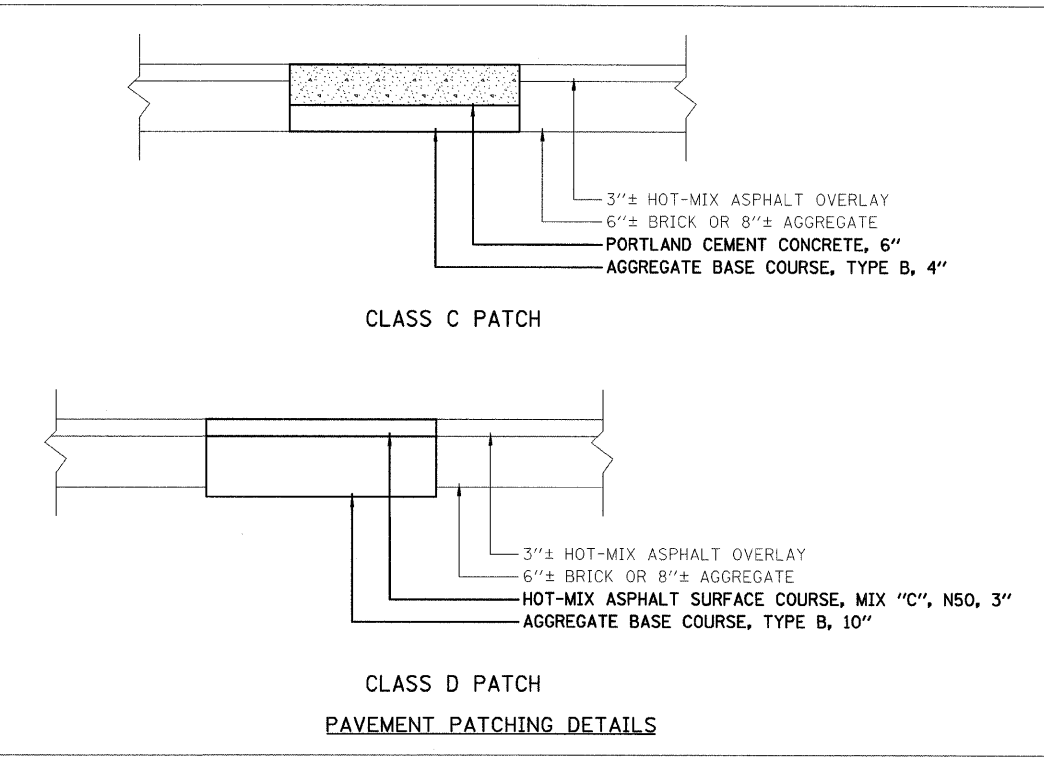
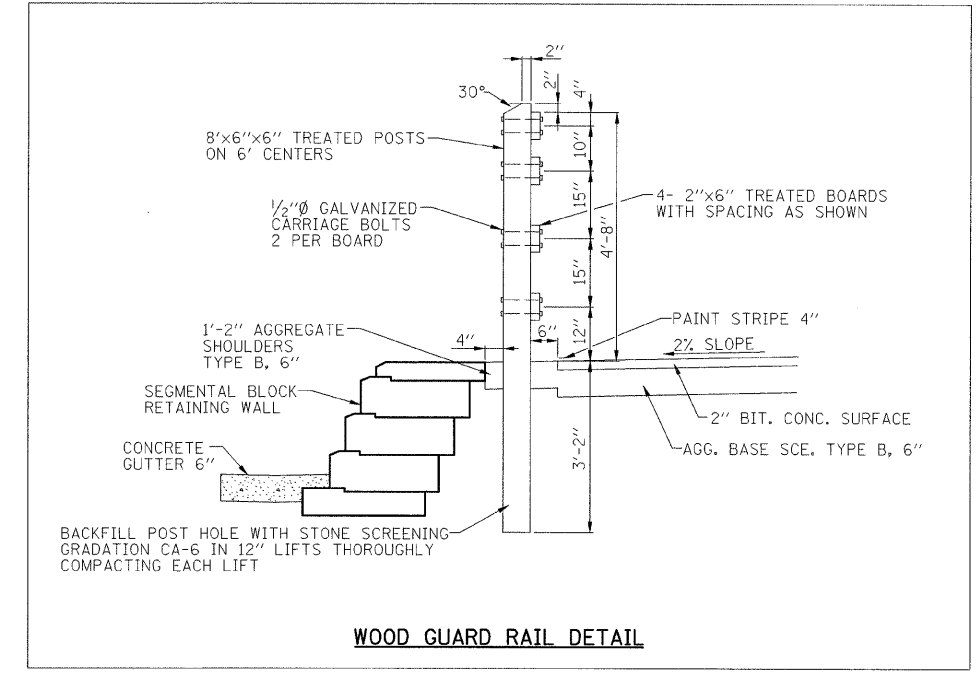
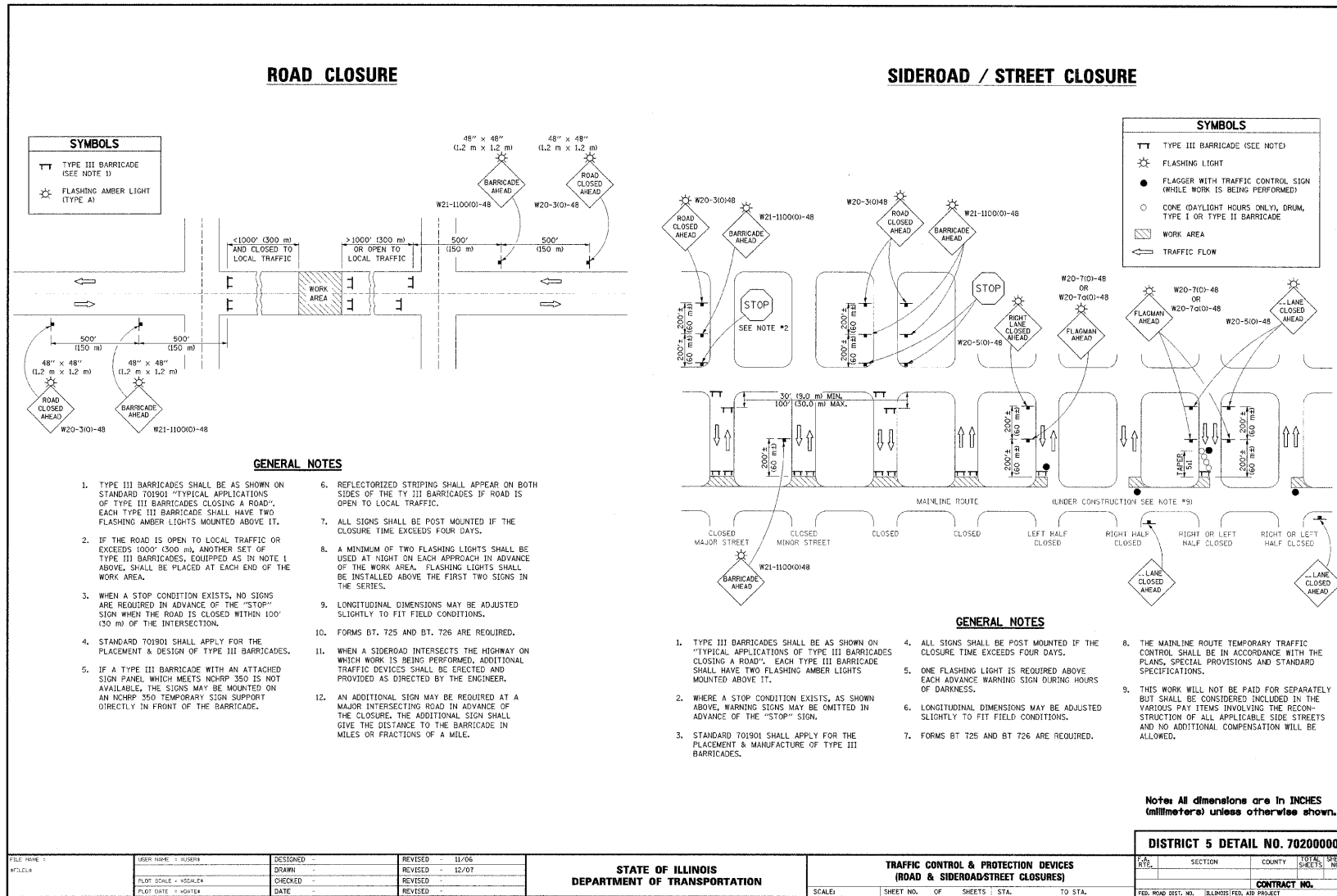


F.A.U. RTE.	SECTION	COUNTY	TOTAL SHEETS	SHEET NO.
05-00333-00-BT	McLEAN	56	38	
STA.		TO STA.		
FED. ROAD DIST. NO.	ILLINOIS	FED. AID PROJECT		



FILE NAME: W21110001-48	DESIGNED: -	REVISION: - 11/06	STATE OF ILLINOIS DEPARTMENT OF TRANSPORTATION	TRAFFIC CONTROL & PROTECTION DEVICES (ROAD & SIDEROAD/STREET CLOSURES)	DISTRICT 5 DETAIL NO. 70200000
USER NAME: RUSSEN	DRAWN: -	REVISION: - 12/01			
PLT SCALE: 1/8"=1'-0"	CHECKED: -	REVISION: -	SCALE: SHEET NO. OF SHEETS STA. TO STA.		
PLT DATE: 1/20/14	DATE: -	REVISION: -	FED. ROAD DIST. NO. ILLINOIS FED. AID PROJECT		

CITY OF BLOOMINGTON, ILLINOIS
MFT SECTION 05-00333-00-BT

MISCELLANEOUS DETAILS

DRAWN BY DRR	Farnsworth GROUP 2706 Midway Drive Bloomington, Illinois 61704 309/663-6436 309/663-1871 fax	FILE NO. 24-8173
DATE 01/30/09		SHEET NO. 2752
DRAWN BY PJM		SHEET NO. 38 OF 56

REVISED 03/05/09 DRR

D:\City of Bloomington\2008\200803050033300-BT_Coordinating\T240204.rvt