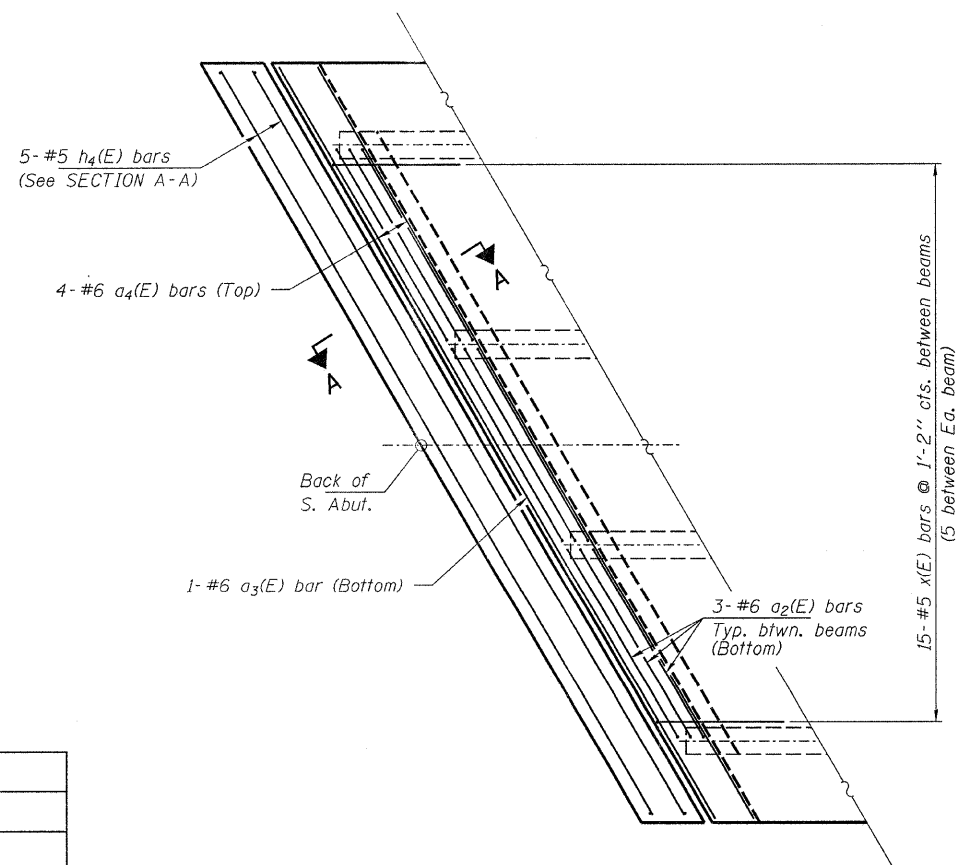
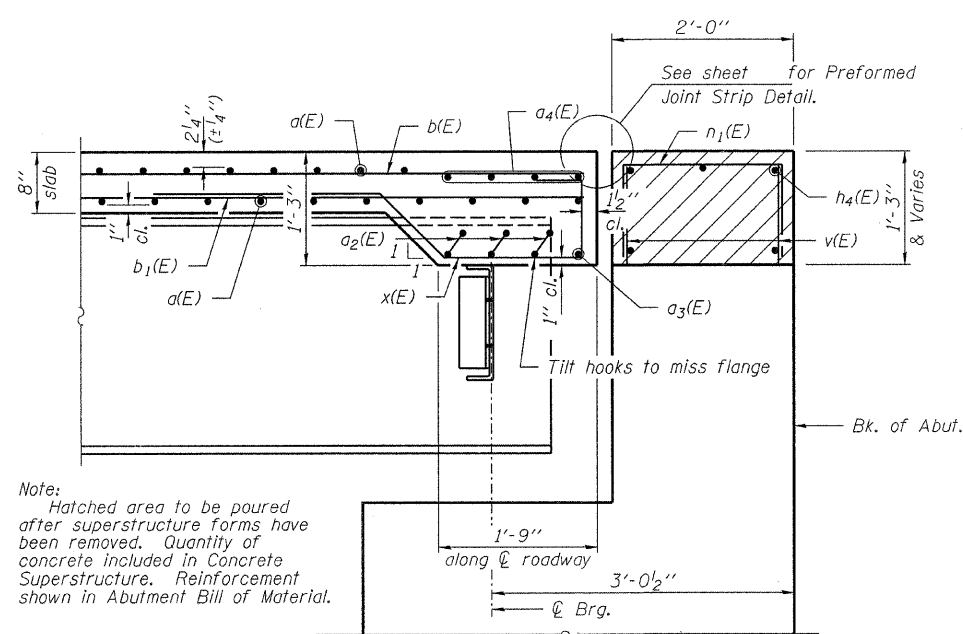


*Order a(E) bars full length. Cut to fit skew and use remainder of bars in opposite end of deck.

PARTIAL PLAN



END PLAN
(South end of deck shown, North end similar)



Note:
Hatched area to be poured after superstructure forms have been removed. Quantity of concrete included in Concrete Superstructure. Reinforcement shown in Abutment Bill of Material.

MINIMUM BAR LAP

#5 bar = 1'-8"
#6 bar = 2'-7"

Notes:
See Sheet 20 for superstructure details and Bill of Material.
Bars indicated thus 24x17-#5 etc. indicates 24 lines of bars with 17 lengths per line.

SECTION A-A

(Horizontal dimensions measured @ Rt. L's)

**SUPERSTRUCTURE
STRUCTURE NO. 074-3296**

DESIGNED - M.D.C.
CHECKED - S.M.S.
DRAWN - D.A.B.
CHECKED - M.G.B.

HAMPTON, LENZINI & RENWICK, INC.
CIVIL & STRUCTURAL ENGINEERS
LAND SURVEYORS

HLR 3085 STEVENSON DRIVE, SUITE 201
SPRINGFIELD, ILLINOIS 62703
(217) 546-3400

PROJECT NUMBER: 12-75-0001-1 DATE: 12/22/08

T.R.	SECTION	COUNTY	TOTAL SHEETS	SHEET NO.
154	03-06130-00-BR	PIATT	57	19
SANGAMON ROAD DISTRICT		CONTRACT NO. 91385		
FED. ROAD DIST. NO.		ILLINOIS FED. AID PROJECT		