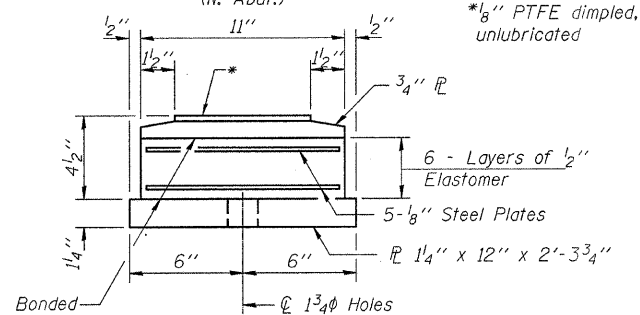
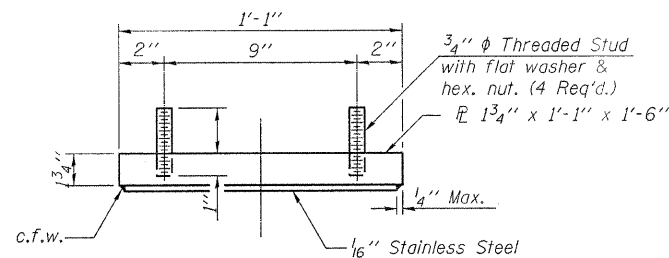


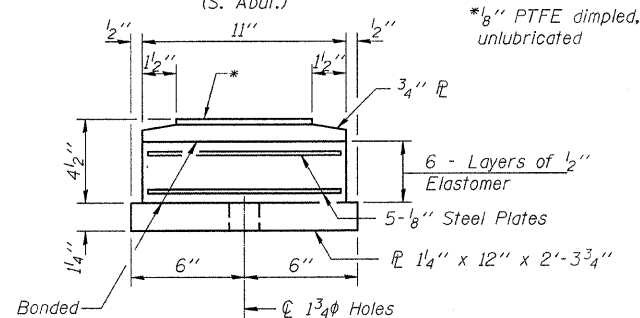
**TOP BEARING ASSEMBLY**  
(N. Abut.)



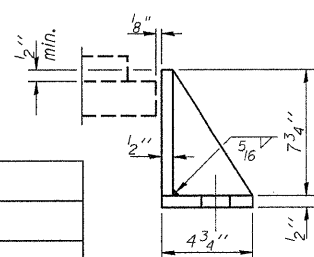
**BOTTOM BEARING ASSEMBLY**  
(N. Abut.)



**TOP BEARING ASSEMBLY**  
(S. Abut.)

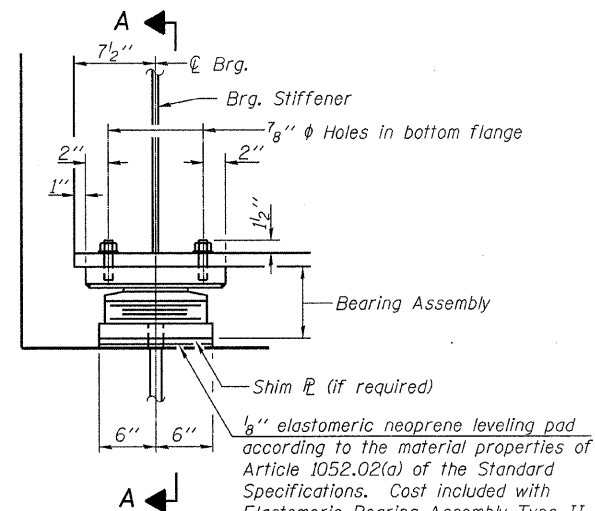


**BOTTOM BEARING ASSEMBLY**  
(S. Abut.)



**SIDE RETAINER**  
(Both Abutments)

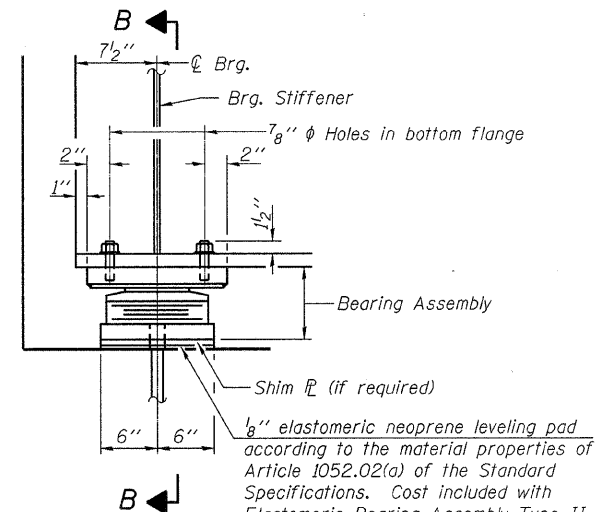
Equivalent rolled angle with stiffeners will be allowed in lieu of welded plates.



**ELEVATION AT NORTH ABUT.**

**TYPE II ELASTOMERIC EXP. BRG.**

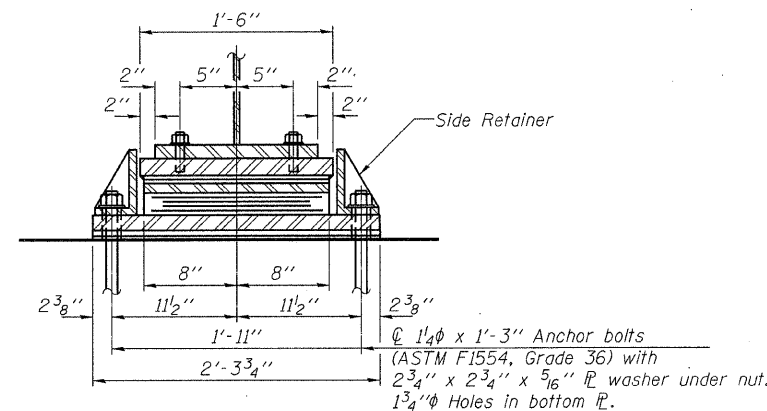
(North Abutment - 4 required)



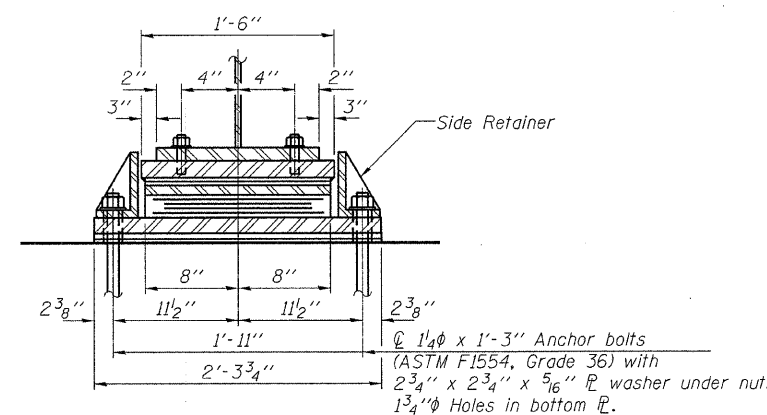
**ELEVATION AT SOUTH ABUT.**

**TYPE II ELASTOMERIC EXP. BRG.**

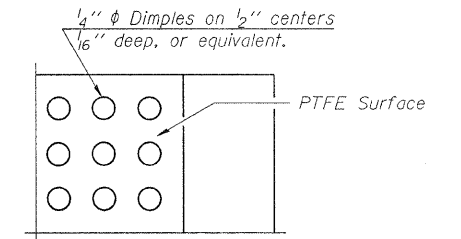
(South Abutment - 4 required)



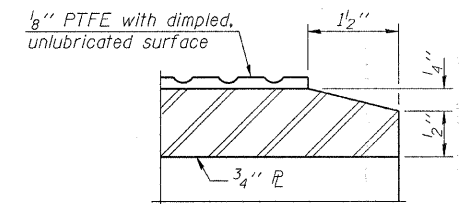
**SECTION A-A**



**SECTION B-B**



**PLAN-PTFE SURFACE**  
(Both Abutments)



**SECTION THRU PTFE**  
(Both Abutments)

Notes:  
Anchor bolts shall be ASTM F1554 all-thread (or an Engineer-approved alternate material) of the grade(s) and diameter(s) specified. ASTM A307 Grade C anchor bolts may be used in lieu of ASTM F1554 Grade 36 (Fy=36ksi). The corresponding specified grade of AASHTO M314 anchor bolts may be used in lieu of ASTM F1554.

Anchor bolts for Type II bearings shall be placed in holes drilled in the concrete through holes in the bottom bearing plate after members are in place. Side retainers shall be placed after bolts are installed.

Drilled and set anchor bolts shall be installed according to Article 521.06 of the Standard Specifications.

Side retainers and other steel members required for the bearing assembly shall be included in the cost of Elastomeric Bearing Assembly, Type II.

The 1/8 inch PTFE sheet shall be bonded directly to the top steel plate with a two-component, medium viscosity epoxy resin, conforming to the requirements of the Federal Specification MMM-A-134, Type I. The bond agent shall be applied on the full area of the contact surfaces.

Bonding of 1/8 inch PTFE sheet during vulcanizing process will be permitted provided the process and method of adjusting assembly height is approved by the Engineer.

Two 1/8 inch adjustment shims shall be provided for each bearing in addition to all other plates or shims and placed as shown on bearing details.

The structural steel plates of the Bearing Assembly shall conform to the requirements of AASHTO M 270 Grade 50W.

Two 1/8 inch adjustment shims shall be provided for each bearing in addition to all other plates or shims and placed as shown on bearing details.

**BILL OF MATERIAL**

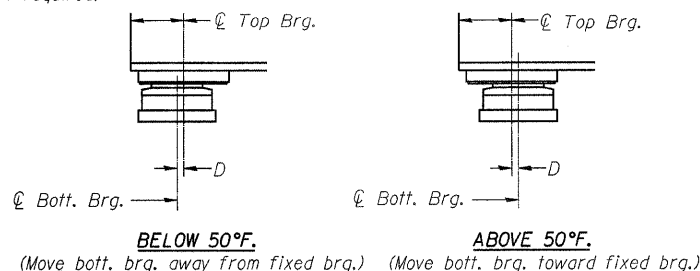
Item	Unit	Total
Elastomeric Bearing Assembly Type II	Each	8
Anchor Bolts, 1 1/4"	Each	16

**ELASTOMERIC BEARING DETAILS  
STRUCTURE NO. 074-3296**

DESIGNED - M.D.C.
CHECKED - S.M.S.
DRAWN - D.A.B.
CHECKED - M.G.B.

I-2E-2

10-1-08



**SETTING ANCHOR BOLTS AT EXP. BRG.**

D=1/8 inch per each 100' of expansion for every 15° temp. change from the normal temp. of 50°F.

**HAMPTON, LENZINI & RENWICK, INC.**  
CIVIL & STRUCTURAL ENGINEERS  
LAND SURVEYORS

**HLR** 3085 STEVENSON DRIVE, SUITE 201  
SPRINGFIELD, ILLINOIS 62703  
(217) 548-3400

PROJECT NUMBER: 12-76-0001-1 DATE: 12/22/08

T.R.	SECTION	COUNTY	TOTAL SHEETS	SHEET NO.
154	03-06130-00-BR	PIATT	57	27
SANGAMON ROAD DISTRICT		CONTRACT NO. 91385		
FED. ROAD DIST. NO.		ILLINOIS FED. AID PROJECT		