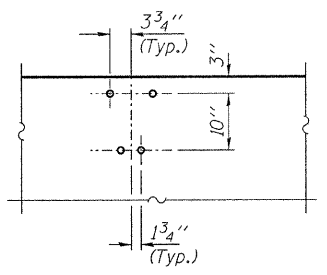
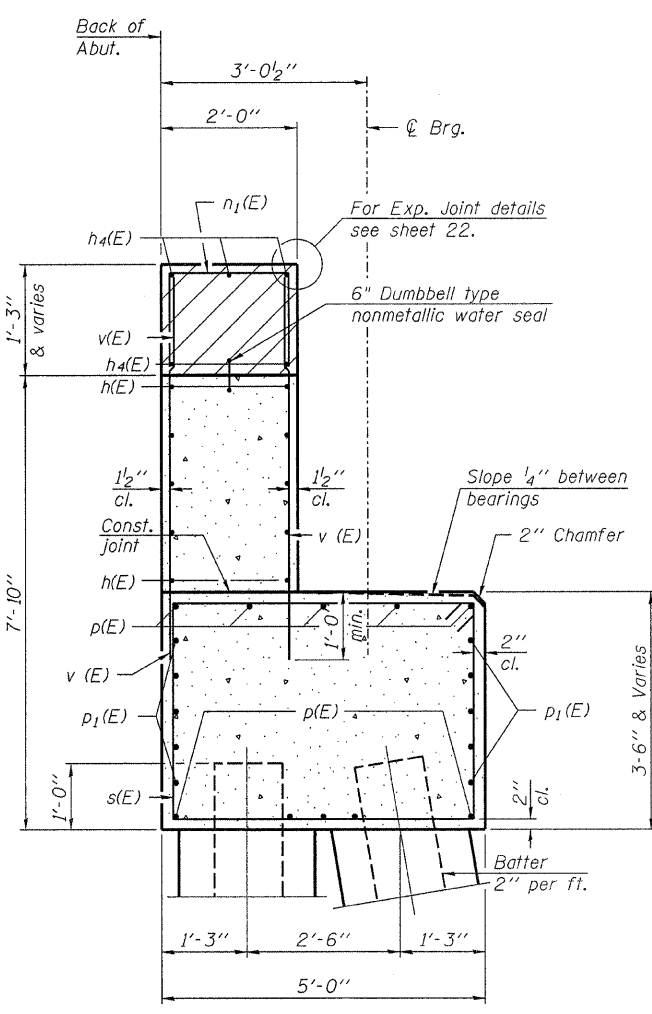


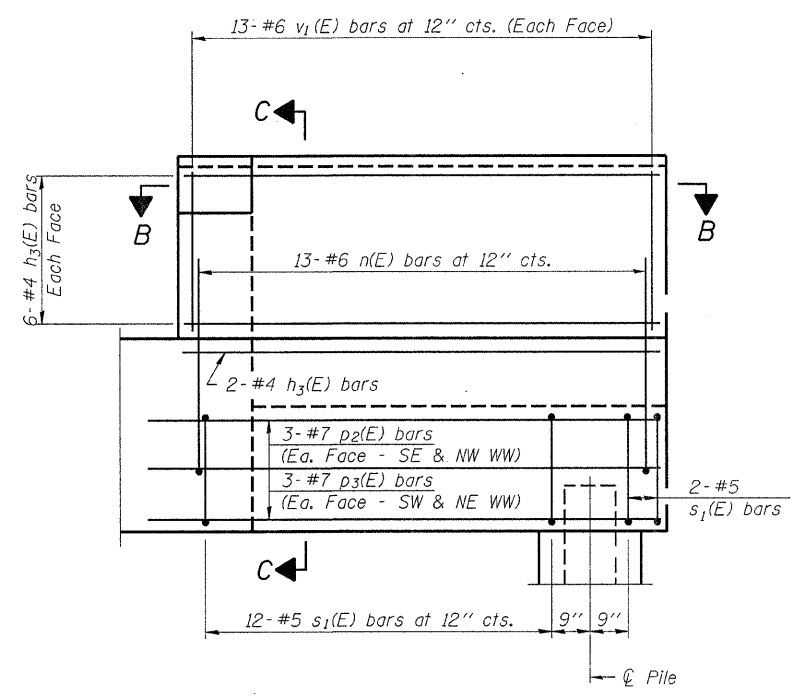
**WING WALL ELEVATION**  
Showing Dimensions



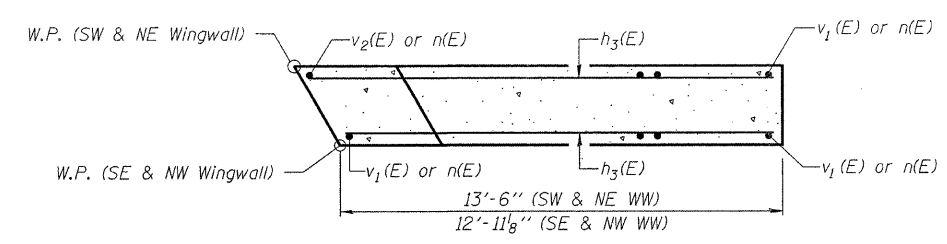
**DETAIL A**  
(Rail Insert Detail)



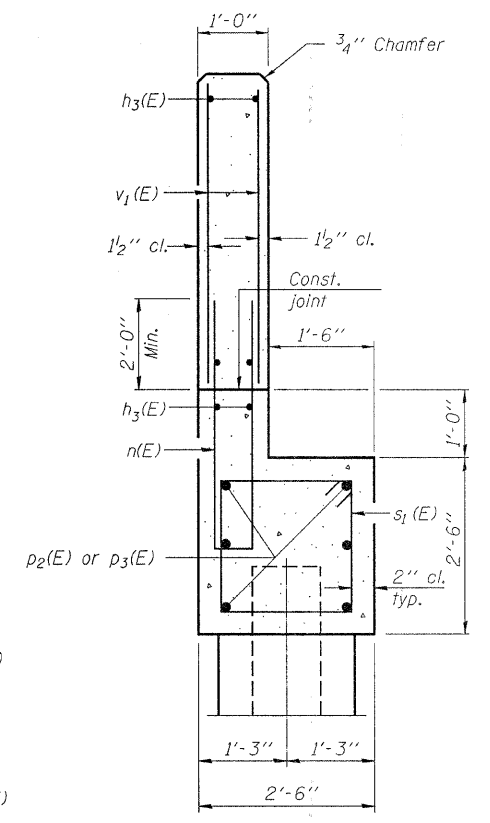
**SEC. THRU ABUT.**



**WING WALL ELEVATION**  
Showing Reinforcement



**SECTION B-B**



**SECTION C-C**

**Notes:**  
Hatched area to be poured after superstructure false work has been removed. Quantity of concrete included with Concrete Superstructure. Space reinforcement in cap to miss anchor bolts. Pour steps monolithically with cap. For Pile and Concrete Encasement details, see sheet 32.

**PILE DATA**

Type	Steel HP12x63
No. Req'd. (2 Abut.)	*18
Factored Resistance Available (Rf)	146 Kips/Pile
Nominal Required Bearing (Rn)	309 Kips/Pile (S. Abut.) 305 Kips/Pile (N. Abut.)
Est. Length	38 Ft/Pile (S. Abut.) 36 Ft/Pile (N. Abut.)

**Notes:** \* Includes one test pile to be driven in permanent locations at the South Abutment.

The Steel H-Piles shall be according to AASHTO M270 Grade 50.

The test piles shall be driven to 110 percent of the Nominal Required Bearing indicated in the pile data information.

**ABUTMENT DETAILS**  
**STRUCTURE NO. 074-3296**

DESIGNED	M.D.C.
CHECKED	S.M.S.
DRAWN	D.A.B.
CHECKED	M.G.B.

A-1-D 10-1-08

**HAMPTON, LENZINI & RENWICK, INC.**  
CIVIL & STRUCTURAL ENGINEERS  
LAND SURVEYORS  
3085 STEVENSON DRIVE, SUITE 201  
SPRINGFIELD, ILLINOIS 62703  
(217) 546-3400

T.R.	SECTION	COUNTY	TOTAL SHEETS	SHEET NO.
154	03-06130-00-BR	PIATT	57	29
SANGAMON ROAD DISTRICT		CONTRACT NO. 91385		
FED. ROAD DIST. NO.	ILLINOIS	FED. AID PROJECT		

PROJECT NUMBER: 12-75-0001-1 DATE: 12/22/08