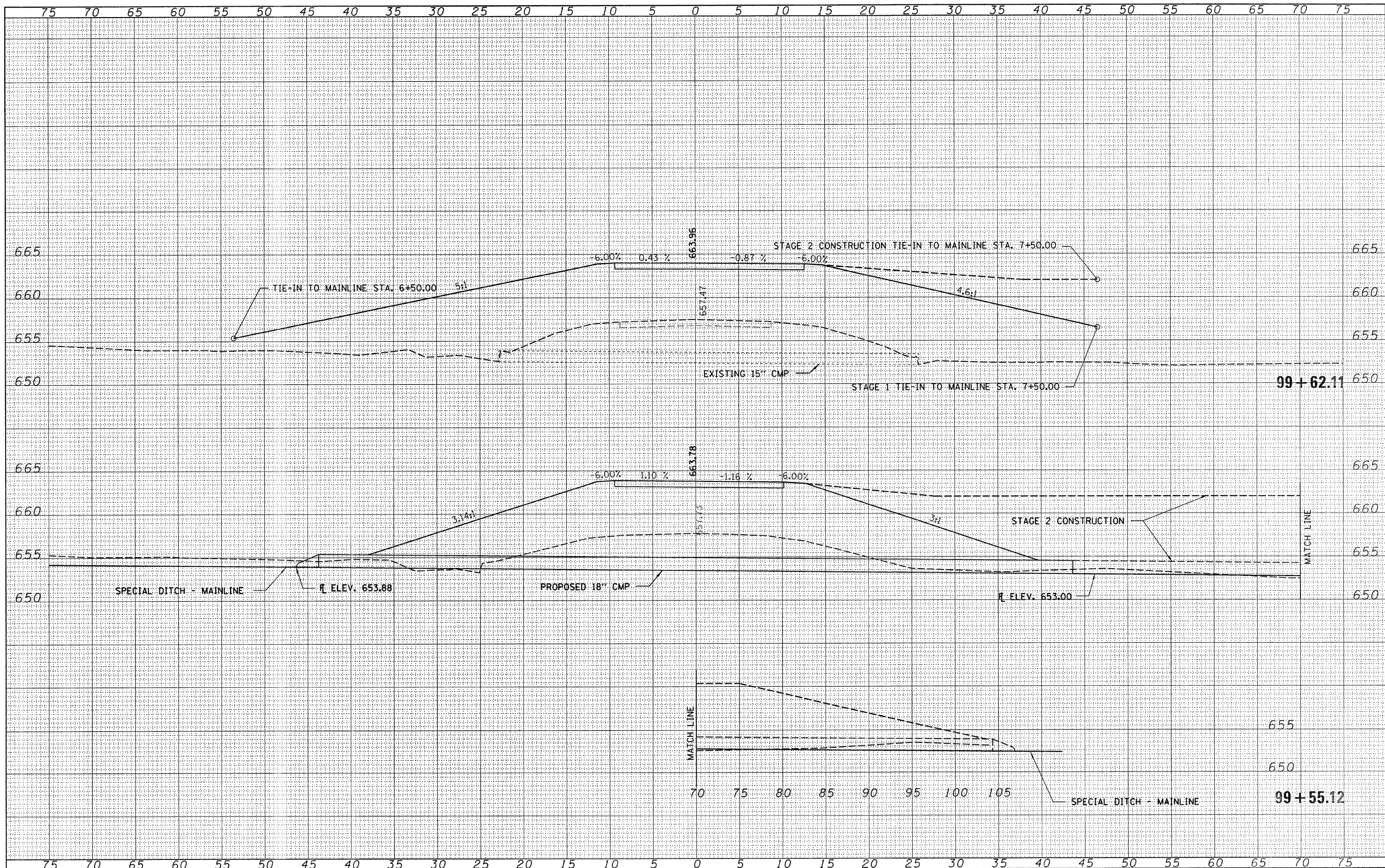


DATE	
BY	
TURNED IN	
PLOTTED	
TEMPLATE	
NOTE BOOK	
AREAS CHECKED	
NO.	

DATE	
BY	
ORIGINAL SURVEY	
NOTE BOOK	
AREAS CHECKED	
NO.	



FILE NAME = 75001-sht-sxs_SR.dgn	USER NAME =	DESIGNED - L.F.S.	REVISED -	<b>STATE OF ILLINOIS</b> <b>ILLINOIS DEPARTMENT OF TRANSPORTATION</b>	<b>HAMPTON, LENZINI &amp; RENWICK, INC.</b> CIVIL & STRUCTURAL ENGINEERS LAND SURVEYORS	<b>CROSS SECTIONS</b> <b>SIDE ROAD</b>	T.R.	SECTION	COUNTY	TOTAL SHEETS	SHEET NO.
PLOT SCALE =	CHECKED - S.W.M.	REVISED -	154				03-06130-00-BR	PIATT	57	54	
PLOT DATE = 12/23/2008	DATE - 10/21/08	REVISED -	CONTRACT NO. 91385								
							SCALE: SHEET NO. OF SHEETS		STA. 99+55.12 TO STA. 99+62.11		FED. ROAD DIST. NO. [ILLINOIS] FED. AID PROJECT