

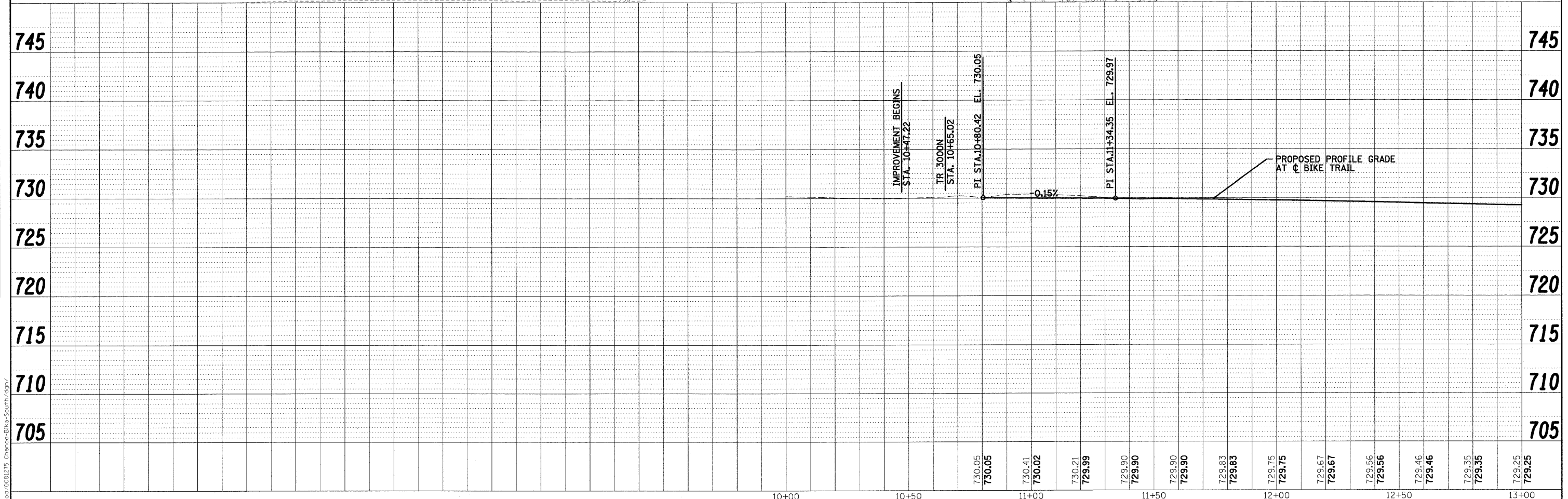
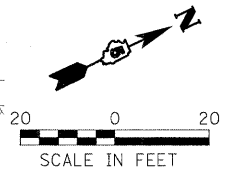
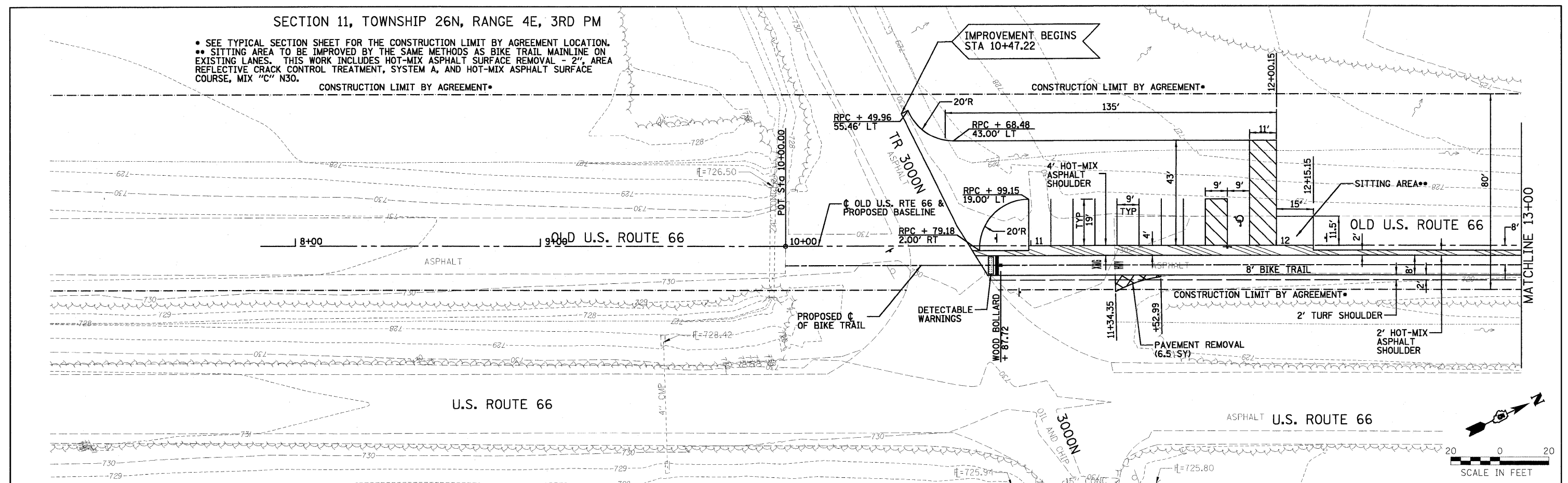
SECTION 11, TOWNSHIP 26N, RANGE 4E, 3RD PM

• SEE TYPICAL SECTION SHEET FOR THE CONSTRUCTION LIMIT BY AGREEMENT LOCATION.
 •• SITTING AREA TO BE IMPROVED BY THE SAME METHODS AS BIKE TRAIL MAINLINE ON EXISTING LANES. THIS WORK INCLUDES HOT-MIX ASPHALT SURFACE REMOVAL - 2", AREA REFLECTIVE CRACK CONTROL TREATMENT, SYSTEM A, AND HOT-MIX ASPHALT SURFACE COURSE, MIX "C" N30.

CONSTRUCTION LIMIT BY AGREEMENT*

PLAN	DESIGNED	DATE
BY	CHECKED	
NO.	NO.	

PROFILE	DESIGNED	DATE
BY	CHECKED	
NO.	NO.	



FILE NAME =	USER NAME = #USER#	DESIGNED - DWR	REVISED -	STATE OF ILLINOIS DEPARTMENT OF TRANSPORTATION	BIKE TRAIL PLAN AND PROFILE		F.A. RTE.	SECTION	COUNTY	TOTAL SHEETS	SHEET NO.
#FILEL#		DRAWN - AJD/JTC	REVISED -				06-00025-01-BT	MCLEAN	36	5	
PLOT SCALE = #SCALE#		CHECKED - ERB	REVISED -				CONTRACT NO. 91410				
PLOT DATE = #DATE#		DATE - 03/27/09	REVISED -				FED. ROAD DIST. NO. ILLINOIS FED. AID PROJECT				
				SCALE: 1" = 20' SHEET NO. OF SHEETS STA. 10+00 TO STA. 13+00							