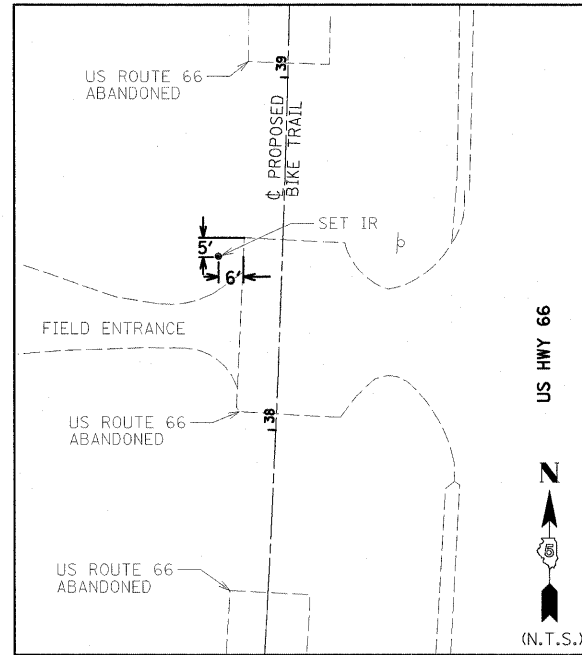
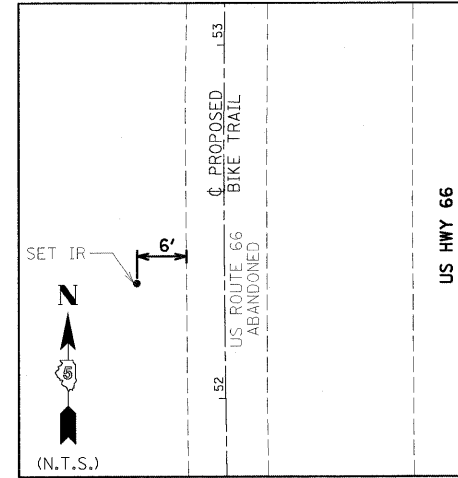


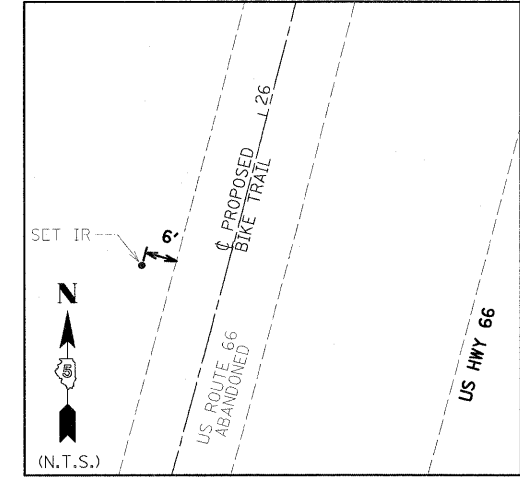
CONTROL TIE #118
 SET IRON ROD
 STA. 64+36.59/11.14' LT
 N 1484181.005
 E 874400.199



CONTROL TIE #119
 0.60 MI S. RT 24
 SET IRON ROD
 STA. 38+48.39/18.05' LT
 N 1481602.459
 E 874262.363



CONTROL TIE #120
 0.20 MI S. RT 24
 SET IRON ROD
 STA. 52+49.50/18.98' LT
 N 1483002.730
 E 874250.049



CONTROL TIE #121
 SET IRON ROD
 STA. 25+62.60/17.64' LT
 N 1480337.137
 E 874074.913

BEGINNING C BIKE TRAIL COORDINATES
 STA. 10+79.94/8.00' RT
 N 1478953.827
 E 873552.981

ENDING C BIKE TRAIL COORDINATES
 STA. 69+95.56/7.98' RT
 N 1484708.913
 E 874584.547

IMPROVEMENT BEGINS COORDINATES
 STA. 10+47.22/54.09' LT
 N 1478951.002
 E 873482.848

IMPROVEMENT ENDS COORDINATES
 STA. 69+95.56/7.98' RT
 N 1484708.913
 E 874584.547

D:\City of Champaign\068215 Champaign Bike-South.dgn

FILE NAME =	USER NAME = #USER#	DESIGNED - DWR	REVISED -	STATE OF ILLINOIS DEPARTMENT OF TRANSPORTATION	CONTROL AND SURVEY TIES			F.A. RTE.	SECTION	COUNTY	TOTAL SHEETS	SHEET NO.
#FILE#		DRAWN - AJD/JTC	REVISED -						06-0025-01-BT	MCLEAN	36	16
PLOT SCALE = #SCALE#		CHECKED - ERB	REVISED -		SHEET NO. OF SHEETS STA. 10+47.22 TO STA. 69+95.56			CONTRACT NO. 91410				
PLOT DATE = #DATE#		DATE - 03/27/09	REVISED -		FED. ROAD DIST. NO. ILLINOIS FED. AID PROJECT							