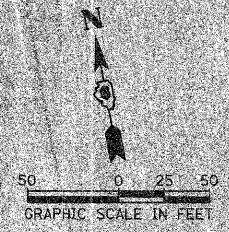


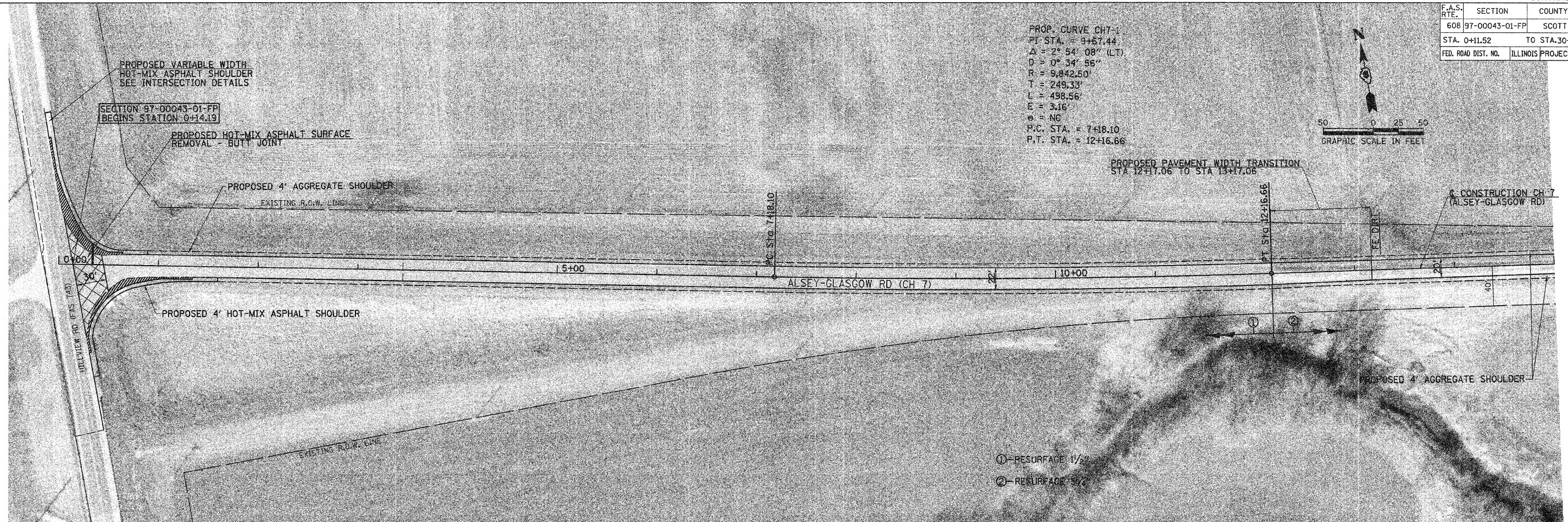
F.A.S. RTE.	SECTION	COUNTY	TOTAL SHEETS	SHEET NO.
608	97-00043-01-FP	SCOTT	17	5
STA. 0+11.52		TO STA. 30+00		
FED. ROAD DIST. NO.		ILLINOIS PROJECT NO SR-0608(109)		

PROP. CURVE CH7-1
 PI STA. = 9+67.44
 $\Delta = 2^\circ 54' 08''$ (LT)
 $D = 0^\circ 34' 56''$
 $R = 9,842.50'$
 $T = 249.33'$
 $L = 498.56'$
 $E = 3.16'$
 $e = NC$
 P.C. STA. = 7+18.10
 P.T. STA. = 12+16.66



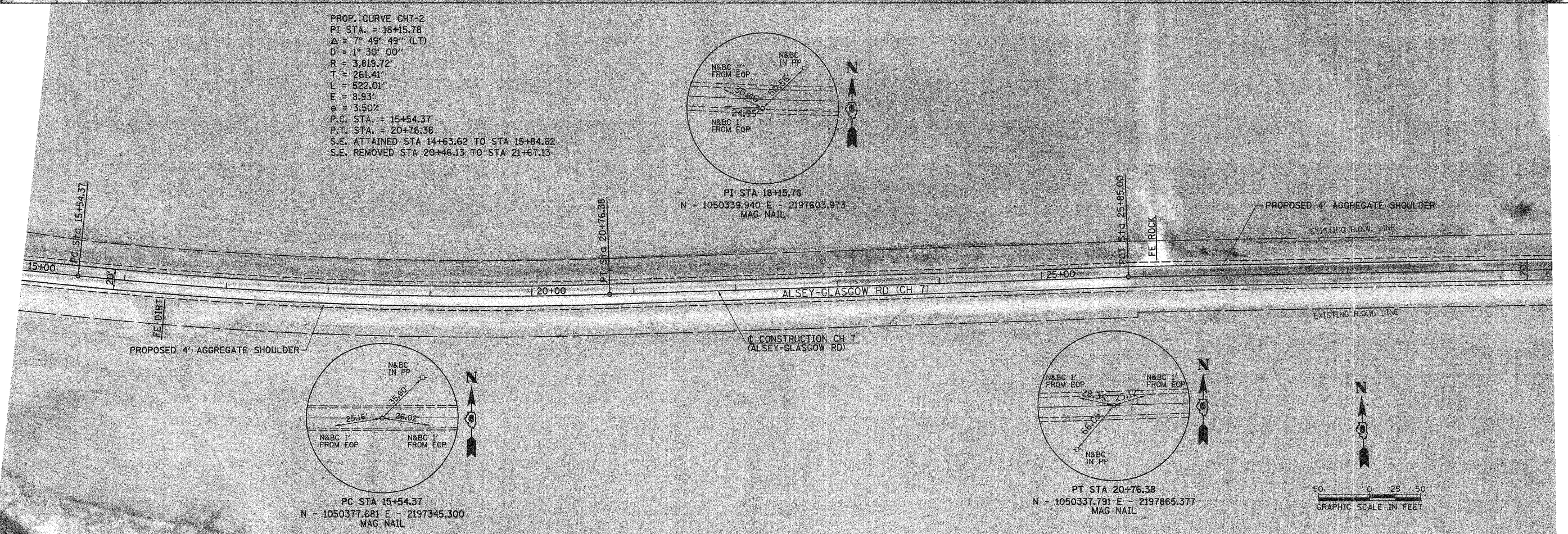
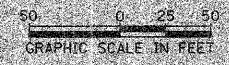
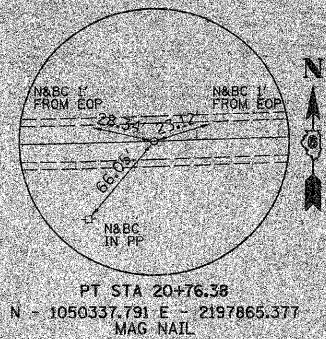
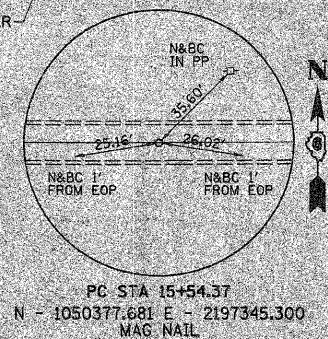
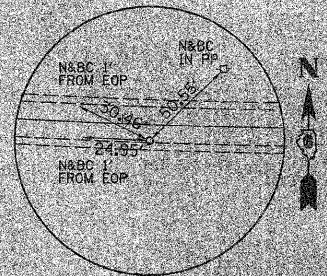
PROPOSED PAVEMENT WIDTH TRANSITION
 STA 12+17.06 TO STA 13+17.06

CONSTRUCTION CH 7
 (ALSEY-GLASGOW RD)



- ① - RESURFACE 1 1/2"
- ② - RESURFACE 5/2"

PROP. CURVE CH7-2
 PI STA. = 18+15.78
 $\Delta = 7^\circ 49' 49''$ (LT)
 $D = 1^\circ 30' 00''$
 $R = 3,819.72'$
 $T = 261.41'$
 $L = 522.01'$
 $E = 8.93'$
 $e = 3.50\%$
 P.C. STA. = 15+54.37
 P.T. STA. = 20+76.38
 S.E. ATTAINED STA 14+63.62 TO STA 15+84.82
 S.E. REMOVED STA 20+46.13 TO STA 21+67.13



PLOT DATE = 3/2/2009
 FILE NAME = V:\2438\COMBINED PLANS\2438p001.dgn
 SCALE = 1/8" = 100'
 USER NAME = bborghen