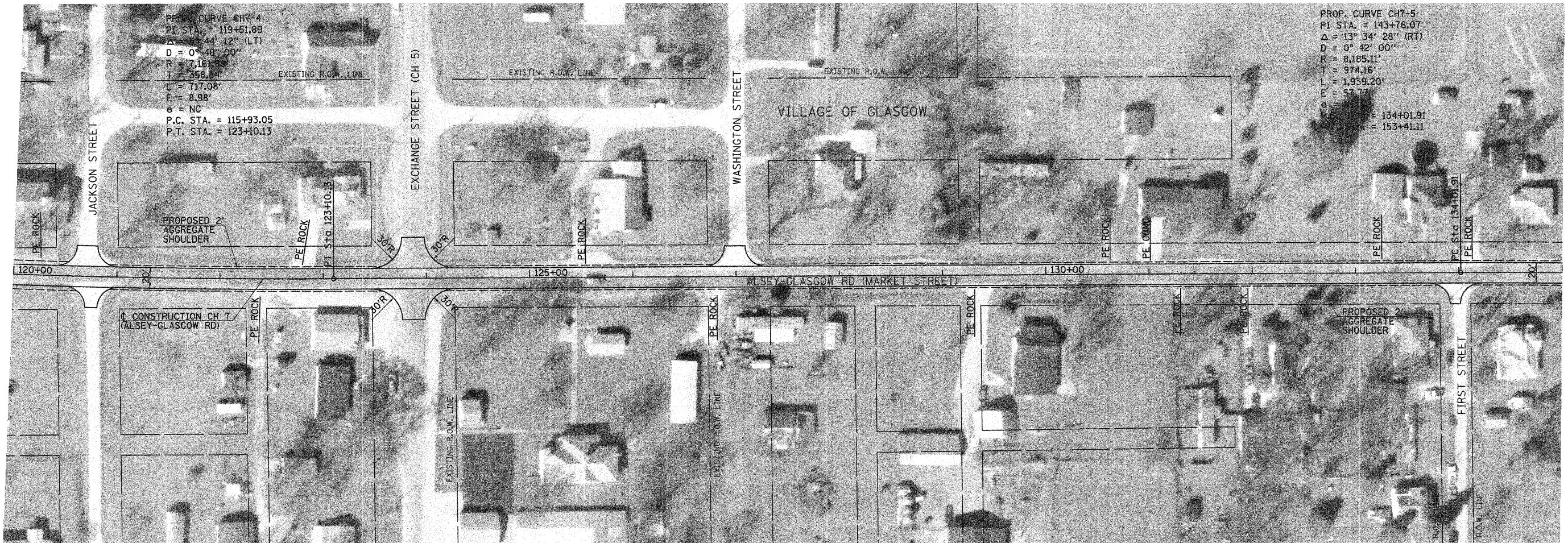
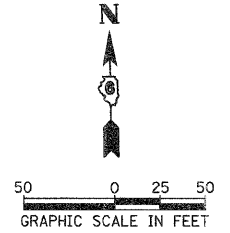
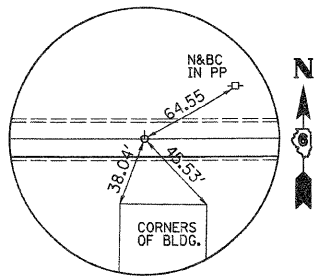


| F.A.S. RTE. | SECTION | COUNTY | TOTAL SHEETS | SHEET NO. |
|---------------------|----------------|-------------------------|--------------|-----------|
| 608 | 97-00043-01-FP | SCOTT | 17 | 9 |
| STA. 120+00 | | TO STA.135+00 | | |
| FED. ROAD DIST. NO. | ILLINOIS | PROJECT NO SR-0608(109) | | |

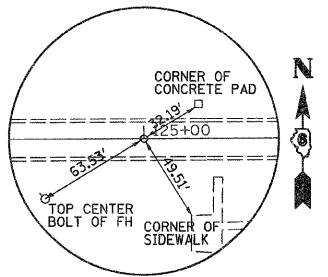


PROP. CURVE CH7-4
 P.I. STA. = 119+51.89
 $\Delta = 44^\circ 12' 12''$ (LT)
 D = 0° 48' 00"
 R = 7,161.84'
 T = 398.84'
 L = 717.08'
 E = 8.98'
 $\theta = NC$
 P.C. STA. = 115+93.05
 P.T. STA. = 123+10.13

PROP. CURVE CH7-5
 P.I. STA. = 143+76.07
 $\Delta = 13^\circ 34' 28''$ (RT)
 D = 0° 42' 00"
 R = 8,165.11'
 T = 974.16'
 L = 1,939.20'
 E = 57.73'
 $\theta = 134^\circ 01.91'$
 $\theta = 153^\circ 41.11'$



POT STA 123+00.00
 N - 1049938.801 E - 2208077.761
 MAG NAIL



POT STA 125+00.00
 N - 1049936.394 E - 2208277.747
 MAG NAIL

PLOT DATE = 3/2/2009
 FILE NAME = V:\2430\COMBINED PLANS\2430p005.dgn
 SCALE = 1/8" = 100'
 USER NAME = Eborghien