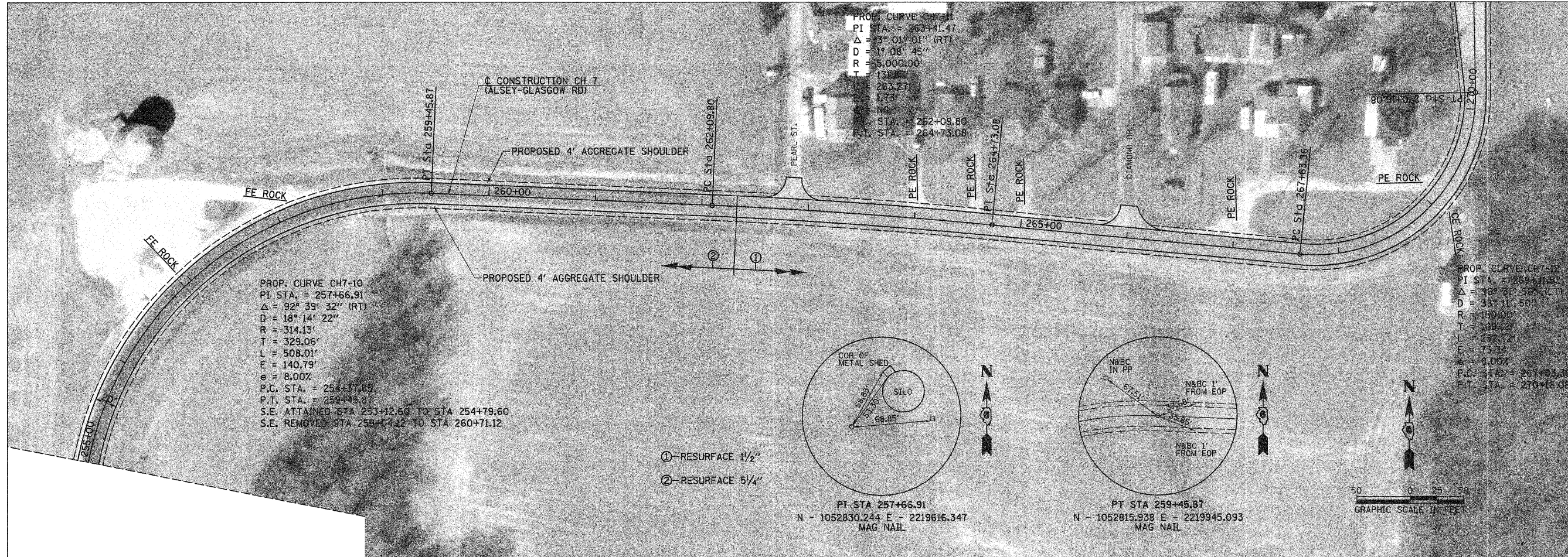


F.A.S. RTE.	SECTION	COUNTY	TOTAL SHEETS	SHEET NO.
608	97-00043-01-FP	SCOTT	17	14
STA. 255+00		TO STA. 262+33		
FED. ROAD DIST. NO.		ILLINOIS PROJECT NO SR-0608(109)		

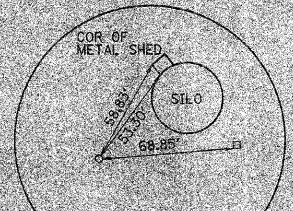


PROP. CURVE CH7-10
 PI STA. = 257+66.91
 $\Delta = 92^\circ 39' 32''$ (RT)
 $D = 18^\circ 14' 22''$
 $R = 314.13'$
 $T = 329.06'$
 $L = 508.01'$
 $E = 140.79'$
 $e = 8.00\%$
 P.C. STA. = 254+37.05
 P.T. STA. = 259+45.87
 S.E. ATTAINED STA 253+12.60 TO STA 254+79.60
 S.E. REMOVED STA 259+04.12 TO STA 260+71.12

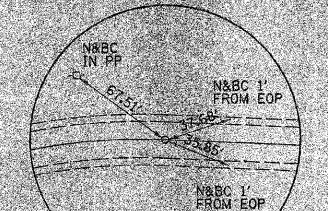
PROP. CURVE CH7-11
 PI STA. = 263+41.47
 $\Delta = 73^\circ 01' 01''$ (RT)
 $D = 11^\circ 08' 45''$
 $R = 5,000.00'$
 $T = 131.87'$
 $L = 263.27'$
 $E = 17.73'$
 $e = 0.00\%$
 STA. = 262+09.80
 P.T. STA. = 264+73.08

PROP. CURVE CH7-12
 PI STA. = 269+71.52
 $\Delta = 32^\circ 31' 58''$ (LT)
 $D = 11^\circ 11' 50''$
 $R = 150.00'$
 $T = 119.41'$
 $L = 257.72'$
 $E = 73.34'$
 $e = 0.00\%$
 P.C. STA. = 267+63.36
 P.T. STA. = 270+16.08

- ① - RESURFACE 1 1/2"
- ② - RESURFACE 5/4"



PI STA 257+66.91
 N - 1052830.244 E - 2219616.347
 MAG NAIL



PT STA 259+45.87
 N - 1052815.938 E - 2219945.093
 MAG NAIL



PLOT DATE = 3/2/2009
 FILE NAME = V:\2438\COMBINED PLANS\2438p010.dgn
 USER = J...
 USER NAME = ...