

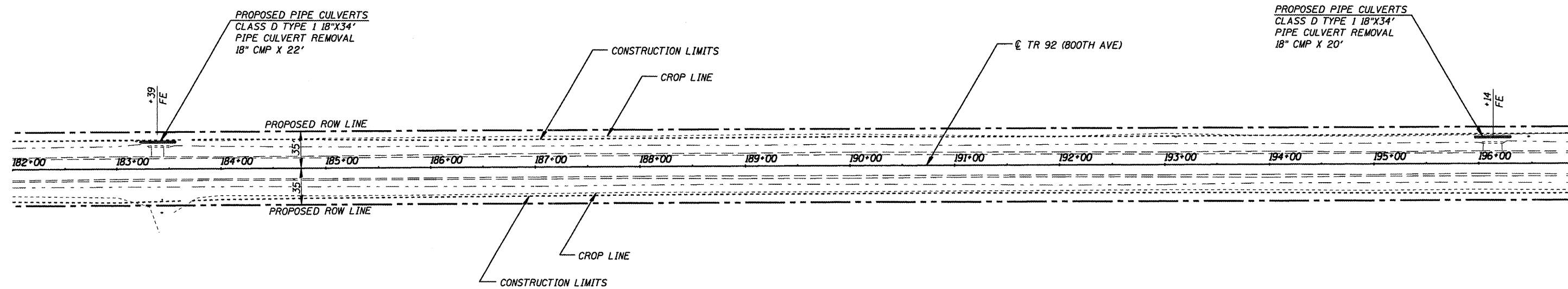
E 1/2, SEC 17, T18N, R3W, 3RD PM

COUNTRY VIEW, INC  
C/O DUANE STEINER

PROPOSED PIPE CULVERTS  
CLASS D TYPE 1 18"X34"  
PIPE CULVERT REMOVAL  
18" CMP X 22'

PROPOSED PIPE CULVERTS  
CLASS D TYPE 1 18"X34"  
PIPE CULVERT REMOVAL  
18" CMP X 20'

DATE	
BY	
REVIEWED	
ALIGNED	
PLANNED	
NOTED	
NO.	

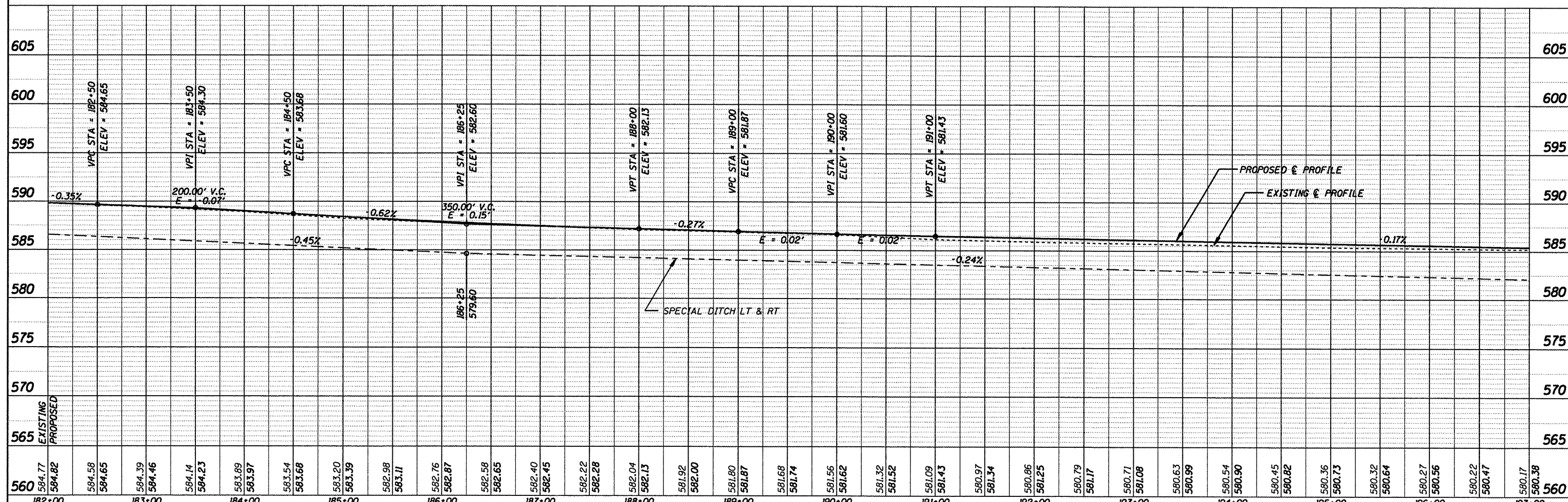


WILLIAM B. BATES

SALLY VAUGHN

W 1/2, SEC 16, T18N, R3W, 3RD PM

DATE	
BY	
REVIEWED	
ALIGNED	
PLANNED	
NOTED	
NO.	



560	584.77	584.82	584.58	584.65	584.39	584.46	584.14	584.23	583.89	583.97	583.54	583.68	583.20	583.39	582.98	583.11	582.76	582.87	582.58	582.65	582.40	582.45	582.22	582.28	582.04	582.13	581.92	582.00	581.80	581.87	581.68	581.74	581.56	581.62	581.32	581.32	581.09	581.43	580.97	581.34	580.86	581.25	580.79	581.17	580.71	581.08	580.63	580.99	580.54	580.90	580.45	580.82	580.36	580.73	580.32	580.64	580.27	580.56	580.22	580.47	580.17	580.38	560
	182+00	183+00			184+00				185+00				186+00				187+00			188+00				189+00				190+00				191+00				192+00				193+00				194+00				195+00				196+00				197+00							

CUMMINS ENGINEERING CORPORATION

JOB # 2217  
FILE NAME = 800ave\_pp3.dgn  
PLOT SCALE = 100.0000' / IN.  
PLOT DATE = 1/28/2009

DESIGNED - NAK  
DRAWN - AJH  
CHECKED - NAK  
DATE - 11/03/2008

REVISED -  
REVISED -  
REVISED -  
REVISED -

LOGAN COUNTY  
CH 10, TR 199A, TR 92 IMPROVEMENTS

PLAN & PROFILE - 800TH AVE

F.A.S. RTE.	SECTION	COUNTY	TOTAL SHEETS	SHEET NO.
566	05-00113-00-WR	LOGAN	63	22
CH 10, TR 199A, TR 92			CONTRACT NO.	
FED. ROAD DIST. NO. ILLINOIS FED. AID PROJECT				

STA. 182+00 TO STA. 197+00

93482