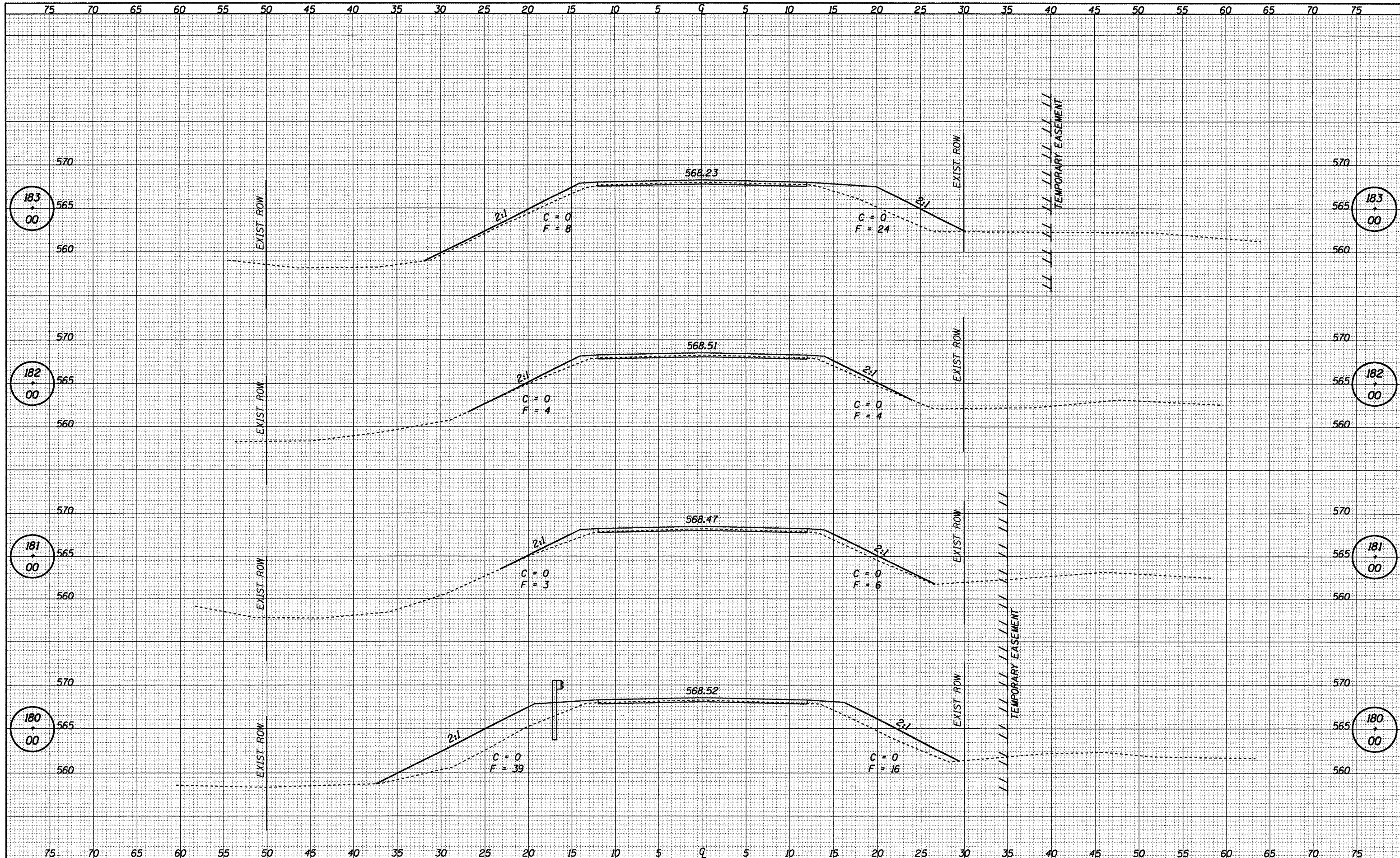


DATE	
BY	
FINAL SURVEY	
NOTED	
PLOTTED	
TEMPLATE	
AREAS	
CHECKED	

DATE	
BY	
ORIGINAL SURVEY	
NOTED	
PLOTTED	
TEMPLATE	
AREAS	
CHECKED	



CUMMINS
ENGINEERING
CORPORATION

JOB = 2217
FILE NAME = 2217.ssc.dgn
PLOT SCALE = 10.0000 ft / in.
PLOT DATE = 1/20/2009

DESIGNED	- NAK	REVISED	-
DRAWN	- AJH	REVISED	-
CHECKED	- NAK	REVISED	-
DATE	- 10/16/2008	REVISED	-

LOGAN COUNTY
CH 10, TR 199A, TR 92 IMPROVEMENTS

CROSS SECTIONS - CH 10
STA. 180+00 TO STA. 183+00

F.A.S. RTE.	SECTION	COUNTY	TOTAL SHEETS	SHEET NO.
566	05-00113-00-WR	LOGAN	63	55
CH 10, TR 199A, TR 92		CONTRACT NO.		
FED. ROAD DIST. NO.		[ILLINOIS] FED. AID PROJECT		

93482