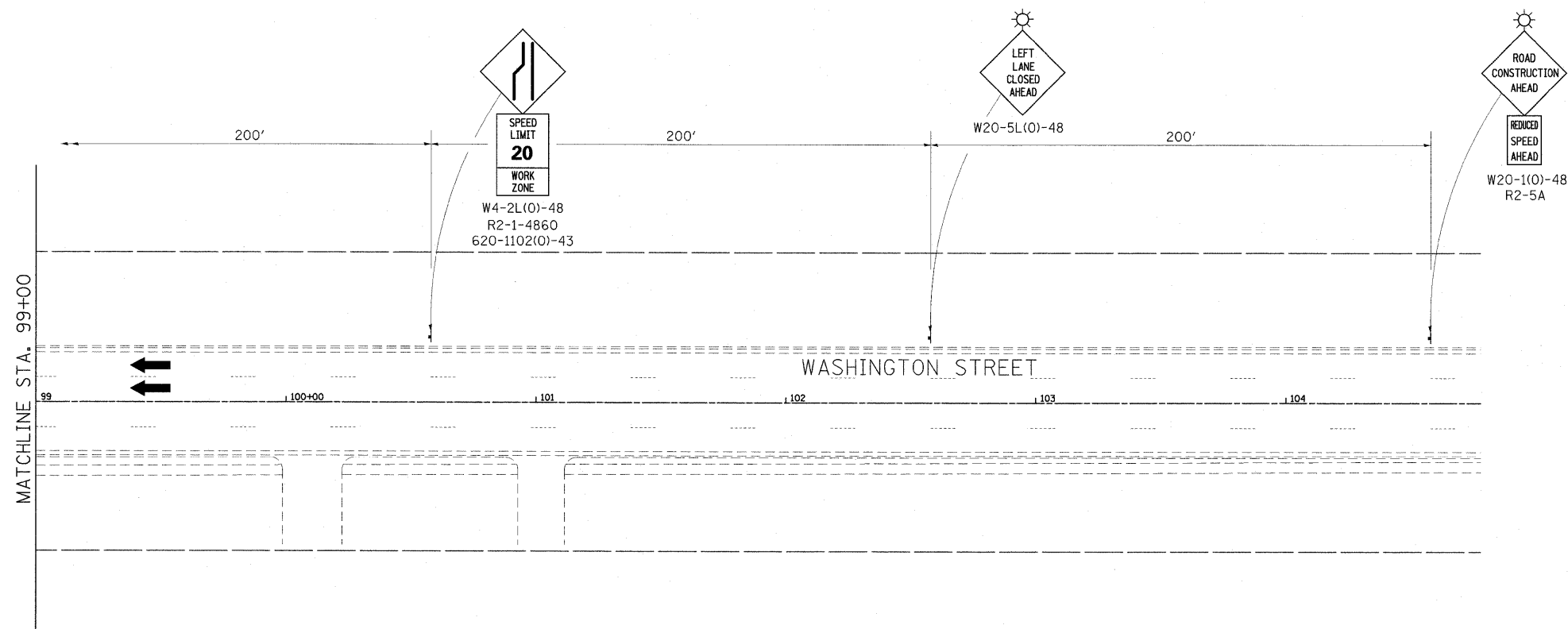


NOTE:
CONTRACTOR TO MAINTAIN ENTRANCE ACCESS TO/FROM WESTBOUND TRAFFIC AT ALL TIMES.



LEGEND

	WORK AREA
	TEMPORARY CONCRETE BARRIER
	TEMPORARY IMPACT ATTENUATOR
	SIGN ON PORTABLE OR PERMANENT SUPPORT
	TYPE C BIDIRECTIONAL REFLECTOR (INCLUDED WITH THE COST FOR CONCRETE BARRIER)
	DRUM
	FLEXIBLE DELINEATOR
	RAISED REFLECTIVE PAVEMENT MARKER, TYPE 2
	TYPE III BARRICADE
	LIGHTS, TYPE A

FILE NAME = ...\\Sheets\NMT_STG 1.SHT02.dgn	USER NAME = Brad Downen	DESIGNED - BJD	REVISED -	CITY OF SPRINGFIELD SPRINGFIELD, ILLINOIS	MAINTENANCE OF TRAFFIC STAGE I S.N. 084-6001 (E) WASHINGTON STREET OVER JACKSONVILLE BRANCH			F.A.U. RTE. 7977	SECTION # 05-00443-00-BR	COUNTY SANGAMON	TOTAL SHEETS 28	SHEET NO. 7
PLOT SCALE = 30.00000' / IN.	DRAWN - GLD	CHECKED - SPH	REVISED -		SCALE:	SHEET NO.	OF	SHEETS	STA.	TO STA.	CONTRACT NO. 3485	
PLOT DATE = 3/10/2009	DATE - 03/10/2009	REVISED -	REVISED -		FED. ROAD DIST. NO. 6 ILLINOIS FED. AID PROJECT							
					*CITY OF SPRINGFIELD							