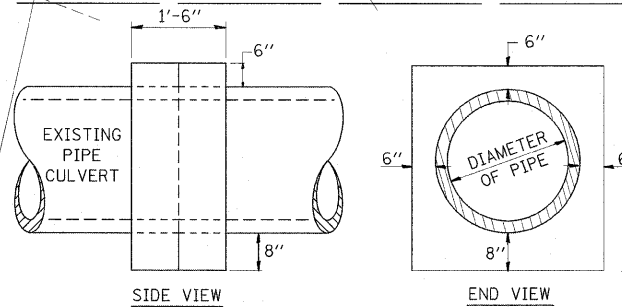


TYPE 3V FRAME & GRATE
CONTRACTOR TO DETERMINE LOCATION OF MANHOLE OR INLET RELATIVE TO THE FRAME & GRATE

TYPE 1 FRAME & LID
CONTRACTOR TO DETERMINE LOCATION OF MANHOLE OR INLET RELATIVE TO THE FRAME & LID



TABULATION

DIAMETER OF PIPE	CL. SI CONC. CU. YDS. EST.
12"	0.3
15"	0.3
30"	0.6

THE CONCRETE COLLAR SHALL BE PAID FOR AT THE CONTRACT UNIT PRICE PER CUBIC YARD FOR CONCRETE COLLAR, AS SHOWN ON THE PLANS.
CLASS SI CONCRETE SHALL BE USED THROUGHOUT.

- NOTE:**
- CONTRACTOR TO LOCATE ALL PIPES, INLETS, AND MANHOLES OUTSIDE OF THE APPROACH SLAB FOOTING.
 - SEE QUANTITY SCHEDULES FOR REMOVAL ITEMS AND LOCATIONS.
 - TEMPORARY DRAINAGE ITEMS TO BE CONSTRUCTED IN STAGE I AND REMOVED IN STAGE II UPON COMPLETION OF PROPOSED STORM SEWER CONNECTION. (SEE TRAFFIC CONTROL PLAN)
 - COST FOR TEMPORARY DRAINAGE ITEMS WILL NOT BE PAID FOR SEPARATELY BUT WILL BE INCLUDED IN TRAFFIC CONTROL COMPLETE.

