

PLAN

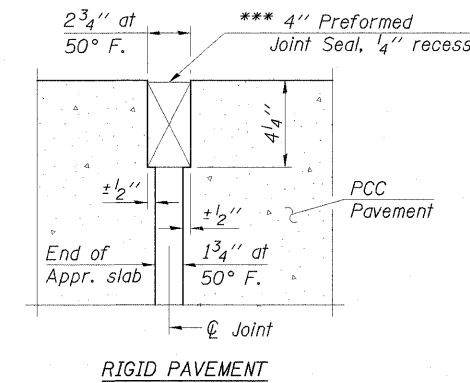
* Tilt #9b11(E) bars as required to maintain clearance.
 ** Alternate with a10 (E) bars.

MIN. BAR LAPS

#4 Bar = 1'-4"
 #5 Bar = 1'-8"

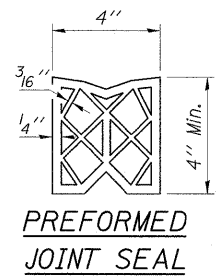
NOTES:

- See sheet 9 of 16 for Sections C-C & D-D.
 a10 (E), a11 (E), a12 (E), a13 (E), w10 (E) and w11 (E) bar spacings measured perpendicular to C Rdwy .
- See Sheet 11 of 16 For Parapet End Section Details.
- See Sheet 10 of 28 (Roadway Plans) For Drainage Details.

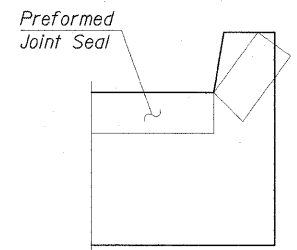


DETAIL A

*** Cost included with Concrete Superstructure.

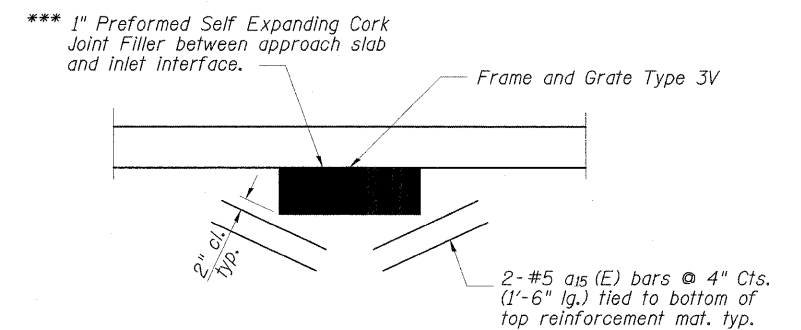


PREFORMED JOINT SEAL



VIEW F-F

Angle Preformed Joint Seal at 45° at curbs when req'd for drainage.



DETAIL B

*** Cost included with Concrete Superstructure.

FILE NAME = ...Asp Slab Details 1.dgn	USER NAME = Brad Downen	DESIGNED - SF	REVISED -	CITY OF SPRINGFIELD SPRINGFIELD, ILLINOIS	BRIDGE APPROACH SLAB DETAILS 1 STA. 86+95.74 S.N. 084-6001 (E) WASHINGTON STREET OVER JACKSONVILLE BRANCH			F.A.U. RTE. 7977	SECTION* 05-00443-00-BR	COUNTY SANGAMON	TOTAL SHEETS 28	SHEET NO. 19
	PLOT SCALE = 10,0000' / IN.	DRAWN - GLD	REVISED -		SCALE:	SHEET NO.	OF SHEETS	STA.	TO STA.	CONTRACT NO. 93485		
	PLOT DATE = 3/10/2009	CHECKED - WLB	REVISED -							FED. ROAD DIST. NO. 6 ILLINOIS FED. AID PROJECT		
		DATE - 03/10/2009	REVISED -							* CITY OF SPRINGFIELD		