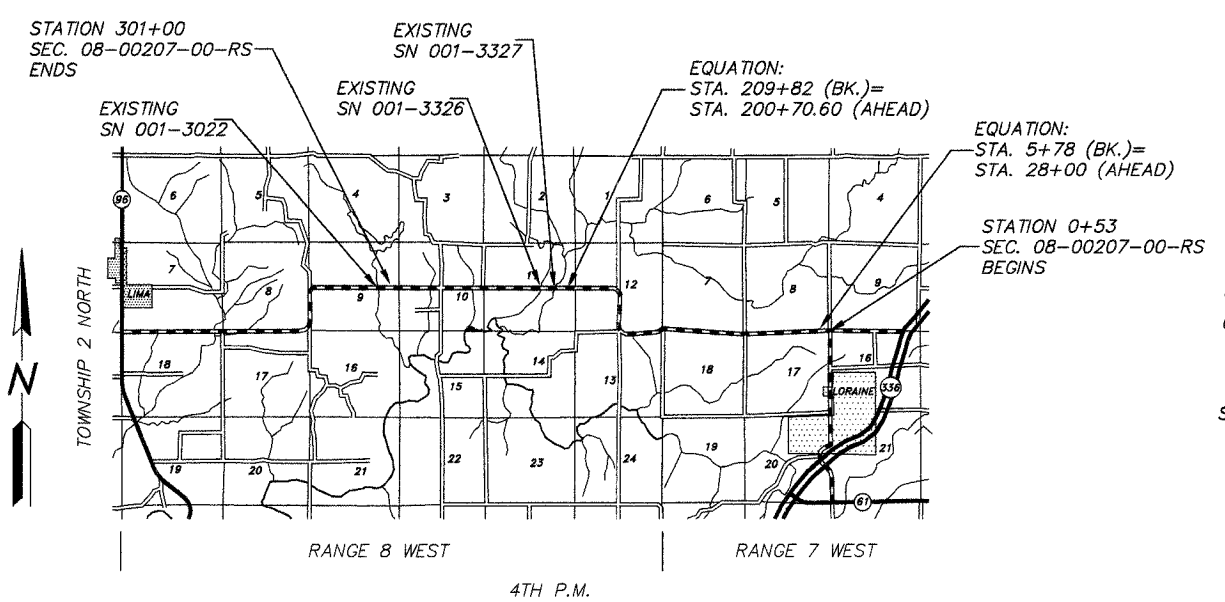
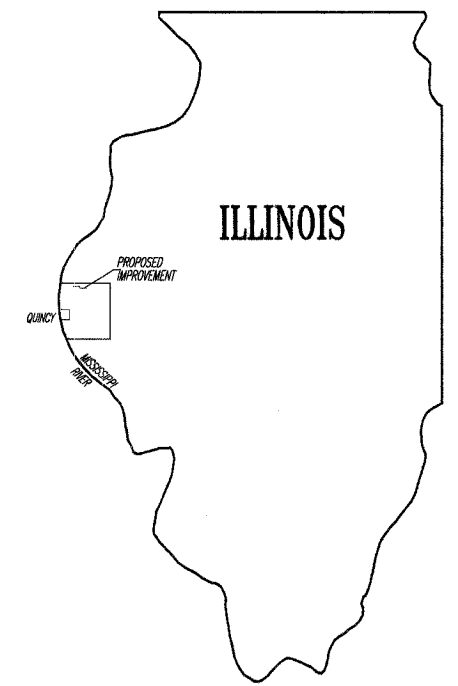


COUNTY	ROUTE	SECTION	TOTAL SHEETS	SHEET NO.
ADAMS	FAS 2592	08-00207-00-RS	15	1

INDEX OF SHEETS:

SHEET NO.	SHEET
1	TITLE SHEET
2	SUMMARY OF QUANTITIES
	GENERAL NOTES
3	TYPICAL CROSS SECTIONS
4-14	PLAN SHEETS
15	SIDE ROAD & ENTRANCE DETAILS
	BUTT JOINT DETAIL
STANDARD	701001-02
STANDARD	701006-03
STANDARD	701301-03
STANDARD	701306-02
STANDARD	701901-01
STANDARD	BLR 24-2

STATE OF ILLINOIS
DEPARTMENT OF TRANSPORTATION
DIVISION OF HIGHWAYS
PLANS FOR PROPOSED
SURFACE TRANSPORTATION/RURAL PROGRAM
LOCAL AGENCY PAVEMENT PRESERVATION
FAS 2592 (CH 1) SECTION 08-00207-00-RS ADAMS COUNTY
PROJECT NO. ARA-RS-2592(102) JOB NO. C-96-223-08



LOCATION MAP

FUNCTIONAL CLASS: MAJOR COLLECTOR (NON-URBAN)
ADT=375

PROPOSED IMPROVEMENT CONSISTS OF PLACING 1 1/2" POLYMERIZED HOT-MIX ASPHALT SURFACE COURSE, MIX "C", N50 OVER 3/4" OF LEVELING BINDER (MACHINE METHOD) N50 ON THE EXISTING 22" ROADWAY WITH OTHER MISCELLANEOUS CONSTRUCTION

- UTILITIES:**
- J.U.L.I.E. _____ 1-800-892-0123
 - ADAMS TELEPHONE _____ GOLDEN, IL
 - ADAMS RURAL ELECTRICAL CO-OP _____ CAMP POINT, IL
 - ABS WATER DISTRICT _____ GOLDEN, IL

GROSS LENGTH:
 STA. 0+53.00 TO STA. 5+78.00 = 525.00 FT.
 STA. 28+00.00 TO STA. 209+82.00 = 18,182.00 FT.
 STA. 200+70.60 TO STA. 301+00.00 = 10,029.40 FT.
 28,736.40 FT.

BRIDGE OMISSIONS:
 STA. 204+30.46 TO STA. 208+52.04 = 421.58 FT.
 STA. 214+99.25 TO STA. 217+00.75 = 201.50 FT.

NET LENGTH TO BE IMPROVED: 623.08 FT.
 28,113.32 FT. = 5.324 MILES

PROPOSED IMPROVEMENT MARKED THUS ———

THESE PLANS WERE PREPARED BY ME OR BY A FULL-TIME MEMBER OF MY STAFF WORKING UNDER MY PERSONAL SUPERVISION.

SUBMITTED BY Rick A. Klumpp DATE 12-9-08
 COUNTY ENGINEER
 LICENSE NO. 062-032961
 LIC. EXPIRES 11/30/2009

APPROVED <u>December 9</u> 2008	
<u>Rick A. Klumpp</u>	COUNTY ENGINEER
PASSED <u>March 31</u> 2009	
<u>Ross Ackerman</u>	DISTRICT ENGINEER OF CONSTRUCTION
PASSED <u>MARCH 31</u> 2009	
<u>Tom J. ...</u>	DISTRICT ENGINEER OF LOCAL ROADS AND STREETS
RELEASING FOR BID BASED ON LIMITED REVIEW <u>MARCH 31</u> 2009	
<u>Roger & Dinkell</u>	DEPUTY DIRECTOR OF HIGHWAYS REGION FOUR ENGINEER
STATE OF ILLINOIS DEPARTMENT OF TRANSPORTATION	