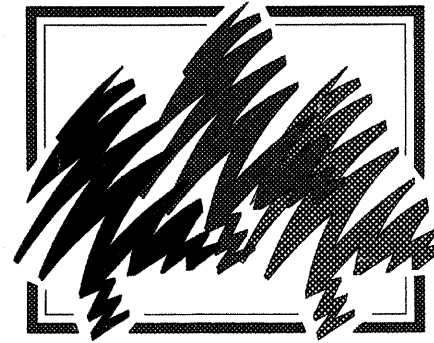


ROUTE NO.	SECTION	CITY	TOTAL SHEETS	SHEET NO.
STEVENS CREEK BIKEWAY	99-P4000-00-BP	DECATUR PARK DIST	145	1
FED. ROAD DIST. NO.		ILLINOIS	PROJECT TE-00D7(27)	

STATE OF ILLINOIS
DEPARTMENT OF TRANSPORTATION
PLANS FOR
PROPOSED LOCAL AGENCY IMPROVEMENT
ILLINOIS FIRST PROJECT



Decatur Park District

STEVENS CREEK BIKEWAY - PHASE I

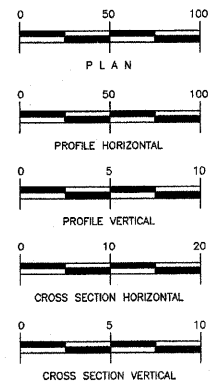
SECTION 99-P4000-00-BT
PROJECT TE - 00D7 (27)
C - 97 - 024 - 07
MACON COUNTY, ILLINOIS

CONTRACT NUMBER 95493

Underground facilities, structures and utilities have been plotted from available surveys and records and their locations must be considered approximate only. There may be others, the existence of which is presently not known. The depth of utilities is assumed to be normal and customary. Contractor shall verify location and depth of all utilities prior to construction.

IT'S THE LAW IN ILLINOIS
PRIOR TO COMMENCING ANY CONSTRUCTION OR EXCAVATION, THE CONTRACTOR SHALL VERIFY THE LOCATION OF ALL UTILITIES BY CALLING:
J.U.L.I.E. * 1 - 8 0 0 - 8 9 2 - 0 1 2 3

* Joint Utilities Locating Information for Excavators.

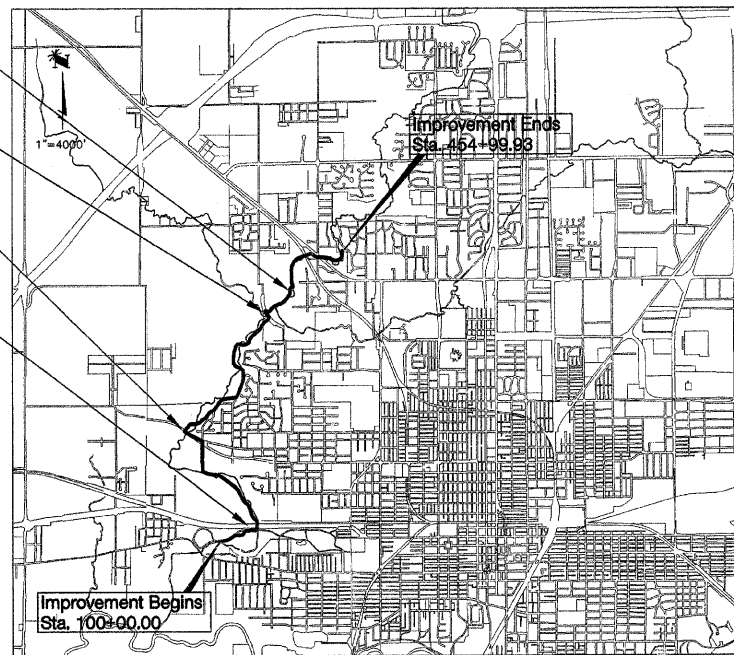


Station Equation
Sta. 416+11.61 BK=
Sta. 415+64.77 AHD

Sta. 378+69.23 BK=
Sta. 400+00.00 AHD

Sta. 260+26.38 BK=
Sta. 300+00.00 AHD

Sta. 117+81.82 BK=
Sta. 200+00.00 AHD



TOTAL LENGTH OF IMPROVEMENT = 21,224.20 FEET = 4.019 MILES
NET LENGTH OF IMPROVEMENT = 21,158.19 FEET = 4.007 MILES

DESIGN DESIGNATION

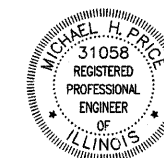
INDEX TO SHEETS
SEE SHEET NO. 2

I.D.O.T. STANDARDS

- 280001-04 TEMPORARY EROSION CONTROL SYSTEMS
- 285001-02 FABRIC FORMED CONCRETE REVETMENT MATS
- 424001-05 CURB RAMPS FOR SIDEWALKS
- 542301-02 PRECAST REINFORCED CONCRETE FLARED END SECTION
- 542311-01 GRATING FOR CONCRETE FLARED END SECTION
- 542401-01 METAL END SECTIONS FOR PIPE CULVERTS
- 602301-02 INLET, TYPE A
- 602401-02 MANHOLE, TYPE A
- 602601-02 PRECAST REINFORCED CONCRETE FLAT SLAB TOP
- 606001-04 CONCRETE CURB, TYPE B AND COMBINATION CONCRETE CURB AND GUTTER
- ~~630001-08 STEEL PLATE BEAM GUARDRAIL~~
- 631011-05 TRAFFIC BARRIER TERMINAL, TYPE 2
- 701901-01 TRAFFIC CONTROL DEVICES
- BLR 14-10 PCC PAVEMENT (NONREINFORCED)

UTILITIES

AMEREN IP 500 S. 27TH STREET DECATUR, IL 62521	GAS AND ELECTRIC	800.892.7715
SBC 990 SOUTHSIDE DRIVE DECATUR, IL 62521	TELEPHONE POLES, BOXES, CABLE	217.429.8596
INSIGHT COMMUNICATIONS 1275 N WATER STREET DECATUR, IL 62521	POLES, BOXES, CABLES	217.424.8474
CITY OF DECATUR #1 GARY K ANDERSON PLAZA DECATUR, IL 62523	SEWERS, WATER MAINS	217.424.2747
SANITARY DISTRICT OF DECATUR 501 S DIPPER LANE DECATUR, IL 62522	MANHOLES, SEWERS	217.422.6931



by *Michael H. Price*
date 02/17/2009
expires NOV.30.2009

STATE OF ILLINOIS DEPARTMENT OF TRANSPORTATION	
DECATUR PARK DISTRICT OF ILLINOIS, A MUNICIPAL CORPORATION	
APPROVED	<i>Feb 17</i> 2009 EXECUTIVE DIRECTOR
PASSED	<i>4-8</i> 2009 DISTRICT 7 ENGINEER OF LOCAL ROADS & STREETS
Releasing for Bid Based on Limited Review	<i>4-8</i> 2009 DEPUTY DIRECTOR OF HIGHWAYS, REGION 4 ENGINEER