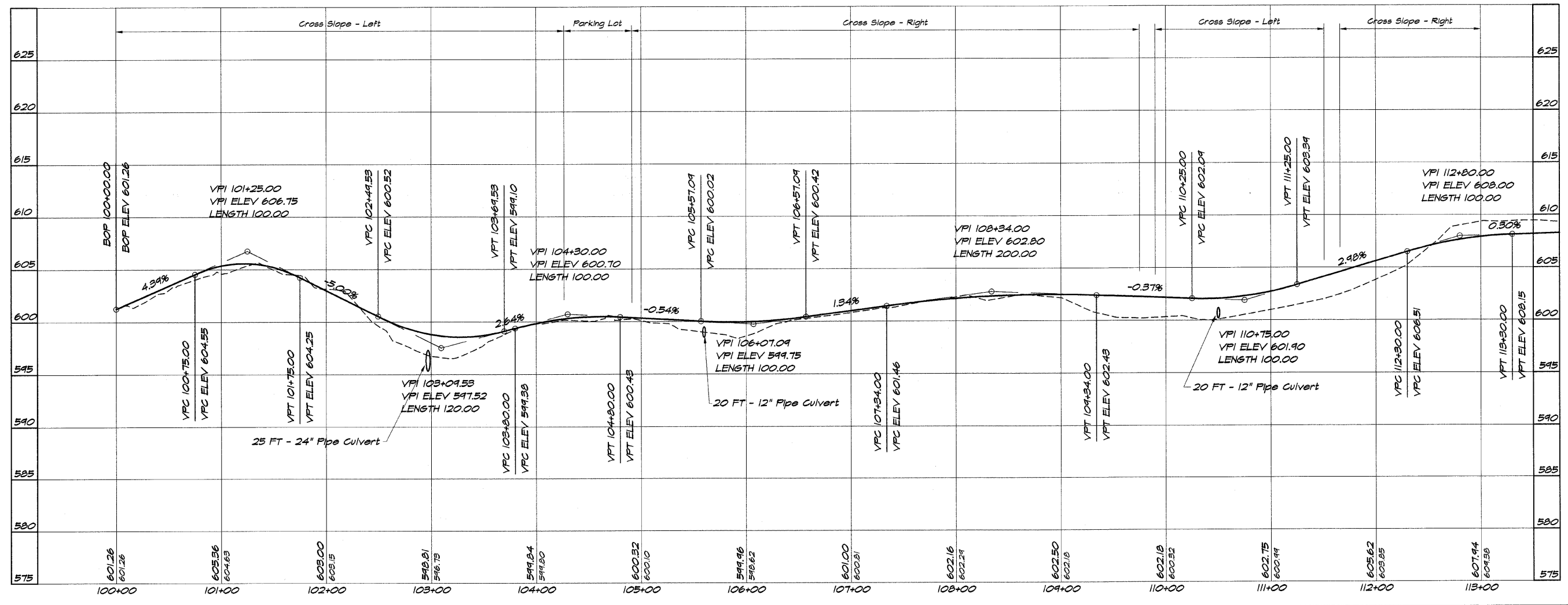
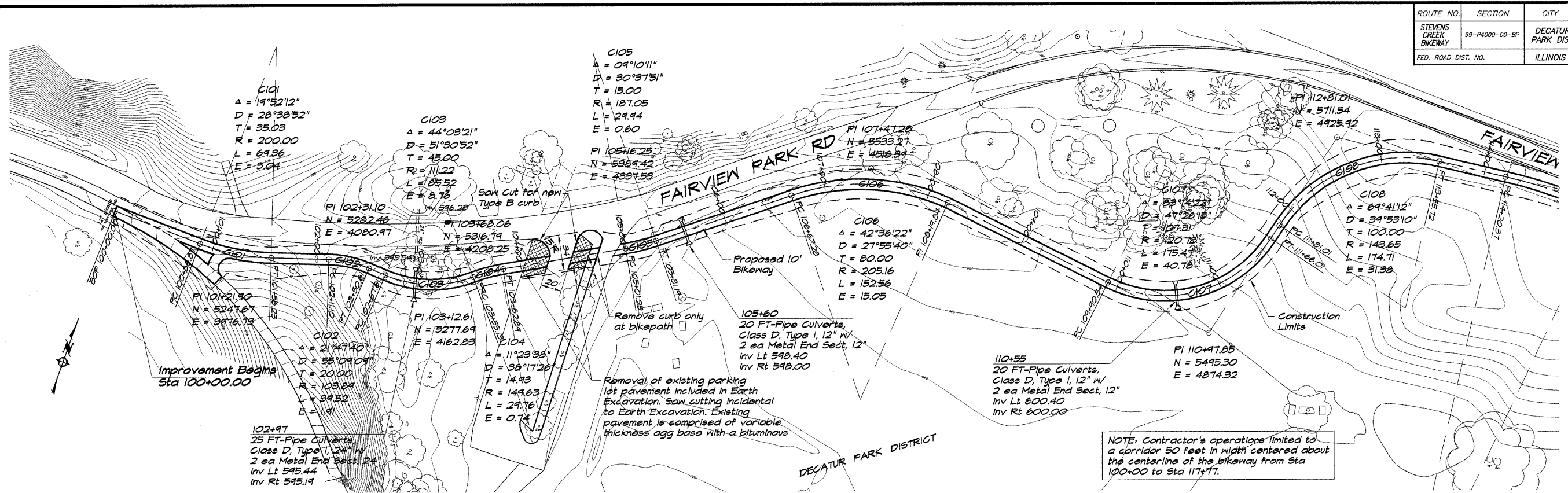


ROUTE NO.	SECTION	CITY	TOTAL SHEETS	SHEET NO.
STEVENS CREEK BIKEWAY	99-P4000-00-BP	DECATUR PARK DIST	145	6
FED. ROAD DIST. NO.		ILLINOIS	PROJECT TE-0007(27)	



BAINBRIDGE & ASSOCIATES, INC.
GBE
MILLARSKI
 Consulting Engineers
 1875 SOUTH WYCKOFF ROAD
 DECATUR, ILLINOIS
 License 194-071995

DESIGNED	SCALE	DATE	JOB NO.
DLW	1" = 50'	May 2002	99C044
DRAWN	DATE	JOB NO.	XXX
P Mills	May 2002	99C044	XXX

DECATUR PARK DISTRICT
STEVENS CREEK BIKEWAY - PHASE I
PLAN AND PROFILE
 STATION 100+00 TO 113+00