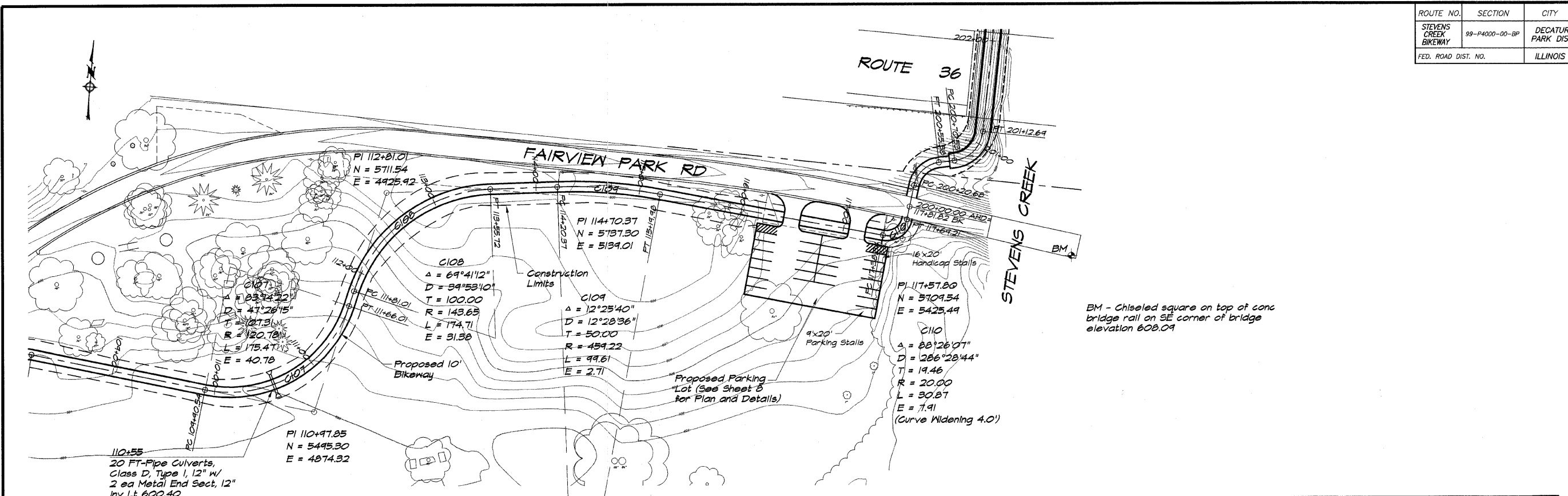
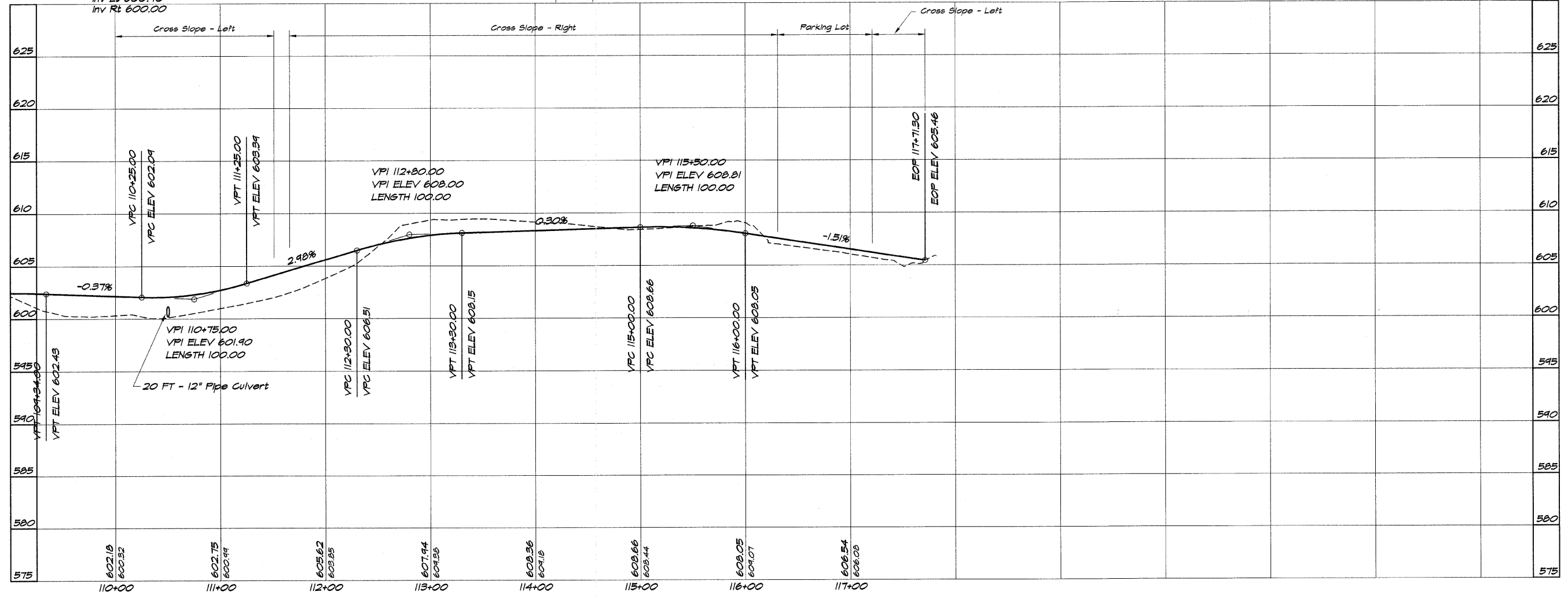


ROUTE NO.	SECTION	CITY	TOTAL SHEETS	SHEET NO.
STEVENS CREEK BIKEWAY	99-P4000-00-BP	DECATUR PARK DIST	145	7
FED. ROAD DIST. NO.	ILLINOIS		PROJECT TE-0007(27)	



BM - Chiseled square on top of conc bridge rail on SE corner of bridge elevation 608.09

20 FT-PIPE Culverts, Class D, Type 1, 12" w/ 2 ea Metal End Sect, 12" Inv Lt 600.40 Inv Rt 600.00



BAINBRIDGE & ASSOCIATES, INC.
 Consulting Engineers
GEB
MULANSKI
 110 SOUTH TAYLORVILLE ROAD
 DECATUR, ILLINOIS 62521
 Phone: (618) 401-1256

REVISIONS	NO.	BY	DATE

SCALE: 1" = 50'
 DATE: May 2002
 DRAWN: P. Mills
 FIELD BOOK: 509 No. 49049
 XXX

DECATUR PARK DISTRICT
STEVENS CREEK BIKEWAY - PHASE I
PLAN AND PROFILE
 STATION 110+00 TO 117+71.30