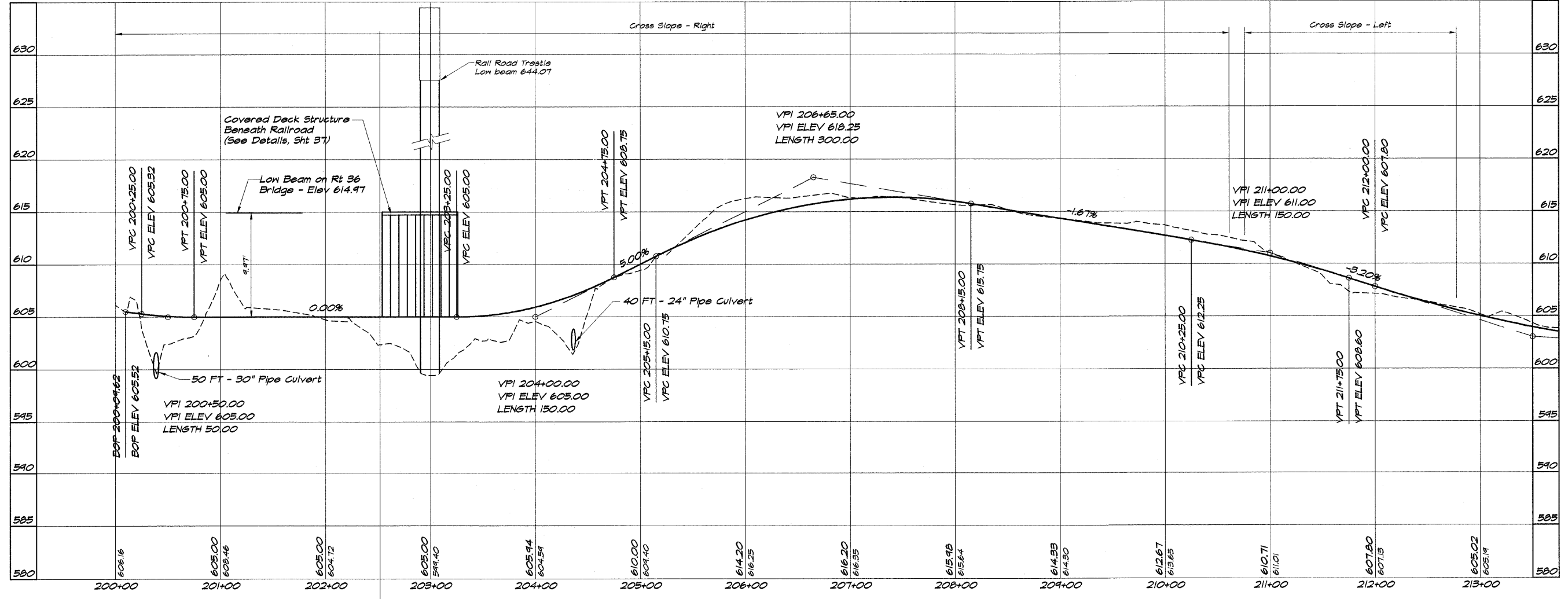
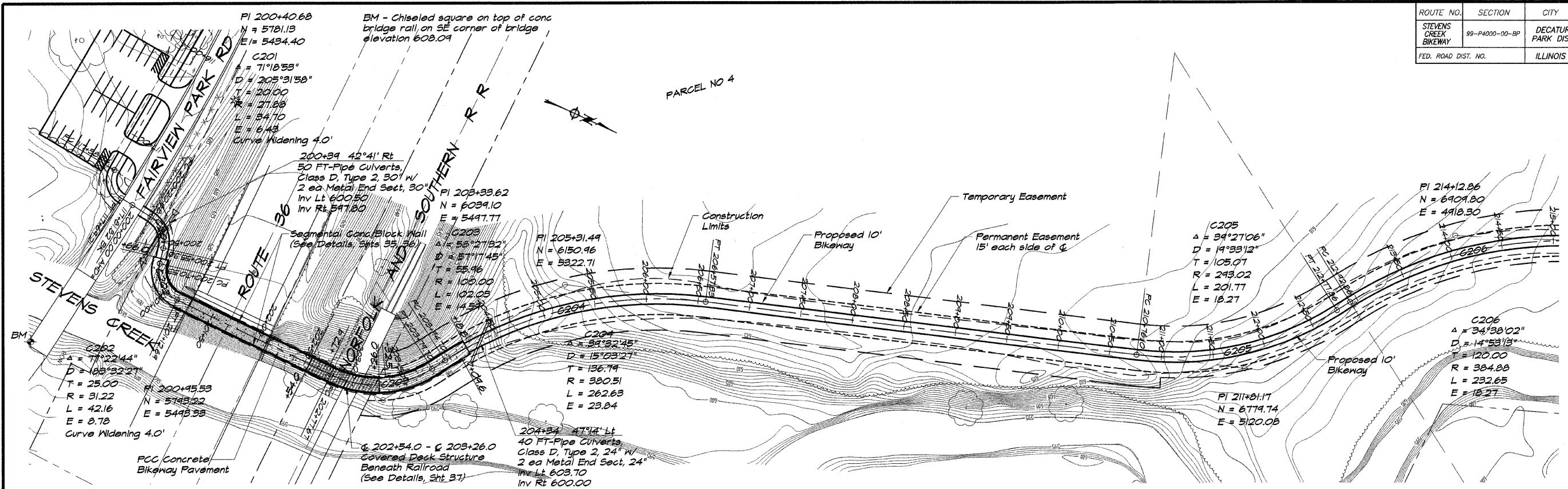


ROUTE NO.	SECTION	CITY	TOTAL SHEETS	SHEET NO.
STEVENS CREEK BIKEWAY	99-P4000-00-BP	DECATUR PARK DIST	145	9
FED. ROAD DIST. NO.	ILLINOIS	PROJECT	TE-0007(27)	



**BAINBRIDGE & ASSOCIATES, INC.**  
 Consulting Engineers  
 110 SOUTH TAYLORVILLE ROAD  
 DECATUR, ILLINOIS  
 62521-1596

REVISIONS	NO.	BY	DATE

SCALE: 1" = 50'  
 DATE: May 2002  
 DRAWN: P Mills  
 FIELD BOOK: XXXX  
 JOB NO.: 99C04

**DECATUR PARK DISTRICT**  
**STEVENS CREEK BIKEWAY - PHASE I**  
**PLAN AND PROFILE**  
 STATION 200+00.00 TO 213+00.00