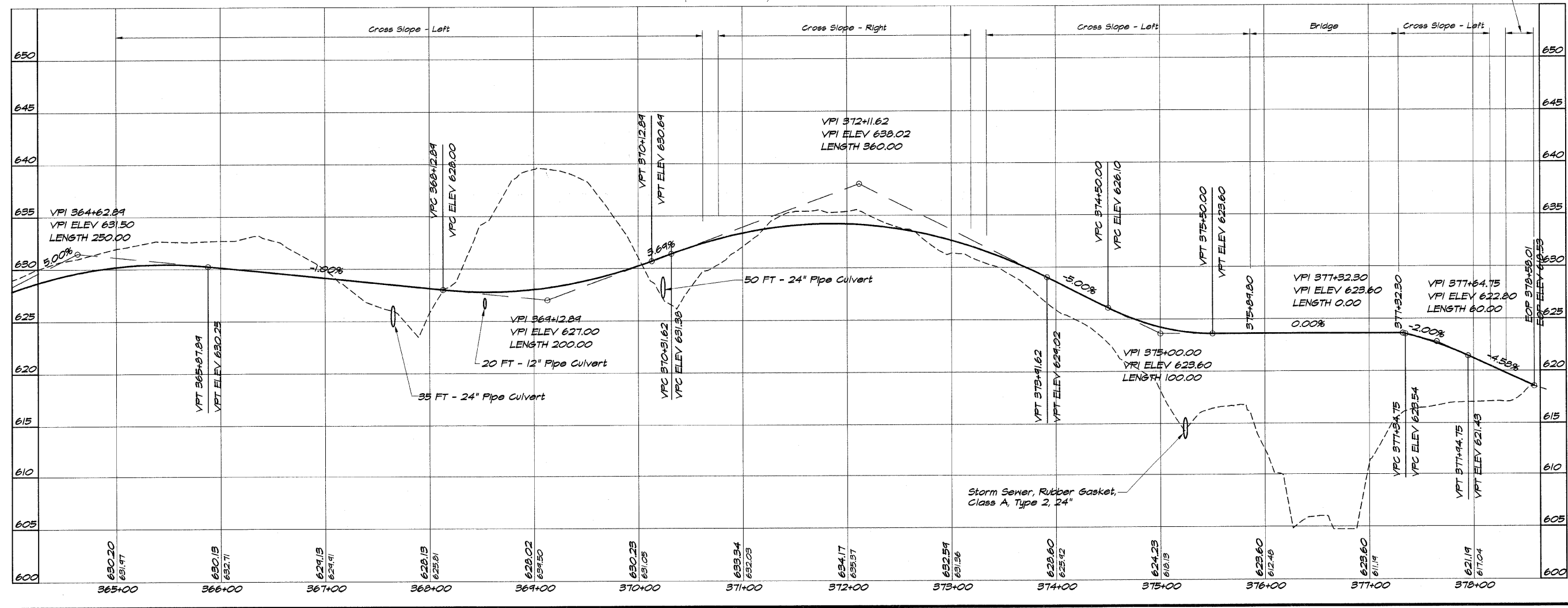
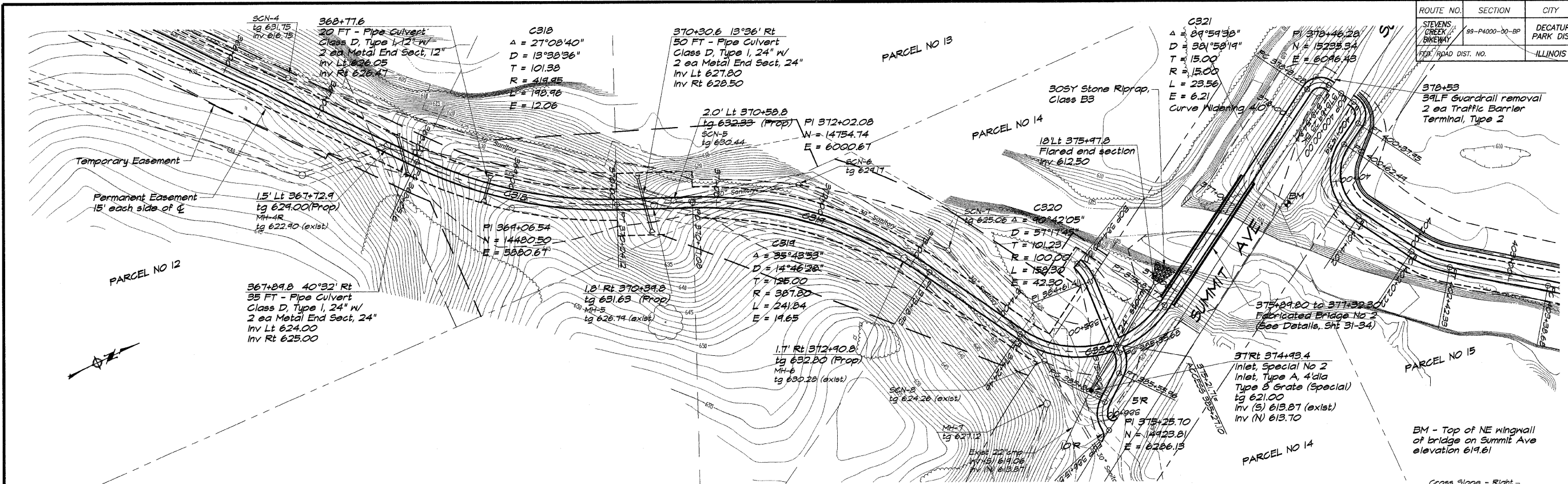


ROUTE NO.	SECTION	CITY	TOTAL SHEETS	SHEET NO.
STEVENS CREEK BIKEWAY	99-P4000-00-BP	DECATUR PARK DIST	145	21
FED. ROAD DIST. NO.			ILLINOIS PROJECT TE-0007(27)	



BAINBRIDGE & ASSOCIATES, INC.
GEE
MULLIKY
 Consulting Engineers
 100 SOUTH WASHINGTON ROAD
 DECATUR ILLINOIS 62521
 Phone: 618-401-2225

DESIGNED	SCALE	DATE	JOB NO.
MHP	1" = 50'	May 2002	99C044
DRAWN	DATE	FIELD BOOK	XXX
P. Mills	May 2002		

DECATUR PARK DISTRICT
STEVENS CREEK BIKEWAY - PHASE I
PLAN AND PROFILE
 STATION 365+00.00 TO 378+58.01