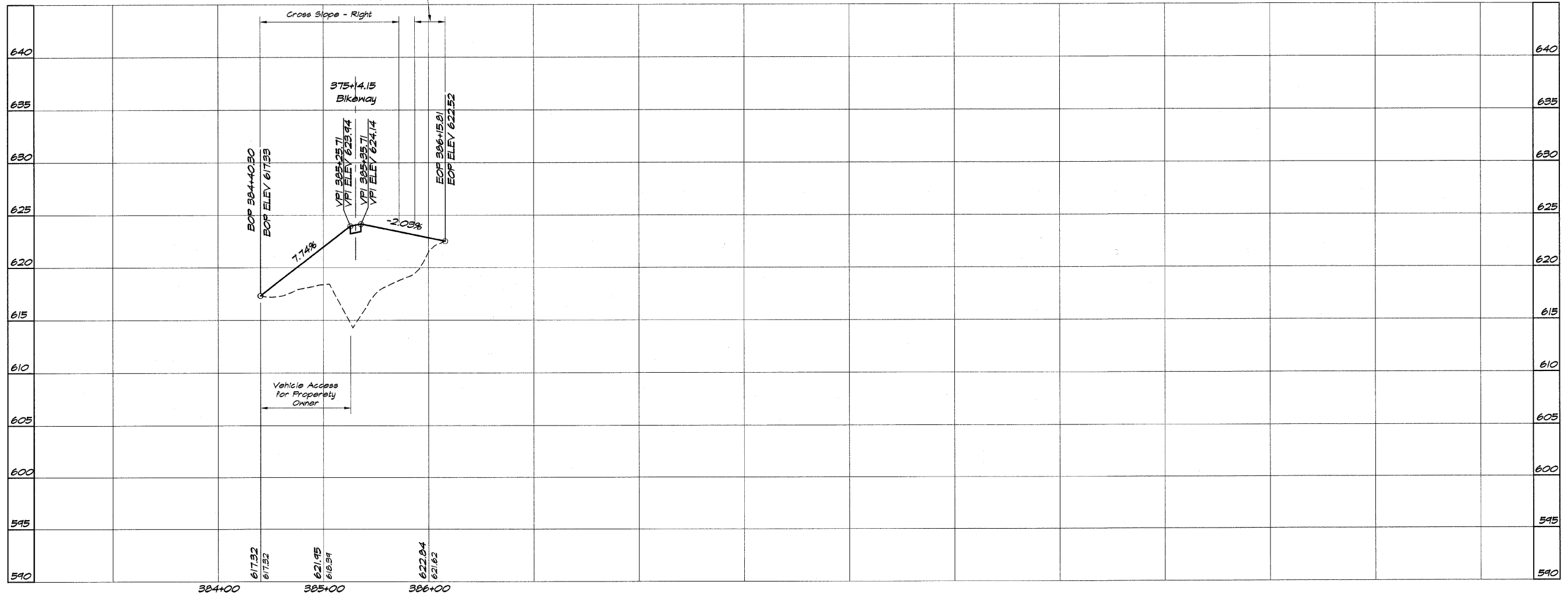


ROUTE NO.	SECTION	CITY	TOTAL SHEETS	SHEET NO.
STEVENS CREEK BIKEWAY	99-P4000-00-BP	DECATUR PARK DIST	145	22
FED. ROAD DIST. NO.	ILLINOIS		PROJECT TE-0007(27)	



**BAINBRIDGE & ASSOCIATES, INC.**  
 Consulting Engineers  
**GBB MULLENSKI**  
 100 SOUTH TAYLORVILLE ROAD  
 DECATUR, ILLINOIS  
 Since License 18-001258

DESIGNED	SCALE	REVISIONS
MHP	1" = 50'	NO. BY DATE
DRWN	DATE	
P	May 2002	
FIELD BOOK	JOB NO.	
XXX	410494	

**DECATUR PARK DISTRICT**  
**STEVENS CREEK BIKEWAY - PHASE I**  
**PLAN AND PROFILE**  
 STATION 384+40.30 TO 386+15.81