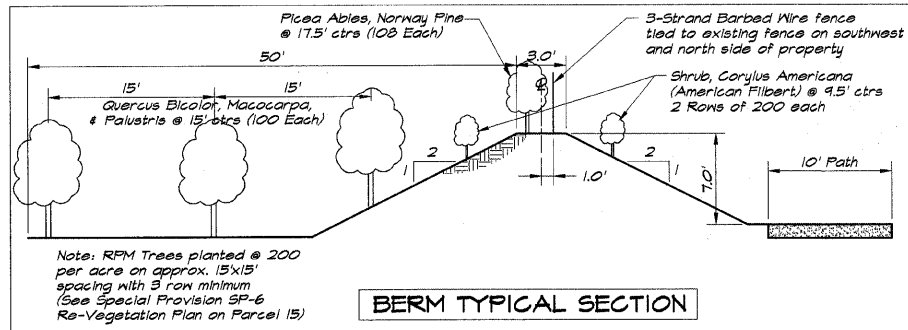


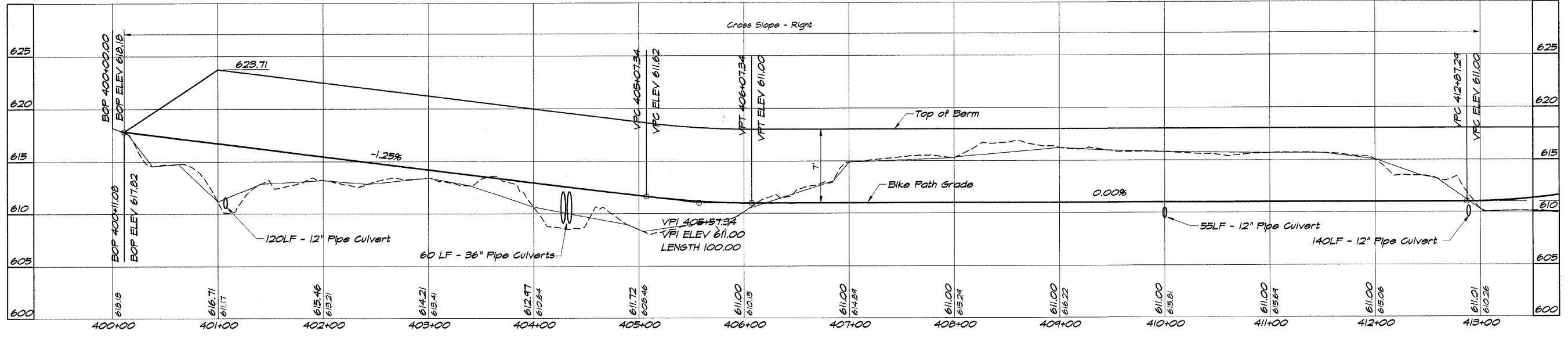
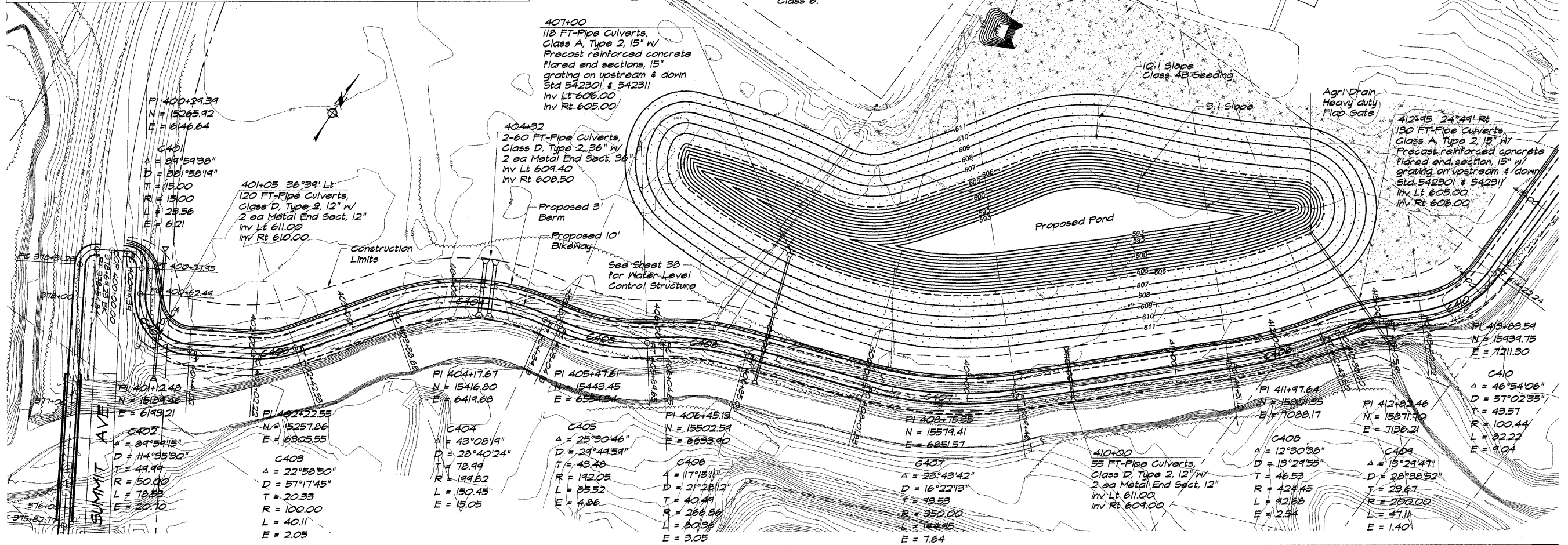
ROUTE NO.	SECTION	CITY	TOTAL SHEETS	SHEET NO.
STEVENS CREEK BIKEWAY	99-P4000-00-BP	DECATUR PARK DIST	145	23
FED. ROAD DIST. NO.		ILLINOIS	PROJECT	TE-00D(27)

**BAINBRIDGE & ASSOCIATES, INC.**  
 Consulting Engineers  
 170 SOUTH TAYLORVILLE ROAD  
 DECATUR, ILLINOIS 62521  
 Phone: (618) 281-1100



Seeding Class 4B (Modified)  
 Ladino Clover

Note: Remaining areas disturbed outside of Berm Area will be seeded with Class 6.



REVISIONS	NO.	BY	DATE

**DECATUR PARK DISTRICT**  
 STEVENS CREEK BIKEWAY - PHASE I  
 PLAN AND PROFILE  
 STATION 400+00.00 TO 413+00.00