

| ROUTE NO. | SECTION | CITY | TOTAL SHEETS | SHEET NO. |
|-----------------------|----------------|-------------------|--------------|---------------------|
| STEVENS CREEK BIKEWAY | 98-P4000-00-BP | DECATUR PARK DIST | 145 | 26 |
| FDL 8141151 | | ILLINOIS | | PROJECT TE-0007(27) |

BM - "M" in Mueller on fire hydrant at S side of Taylor Ave elevation 653.94

PI 492+81.80
N = 17763.48
E = 8480.78

C413B
Δ = 50°10'29"
D = 381°58'19"
T = 7.02
R = 15.00
L = 13.14
E = 1.56
Curve Widening 4.0'

Permanent Easement
15' each side of C

PI 490+82.79
N = 17626.28
E = 8636.54

C417A
Δ = 55°54'11"
D = 57°17'45"
T = 53.06
R = 100.00
L = 47.57
E = 13.21

442+82 42°37' Rt
35 FT-Pipe Culverts,
Class D, Type I, 12" w/
2 ea Metal End Sect, 12"
Inv Lt 613.52
Inv Rt 612.80

Temporary Easement
PI 445+96.86
N = 17494.17
E = 9017.53

Permanent Easement
15' each side of C

A.R. 452+59
3 ea- PCBC 12x7x15
Inv Lt 608.55
Inv Rt 608.50

C419
Δ = 89°45'26"
D = 21°31'47"
T = 265.00
R = 286.12
L = 416.90
E = 109.44

C417
Δ = 47°59'33"
D = 34°43'29"
T = 73.45
R = 125.00
L = 138.21
E = 15.61

PI 439+33.47
N = 17579.31
E = 8350.87

441+83
20 FT-Pipe Culverts,
Class D, Type I, 12" w/
2 ea Metal End Sect, 12"
Inv Lt 613.84
Inv Rt 613.42

Grade shall be drain
(Include in Earth Excavation)

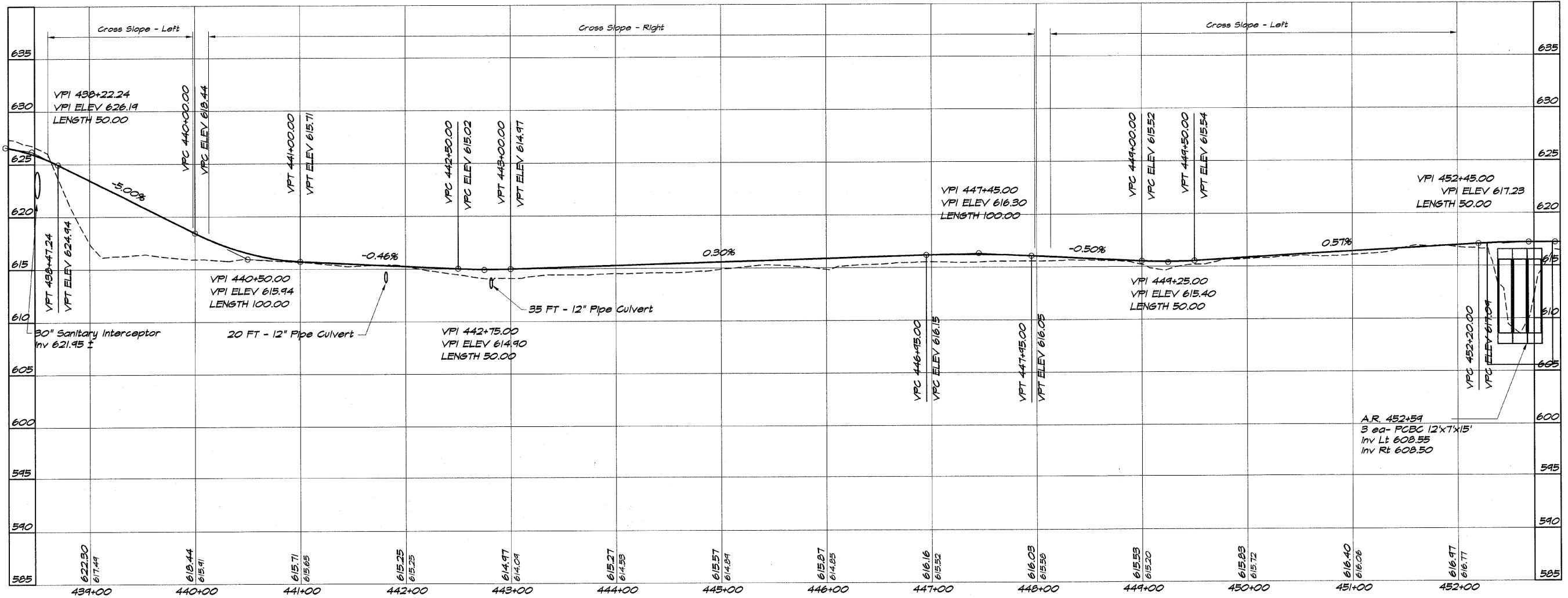
C418
Δ = 15°39'06"
D = 15°44'54"
T = 50.00
R = 368.79
L = 99.38
E = 3.42

BM - Chiseled square SM corner of pump station at Susan Drive and Green Oak Drive elevation 625.61

PI 450+78.40
N = 17306.32
E = 9461.60

BATHBRIDGE & ASSOCIATES, INC.
Consulting Engineers
GHE
MILWAUKEE
3800 W. FARMVILLE ROAD
DECATUR ILLINOIS
Illinois License 184-002285

| DESIGNED | SCALE | REVISIONS |
|------------|----------|-------------|
| DLM | 1" = 50' | NO. BY DATE |
| P. Mills | May 2002 | |
| Field Book | Job No. | |
| XXX | 99C094 | |



DECATUR PARK DISTRICT
STEVENS CREEK BIKEWAY - PHASE I
PLAN AND PROFILE
STATION 439+00.00 TO 452+00.00