

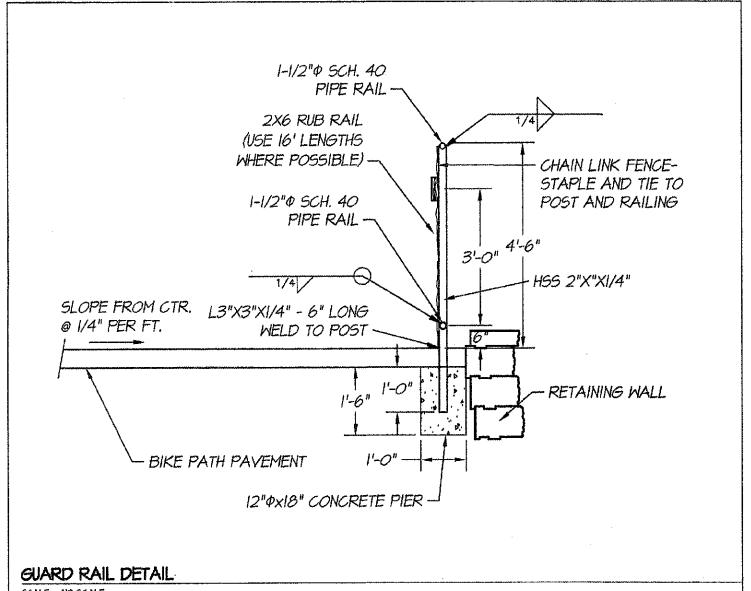
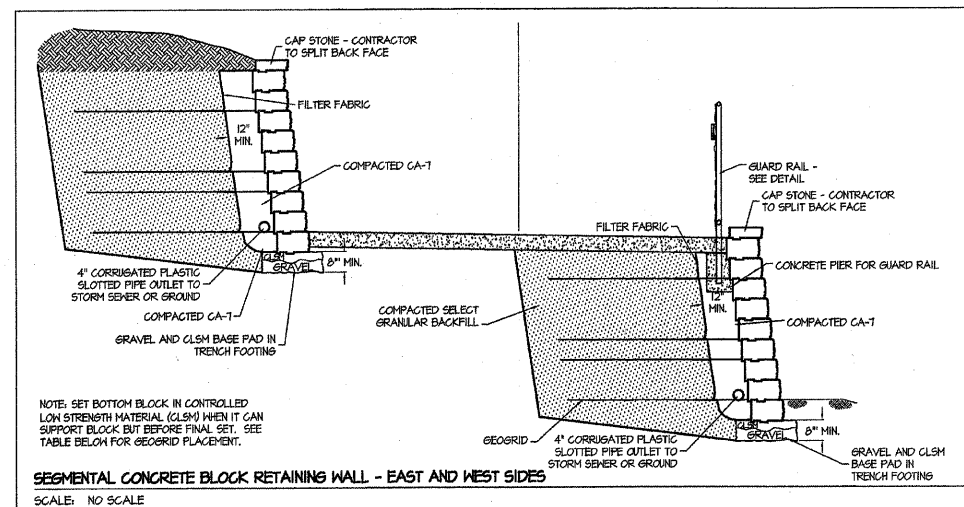
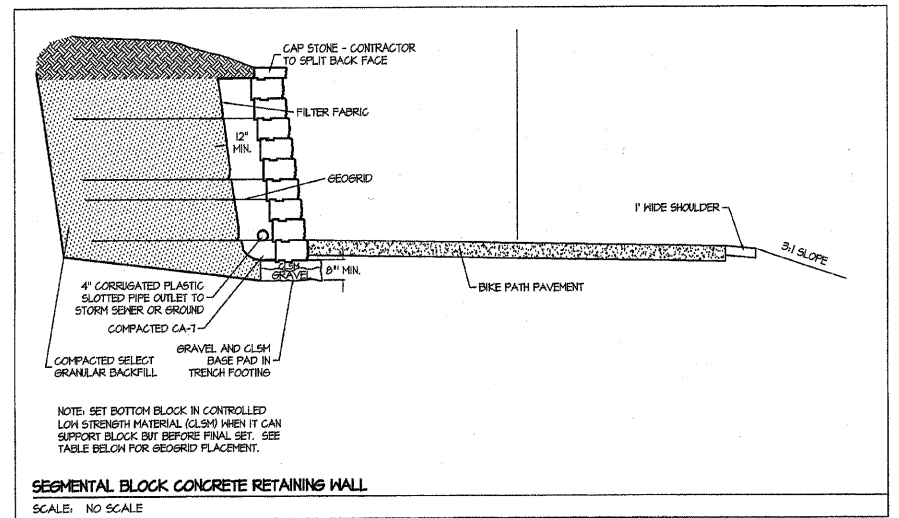
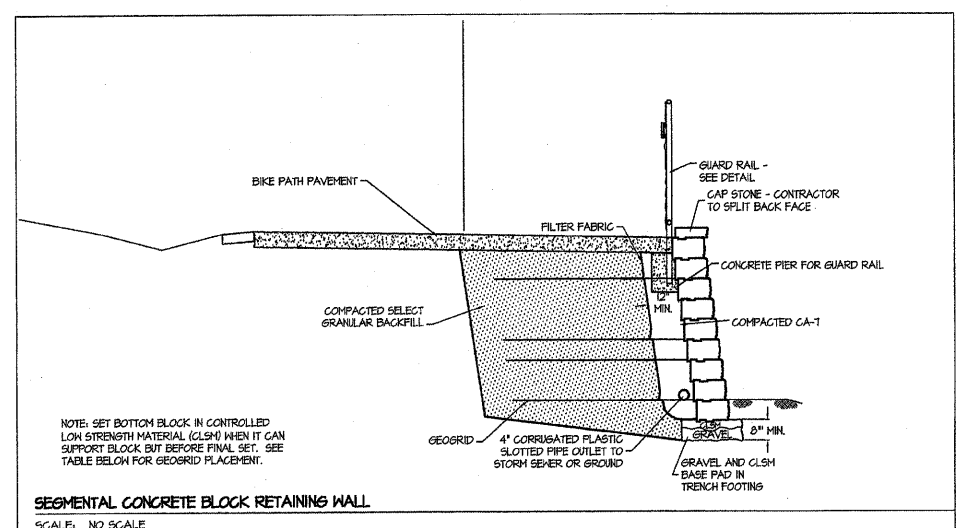
ROUTE NO.	SECTION	CITY	TOTAL SHEETS	SHEET NO.
STEVENS CREEK BIKEWAY	99-P4000-00-BP	DECATUR PARK DIST	145	36
FED. ROAD DIST. NO.		ILLINOIS	PROJECT	TE-0007(27)

BARNBRIDGE G&A ASSOCIATES, INC.
 Consulting Engineers
 1670 SOUTH TAYLORVILLE ROAD
 DECATUR, ILLINOIS 62526
 Phone: 618-444-1800

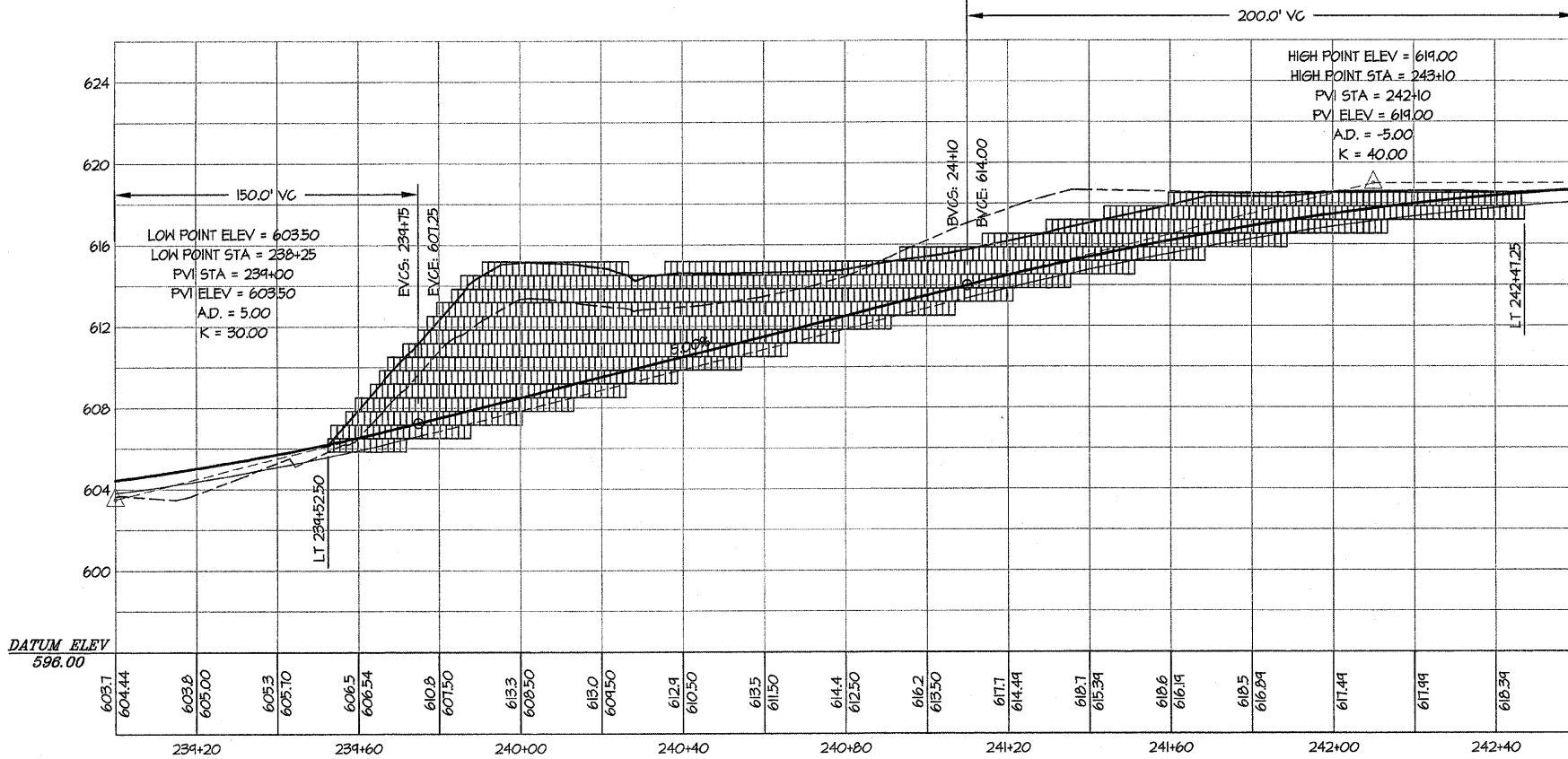
REVISIONS	NO.	BY	DATE
DESIGNED	JLS		
DRAWN	AKL		
FIELD BOOK	XXX		

DECATUR PARK DISTRICT
 STEVENS CREEK BIKEWAY - PHASE I
 SEGMENTAL CONCRETE BLOCK WALL
 SECTIONS AND PROFILES

ENGINEERS, INC.
 CONSULTING ENGINEERS
 1670 SOUTH TAYLORVILLE ROAD
 DECATUR, ILLINOIS 62526
 PROFESSIONAL DESIGN FIRM #114-001111 OFFICE 618/444-1800



NOTE: The cut in the vicinity of the abutment MUST be backfilled within 24 hours of the cut.



WALL REINFORCEMENT TABLE

Total Wall Height	Exposed Wall Height	Depth Below Grade	Total # of Courses	Type of Geogrid	Length of Geogrid	GEOGRID PLACEMENT				Total Geogrid Layers
						Distance up from Foundation or Leveling Pad				
H	EW/H	DBS	NC	B	LG	1'-4"	3'-4"	DP	NL	
4'-8"	4'	0'-8"	7	B	6'-0"	1'-4"	3'-4"		2	
6'-8"	6'	0'-8"	10	B	7'-0"	0'-8"	2'-0"	3'-4"	4	
9'-4"	8'	1'-4"	14	B	9'-0"	0'-8"	2'-0"	3'-4"	5	

NOTE: THE WALL REINFORCEMENT TABLE IS A MINIMUM. ADDITIONAL WALL REINFORCEMENT MAY BE REQUIRED BASED ON SEGMENTAL CONCRETE BLOCK WALL TYP. CONTRACTOR TO SUPPLY SUBMITTAL DETAILING DESIGN IN ACCORDANCE WITH SPECIFICATIONS.

I certify that to the best of my knowledge, information and belief, this bridge design is structurally adequate for the design loading shown on the plans. The design is an economical one for the style of structure and complies with requirements for the current "AASHTO" standard Specifications for Highway Bridges.

Jerrold Shaffer
 JERROLD SHAFFER
 ILLINOIS STRUCTURAL ENGINEER NO. 81-4445
 LICENSE EXPIRES: 11/30/2010