



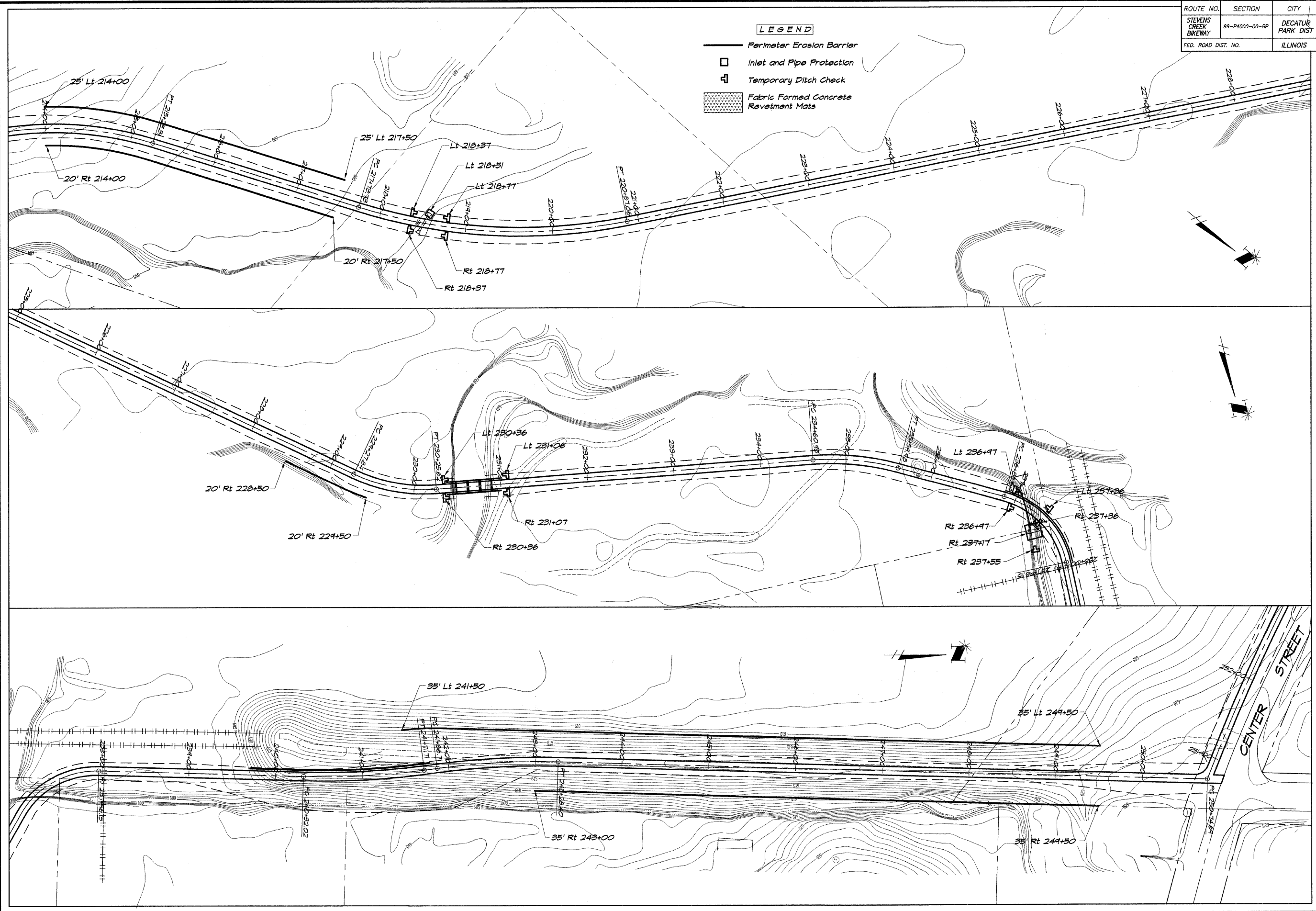


| | | | | |
|-----------------------|----------------|-------------------|---------------------|-----------|
| ROUTE NO. | SECTION | CITY | TOTAL SHEETS | SHEET NO. |
| STEVENS CREEK BIKEWAY | 89-P4000-00-BP | DECATUR PARK DIST | 145 | 40 |
| FED. ROAD DIST. NO. | ILLINOIS | | PROJECT TE-00D7(27) | |

LEGEND

-  Perimeter Erosion Barrier
-  Inlet and Pipe Protection
-  Temporary Ditch Check
-  Fabric Formed Concrete Revetment Mats



BAINBRIDGE & ASSOCIATES, INC.
 Consulting Engineers
GEB
MULAKSKI
 100 SOUTH TAYLORVILLE ROAD
 DECATUR ILLINOIS
 60155-1400

| REVISIONS | NO. | BY | DATE |
|-----------|-----|----|------|
| | | | |
| | | | |

| | | | |
|------------|---------|----------|----------|
| DESIGNED | MHP | SCALE | 1" = 50' |
| DRAWN | P Mills | DATE | May 2002 |
| FIELD BOOK | XXX | SUR. NO. | 44049 |

DECATUR PARK DISTRICT
 STEVENS CREEK BIKEWAY - PHASE I
 EROSION CONTROL PLAN