



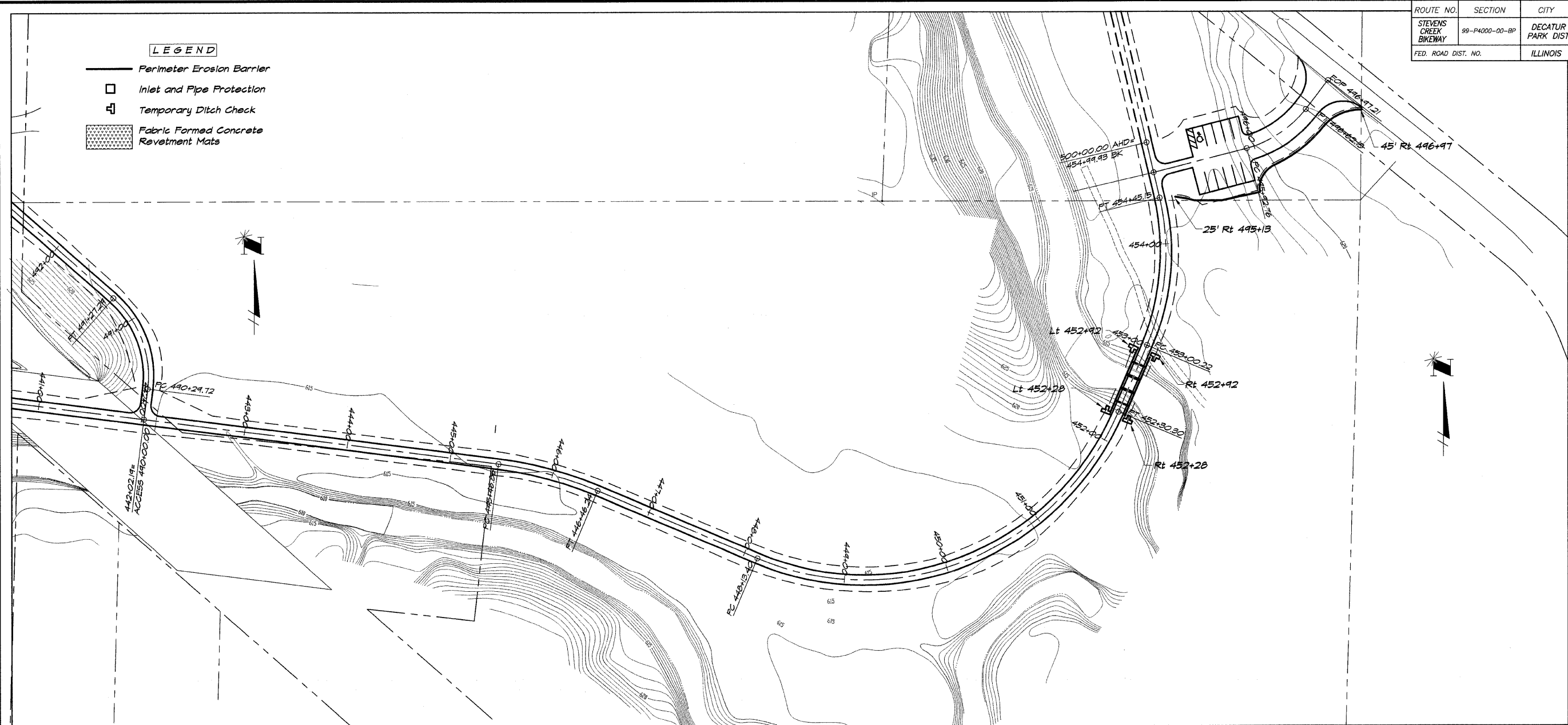


ROUTE NO.	SECTION	CITY	TOTAL SHEETS	SHEET NO.
STEVENS CREEK BIKEWAY	89-P400-00-BP	DECATUR PARK DIST	145	45
FED. ROAD DIST. NO.	ILLINOIS		PROJECT TE-007(27)	

LEGEND

-  Perimeter Erosion Barrier
-  Inlet and Pipe Protection
-  Temporary Ditch Check
-  Fabric Formed Concrete Revetment Mats



BAINBRIDGE GEB MILLANSKI & ASSOCIATES, INC.
 Consulting Engineers
 180 SOUTH TAYLORVILLE ROAD
 DECATUR, ILLINOIS
 PHONE NUMBER 184-0728

DESIGNED	SCALE	REVISIONS
MHP	1" = 50'	NO. BY DATE
Drawn	DATE	
P m/l/s	May 2002	
FIELD BOOK	JOB NO.	
XXX	99099	

DECATUR PARK DISTRICT
 STEVENS CREEK BIKEWAY - PHASE I
 EROSION CONTROL PLAN