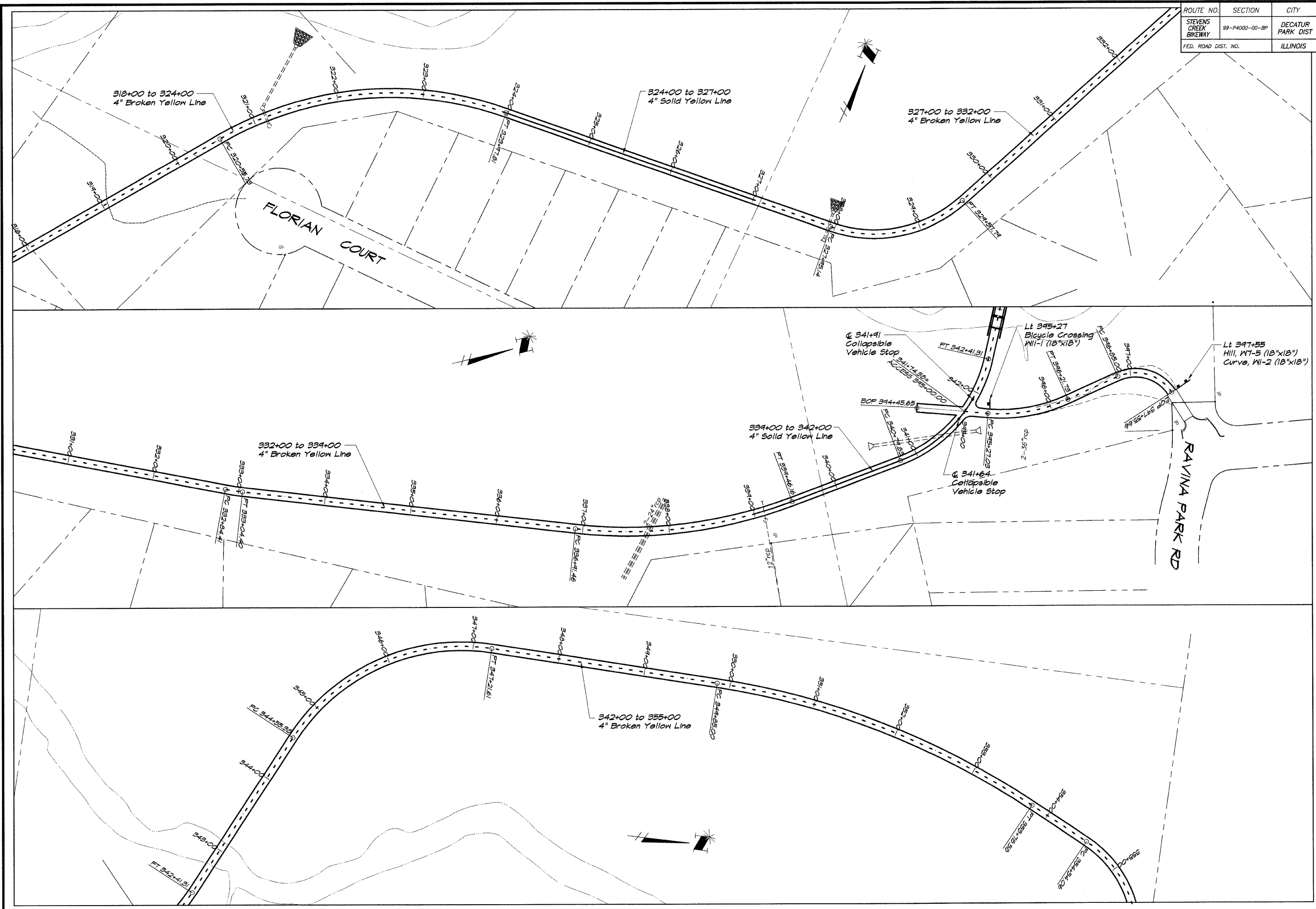


ROUTE NO.	SECTION	CITY	TOTAL SHEETS	SHEET NO.
STEVENS CREEK BIKEWAY	99-P4000-00-BP	DECATUR PARK DIST	145	49
FED. ROAD DIST. NO.		ILLINOIS	PROJECT TE-00D7(27)	



BATNEBRIDGE & ASSOCIATES, INC.
GBB
MILWAUKEE
 Consulting Engineers
 1070 SOUTH TAYLORVILLE ROAD
 DECATUR ILLINOIS
 60155-1506

REVISIONS	NO.	BY	DATE

DESIGNED	MHP	SCALE	1" = 50'
DRAWN	P	DATE	May 2002
FIELD BOOK	XXXX	JOB NO.	990497

DECATUR PARK DISTRICT
STEVENS CREEK BIKEWAY - PHASE I
PAVEMENT MARKING AND SIGNING PLAN