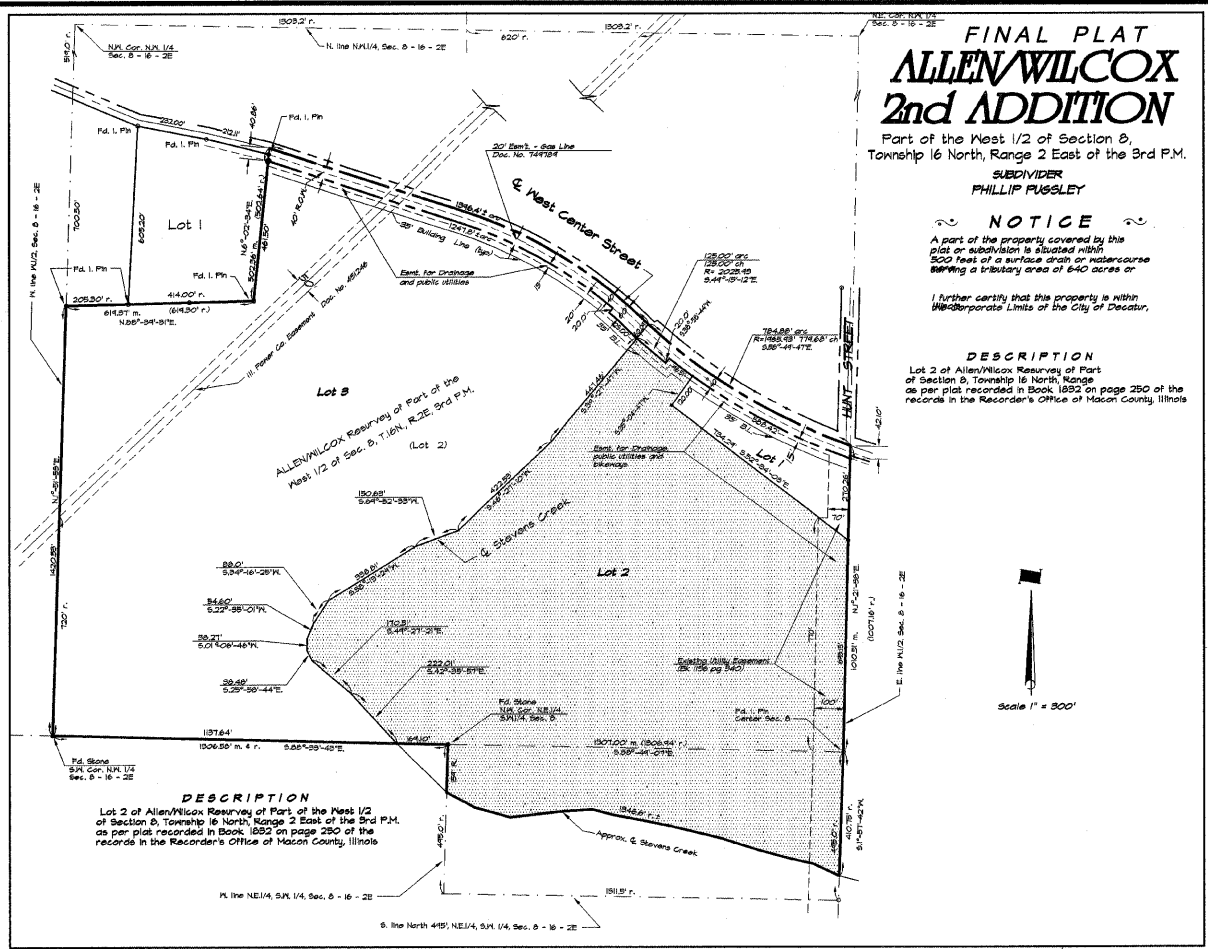


ROUTE NO.	SECTION	CITY	TOTAL SHEETS	SHEET NO.
STEVENS CREEK BIKEWAY	99-P4000-00-BP	DECATUR PARK DIST	145	137
FED. ROAD DIST. NO.		ILLINOIS	PROJECT TE-0007(27)	



**FINAL PLAT
ALLEN WILCOX
2nd ADDITION**

Part of the West 1/2 of Section 8,
Township 16 North, Range 2 East of the 3rd P.M.

SUBDIVIDER
PHILLIP PUGSLEY

NOTICE

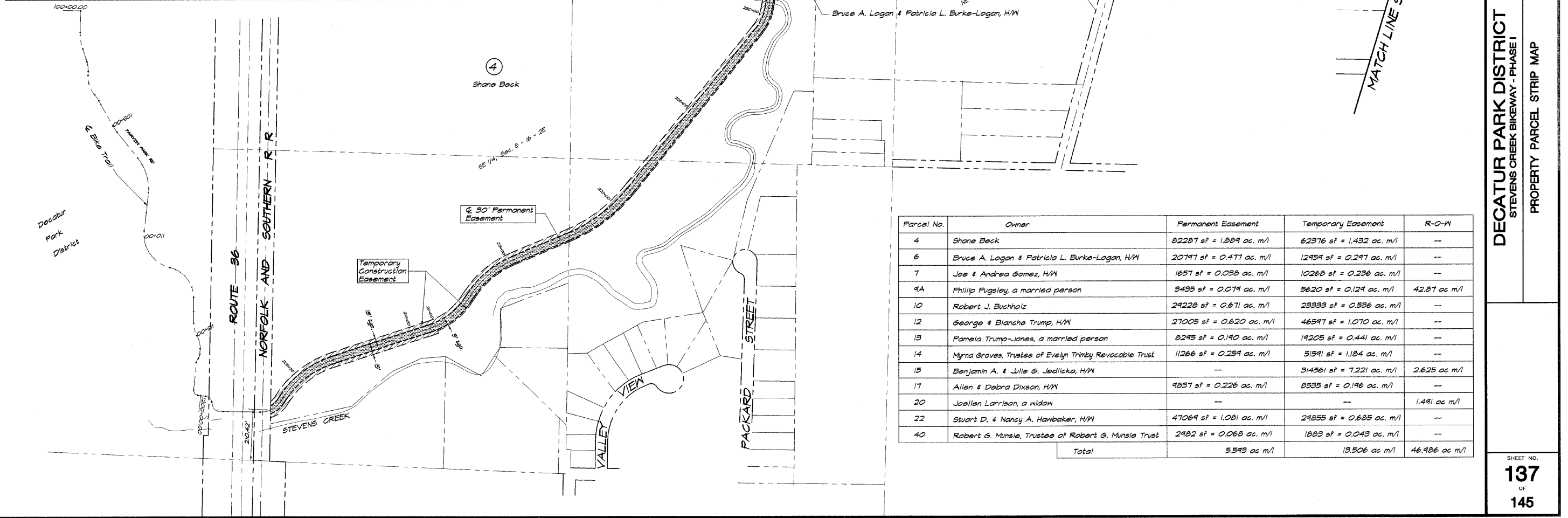
A part of the property covered by this plat or subdivision is situated within 500 feet of a surface drain or watercourse forming a tributary area of 640 acres or more.

I further certify that this property is within the corporate limits of the City of Decatur.

DESCRIPTION

Lot 2 of Allen Wilcox Resurvey of Part of Section 8, Township 16 North, Range 2 East of the 3rd P.M. as per plat recorded in Book 1892 on page 250 of the records in the Recorder's Office of Mason County, Illinois.

DESCRIPTION
Lot 2 of Allen Wilcox Resurvey of Part of the West 1/2 of Section 8, Township 16 North, Range 2 East of the 3rd P.M. as per plat recorded in Book 1892 on page 250 of the records in the Recorder's Office of Mason County, Illinois.



Parcel No.	Owner	Permanent Easement	Temporary Easement	R-O-W
4	Shane Beck	82287 sf = 1.889 ac. m/l	62376 sf = 1.432 ac. m/l	--
6	Bruce A. Logan & Patricia L. Burke-Logan, H/W	20797 sf = 0.477 ac. m/l	12959 sf = 0.297 ac. m/l	--
7	Joe & Andrea Gomez, H/W	1657 sf = 0.038 ac. m/l	10268 sf = 0.236 ac. m/l	--
9A	Phillip Pugsley, a married person	3435 sf = 0.079 ac. m/l	5620 sf = 0.129 ac. m/l	42.87 ac m/l
10	Robert J. Buchholz	29228 sf = 0.671 ac. m/l	23333 sf = 0.536 ac. m/l	--
12	George & Blanche Trump, H/W	27005 sf = 0.620 ac. m/l	46597 sf = 1.070 ac. m/l	--
13	Pamela Trump-Jones, a married person	8295 sf = 0.190 ac. m/l	19205 sf = 0.441 ac. m/l	--
14	Myrna Groves, Trustee of Evelyn Trinity Revocable Trust	11266 sf = 0.259 ac. m/l	51591 sf = 1.184 ac. m/l	--
15	Benjamin A. & Julie S. Jedlicka, H/W	--	314561 sf = 7.221 ac. m/l	2.625 ac m/l
17	Allen & Debra Dixon, H/W	9897 sf = 0.226 ac. m/l	8535 sf = 0.196 ac. m/l	--
20	Joellen Larrison, a widow	--	--	1.491 ac m/l
22	Stuart D. & Nancy A. Hanbaker, H/W	47069 sf = 1.081 ac. m/l	29855 sf = 0.685 ac. m/l	--
40	Robert G. Munsie, Trustee of Robert G. Munsie Trust	2982 sf = 0.068 ac. m/l	1883 sf = 0.043 ac. m/l	--
Total		5,593 ac m/l	13,506 ac m/l	46,986 ac m/l

BAINBRIDGE & ASSOCIATES, INC.
Civil Engineers
GBE
MILWAUKEE CONSULTING ENGINEERS
DECATUR ILLINOIS
Book License 184001286

REVISIONS

NO.	BY	DATE
1		
2		
3		
4		
5		
6		
7		
8		
9		
10		

SCALE: 1" = 200'
DESIGNED: MJP
DRAWN: L. Jenkins
FIELD BOOK NO.: 990899
DATE: Feb. 2004
JOB NO.: XXX

**DECATUR PARK DISTRICT
STEVENS CREEK BIKEWAY - PHASE I
PROPERTY PARCEL STRIP MAP**