

HORIZONTAL CONTROL COORDINATES

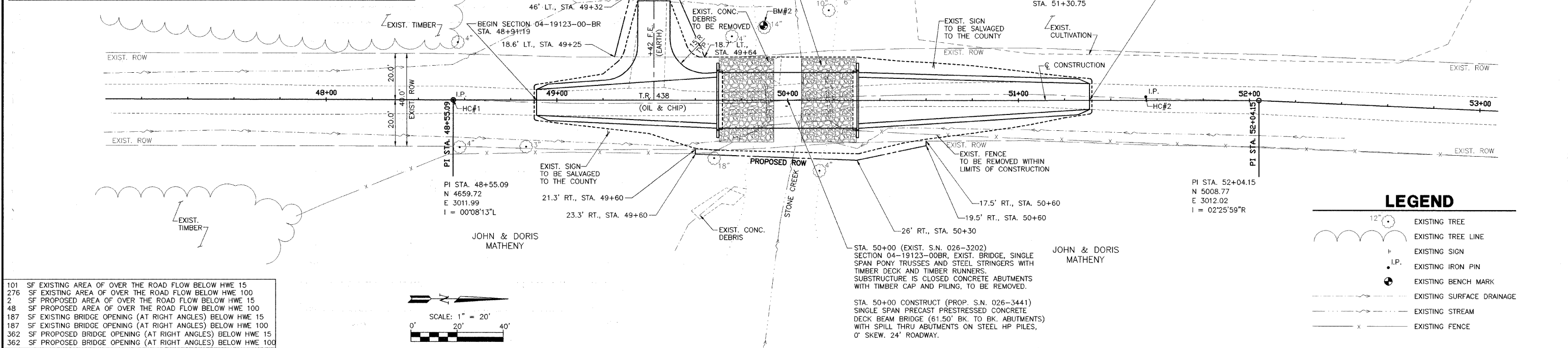
POINT	LOCATION	N. COOR.	E. COOR.	ELEV.
HC#1 (IRON PIN)	Q STA. 48+55.09	4659.72	3011.99	551.29
HC#2 (IRON PIN)	1.56' LT., STA. 51+55.09	4959.72	3010.46	547.45

ROUTE NO.	SECTION	COUNTY	TOTAL SHEETS	SHEET NO.
TR 438	04-19123-00-BR	FAYETTE	13	3

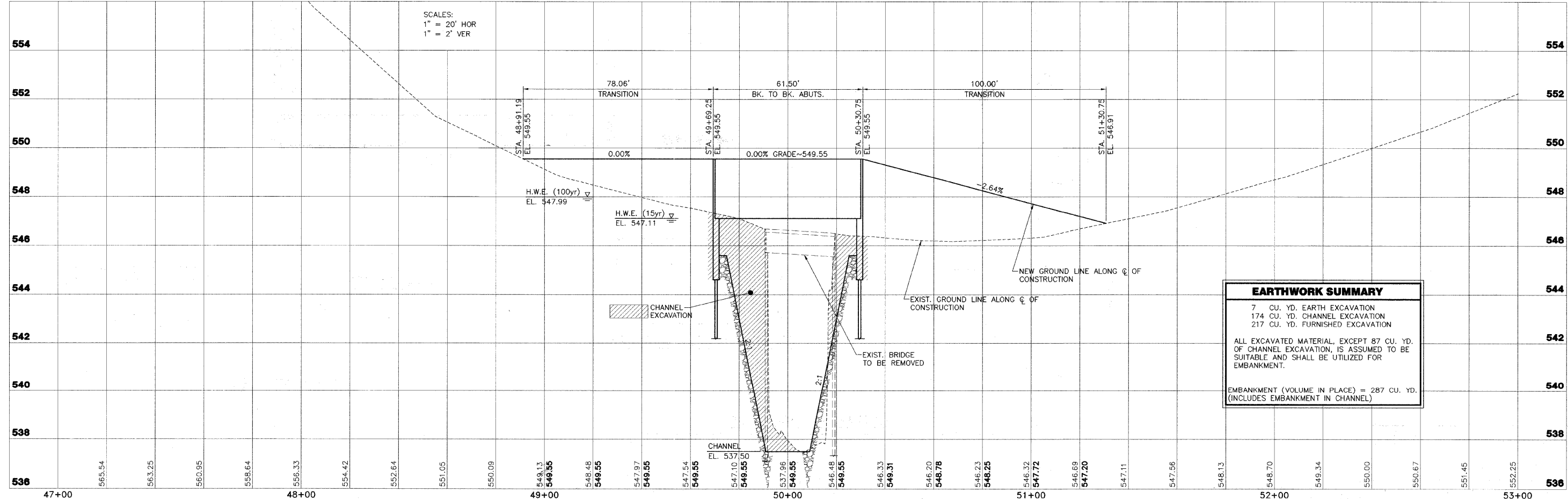
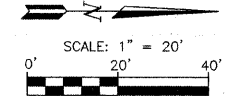
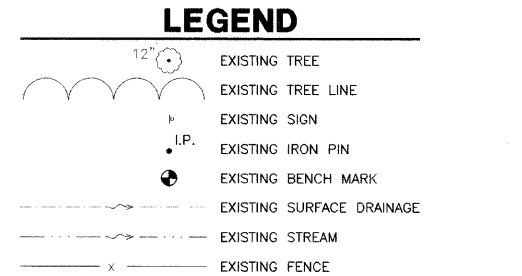
BENCH MARK COORDINATES

POINT	LOCATION	ELEV.
BM#1 (R.R. SPIKE IN 12" TREE)	48.2' LT., STA. 50+28.86	548.02
BM#2 (R.R. SPIKE IN 14" TREE)	32.2' LT., STA. 49+89.55	544.49

CONTRACT NO. 95567
 SEEDING CLASS 2 (SPECIAL)
 STA. 48+91.19 TO STA. 51+30.75 = 0.1 ACRE
 PROPOSED ROW
 0.011 ACRE
 TEMPORARY USE PERMIT
 0.019 ACRE



- 101 SF EXISTING AREA OF OVER THE ROAD FLOW BELOW HWE 15
- 276 SF EXISTING AREA OF OVER THE ROAD FLOW BELOW HWE 100
- 2 SF PROPOSED AREA OF OVER THE ROAD FLOW BELOW HWE 15
- 48 SF PROPOSED AREA OF OVER THE ROAD FLOW BELOW HWE 100
- 187 SF EXISTING BRIDGE OPENING (AT RIGHT ANGLES) BELOW HWE 15
- 187 SF EXISTING BRIDGE OPENING (AT RIGHT ANGLES) BELOW HWE 100
- 362 SF PROPOSED BRIDGE OPENING (AT RIGHT ANGLES) BELOW HWE 15
- 362 SF PROPOSED BRIDGE OPENING (AT RIGHT ANGLES) BELOW HWE 100



EARTHWORK SUMMARY

7 CU. YD. EARTH EXCAVATION	
174 CU. YD. CHANNEL EXCAVATION	
217 CU. YD. FURNISHED EXCAVATION	
ALL EXCAVATED MATERIAL, EXCEPT 87 CU. YD. OF CHANNEL EXCAVATION, IS ASSUMED TO BE SUITABLE AND SHALL BE UTILIZED FOR EMBANKMENT.	
EMBANKMENT (VOLUME IN PLACE) = 287 CU. YD. (INCLUDES EMBANKMENT IN CHANNEL)	

STS AECOM 2524 S. Broadway Salem, IL 62881 www.sts.aecom.com Copyright © 2008, by STS	TR 438, SECTION 04-19123-00-BR WHEATLAND ROAD DISTRICT FAYETTE COUNTY, ILLINOIS	PLAN AND PROFILE STA. 47+00 TO STA. 53+00		SURVEY: JAS DESIGN: MRQ DRAWN: BLT, JSD	CHECKED: APPROVED:	DATE: 12/15/08 REVISED: JOB NO. 200701116
		STS AECOM		PLAN AND PROFILE STA. 47+00 TO STA. 53+00		CHECKED: APPROVED: