

B.M. - B.M. #1 R.R. spike in Power Pole, 34.6' RT., STA. 48+15.2, EL. 566.59
 B.M. #2 R.R. spike in Power Pole, 29.4' RT., STA. 50+90.7, EL. 570.97

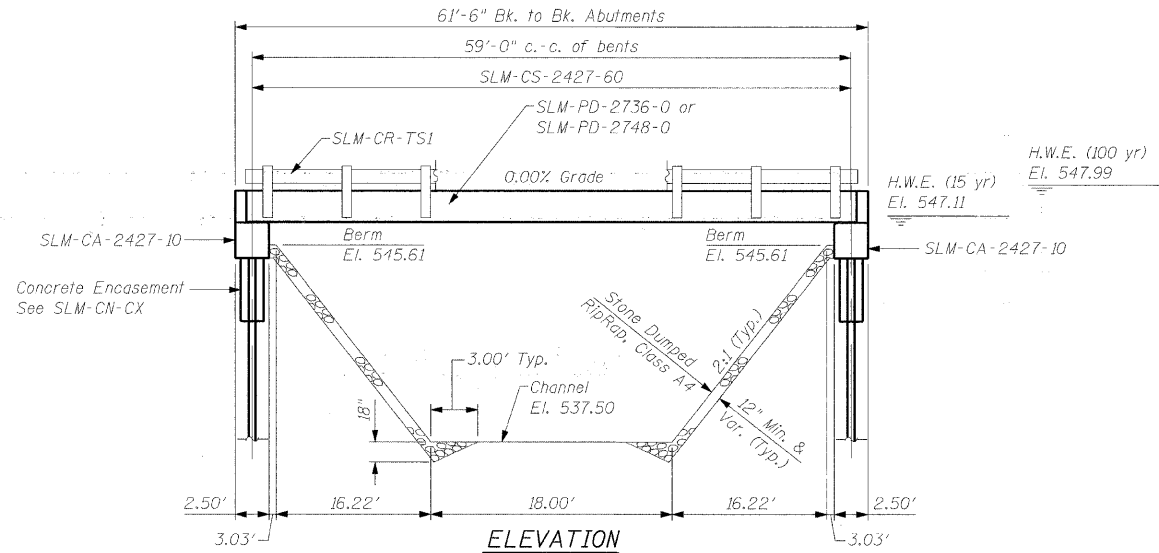
STATE OF ILLINOIS
 DEPARTMENT OF TRANSPORTATION

ROUTE NO.	SECTION	COUNTY	TOTAL SHEETS	SHEET NO.
TR 438	04-19123-00-BR	FAYETTE	13	4
FED. ROAD DIST. NO.		ILLINOIS PROJECT		

CONTRACT NO. 95567

Existing Structure - The existing structure is single span pony trusses and steel stringers with timber deck and timber runners. Substructure is closed concrete abutments with timber cap and piling.

Salvage - Signs

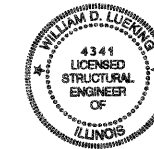


GENERAL NOTES

- The contractor shall drive 1 test pile, as specified, in a permanent location as directed by the Engineer before ordering the remaining piles.
- See Special Provisions for boring logs.
- A Calcium Nitrite Corrosion inhibitor, as covered in the Special Provisions, shall be used in the concrete for precast prestressed concrete deck beams.

TOTAL BILL OF MATERIAL

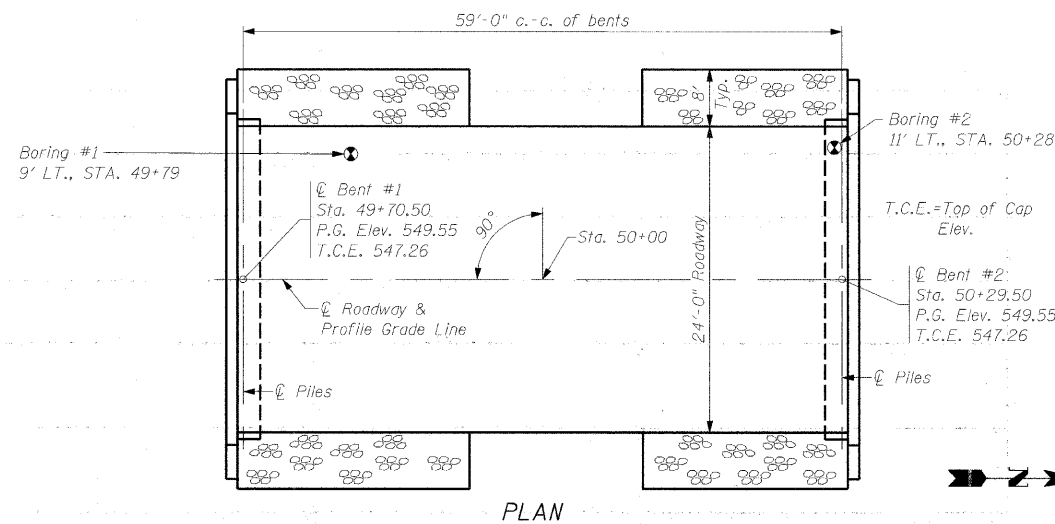
Item	Unit	Super	Sub.		Total
			Piers	Abuts.	
Removal of Existing Structures	Each				1
Concrete Structures	Cu. Yd.			18.2	18.2
Precast Prestressed Concrete Deck Beams (27" Depth)	Sq. Ft.	1440			1440
Steel Railing, Type S-1	Foot	120			120
Reinforcement Bars	Pound			2300	2300
Furnishing Steel Pile HP 10x42	Foot			210	210
Driving Piles	Foot			210	210
Test Pile Steel HP 10x42	Each			1	1
Name Plates	Each			1	1
Concrete Encasement	Cu. Yd.			2.1	2.1



Date: 12/15/2008

Date of License Expiration: 11/30/2010

Signature: William D. Lucking



DESIGN SPECIFICATIONS

2007 AASHTO LRFD Bridge Design Specifications with 2008 Interims

LOADING HL-93

Allow 50# / Sq. Ft. for Future Wearing Surface.

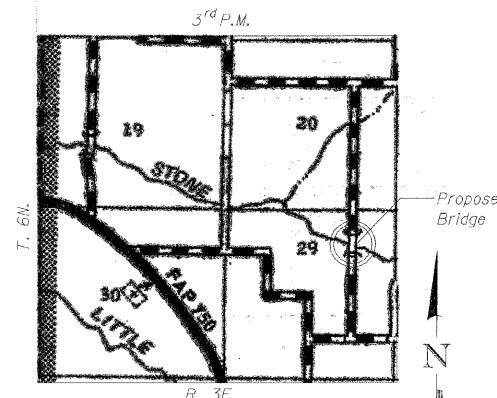
SEISMIC DATA

Seismic Performance Zone (SPZ) = 2
 Design Spectral Acceleration at 1.0 sec. (S_{D1}) = 2.3
 Design Spectral Acceleration at 0.2 sec. (S_{D5}) = 5.0
 Soil Site Class = D

STATION 50+00
 STONE CREEK
 SEC. 04-19123-00-BR BUILT 20...
 PROJECT NO. BR05-051 (085)
 FAYETTE COUNTY
 LOADING HL93
 STR. NO. 026-3441

LETTERING FOR NAME PLATE

Locate Name Plate at Northeast Corner of Bridge (See SLM-CN-CX)



LOCATION SKETCH

INDEX OF SHEETS

- General Plan & Elevation
- SLM-CS-2427-60
- SLM-PD-2736-0
- SLM-PD-2736-0D
- SLM-PD-2748-0
- SLM-PD-2748-0D
- SLM-CA-2427-10
- SLM-CR-TS1
- SLM-CN-CX

PILE DATA (2-ABUTS.)

Pile Type and Size: Steel Piles, HP10x42
 Nominal Required Bearing: 285 kips
 Allowable Resistance Available: 95 kips
 Estimated Pile Length: 30 Feet Bent #1, 30 Feet Bent #2
 Number of Production Piles: 7
 Number of Test Piles: 1 (located in Bent #1)

WATERWAY INFORMATION

Flood	Freq. Yr.	Q C.F.S.	Opening Sq. Ft.		Nat. H.W.E. Ft.	Head - Ft.		Headwater Elev. - Ft.	
			Exist.	Prop.		Exist.	Prop.	Exist.	Prop.
			Design	15		1481	187	362	547.11
Base	100	2403	187	362	547.99	N/A	0.14	N/A	548.13
Overtopping									
Max. Calc.	500								

GENERAL PLAN & ELEVATION

TR 438
 OVER STONE CREEK

SECTION 04-19123-00-BR
 FAYETTE COUNTY
 STATION 50+00

STS | AECOM

2524 S. Broadway
 Salem, Illinois 62881
 618.548.3500
 I.L. Design Firm Reg.
 No. 184-001518
 www.aecom.com