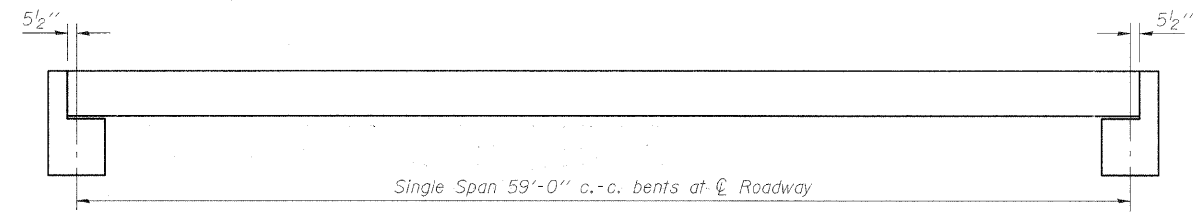
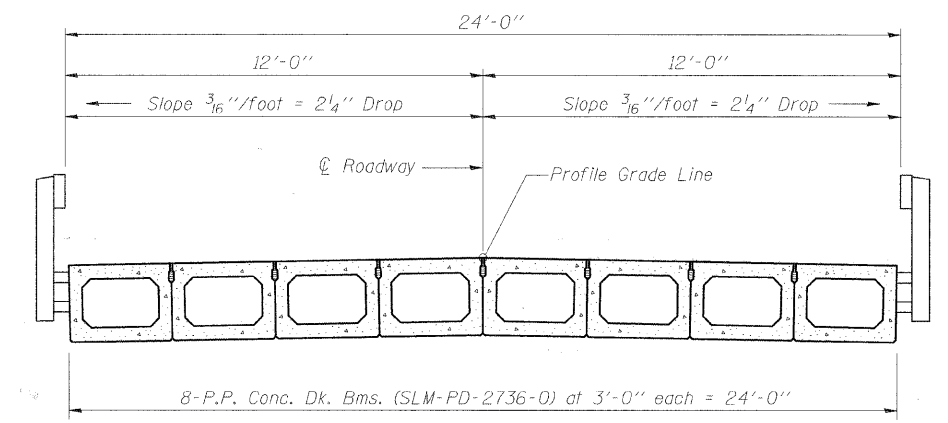


ROUTE NO.	SECTION	COUNTY	TOTAL SHEETS	SHEET NO.
TR 438	04-19123-00-BR	FAYETTE	13	5
FED. ROAD DIST. NO.	ILLINOIS	PROJECT		

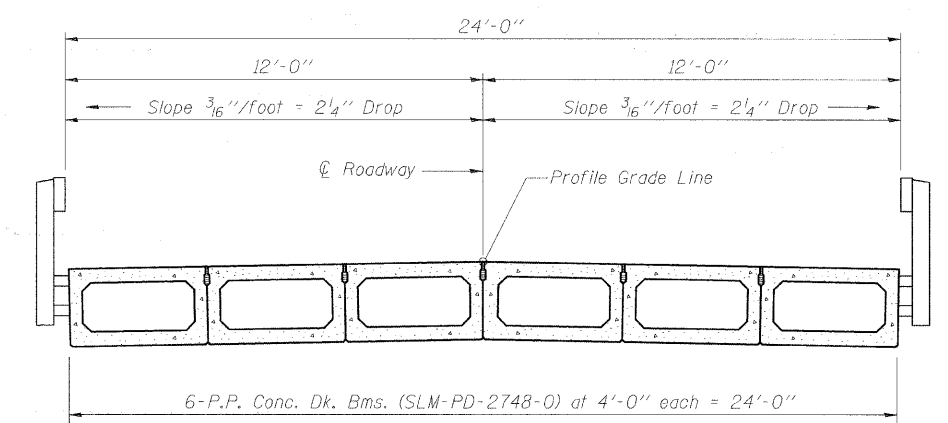
CONTRACT NO. 95567



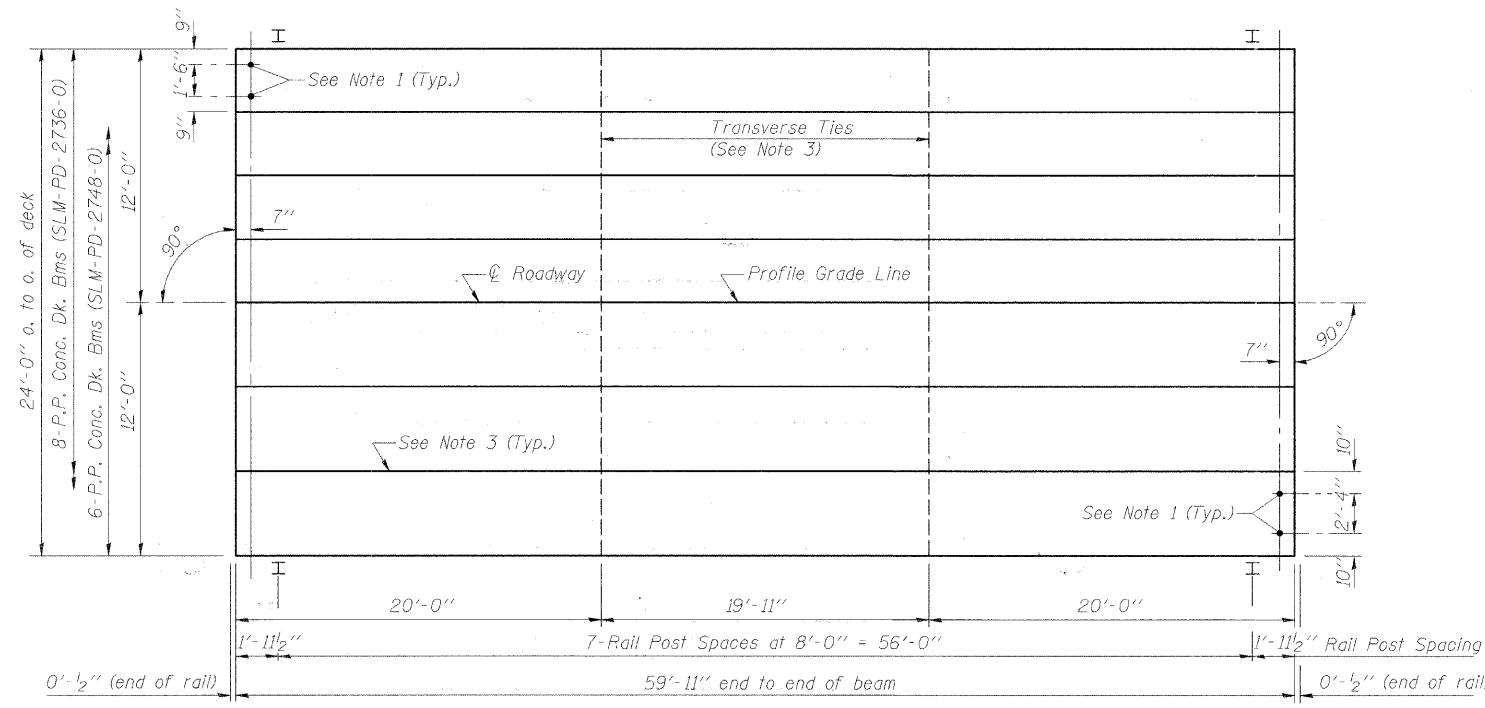
TYPICAL ELEVATIONS



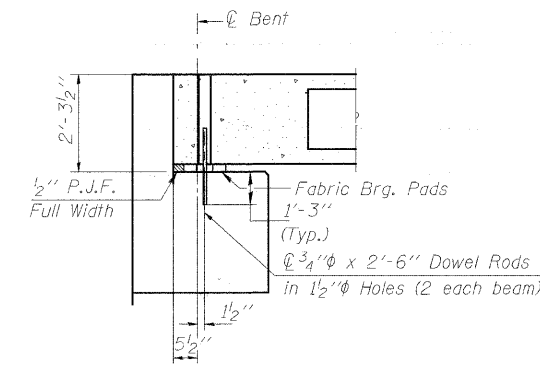
CROSS SECTION



CROSS SECTION



PLAN



SECTION AT ABUTS.
(Along Centerline Beams)

QUANTITIES FOR ONE SPAN

P.P. Conc. Dk. Bm. 27" Dp.	1440 Sq. Ft.
Steel Railing	120 Ft.

- NOTES**
- After beams have been erected, holes shall be drilled into substructure and anchor dowels placed. Dowel holes shall be filled with non-shrink grout to top of beam and allowed to cure min. 24 hrs. prior to grouting the shear keys.
 - Longitudinal keys shall be grouted.
 - The 1" ϕ rods in the transverse tie assembly shall be tightened to a snug fit and the threads set. Pockets that receive transverse tie bar outside shall be filled with grout after transverse tie assembly is in place.

STS | AECOM
2524 S. Broadway
Salem, Illinois 62861
618.548.3500
Ill. Design Firm Reg.
No. 184-001518
www.aecom.com

SLM-CS-2427-60
P.P.C. DECK BEAM
SUPERSTRUCTURE
24' ROADWAY
27" BEAMS
60' SPAN - 0° SKEW