

T.R. RTE.	SECTION	COUNTY	TOTAL SHEETS	SHEET NO.
183	06-01124-00-BR	SHELBY	14	1

CONTRACT NO. 95583

STATE OF ILLINOIS

DEPARTMENT OF TRANSPORTATION

PLANS FOR PROPOSED HIGHWAY BRIDGE PROGRAM

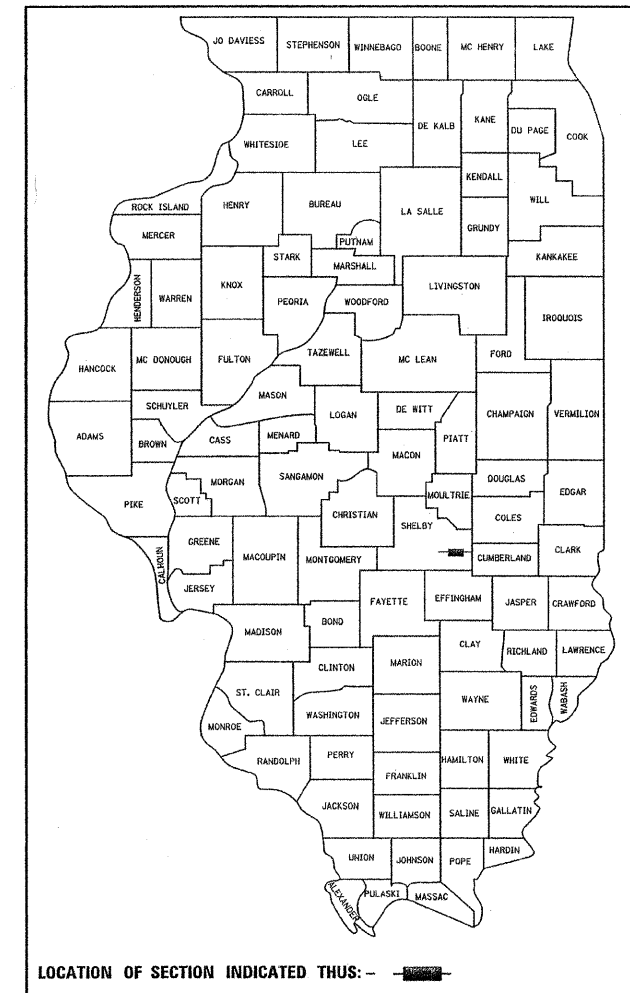
ASH GROVE DISTRICT
SECTION 06-01124-00-BR
PROJECT BROS - 173 (166)
SHELBY COUNTY
T. R. ROUTE 183
JOB NO. C - 97 - 086 - 09
PROPOSED STRUCTURE NO. 087- 3562

INDEX OF SHEETS

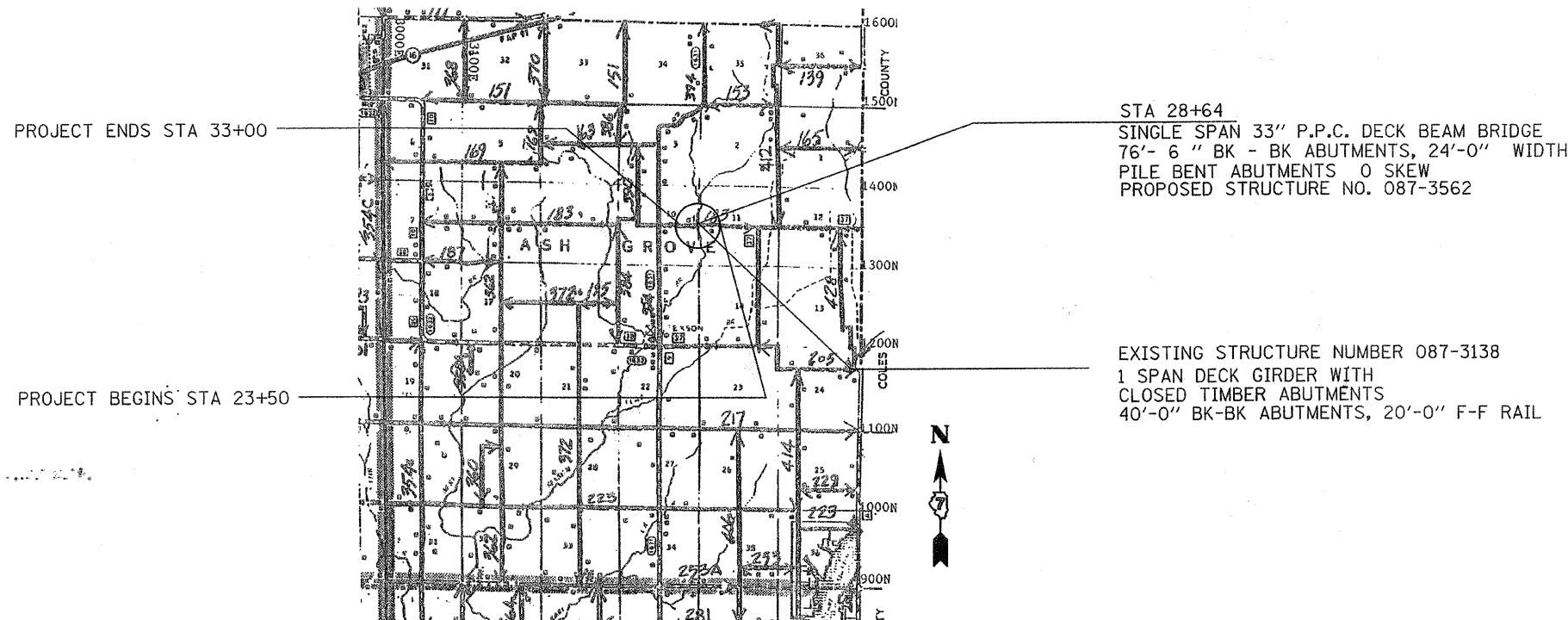
FOR INDEX OF
PLAN SHEETS SEE
SHEET NUMBER 2 OF
14 SHEETS

HIGHWAY STANDARDS

FOR LIST OF
HIGHWAY STANDARDS
SEE SHEET NUMBER 2
OF 14 SHEETS



TWP 11 NORTH, RANGE 6 EAST



PROJECT LOCATION MAP

950 FEET = 0.180 MILES = NET LENGTH OF SECTION

DESIGN INFORMATION

DESIGN CLASSIFICATION: LOCAL ROAD
 CURRENT ADT: 350
 DESIGN YEAR ADT: 440
 DESIGN YEAR: 2029
 DESIGN SPEED 40 M.P.H.

J.U.L.I.E.
 JOINT UTILITY LOCATION INFORMATION FOR EXCAVATION
 1-800-892-0123 (TOLL FREE)

CONTRACT NO. 95583

PLANS PREPARED BY:
SHELBY CO HWY DEPT
R. R. 3 BOX 38A
SHELBYVILLE IL 62565
217-774-2721



PLANS PREPARED BY:

S. ALAN SPESARD, COUNTY ENGINEER, PE
ILLINOIS PROFESSIONAL ENGINEER 062-052965
EXPIRES 11-30-09

2 APRIL 2009

DATE

2 April 20 09

APPROVED
HIGHWAY COMMISSIONER

2 APRIL 20 09

APPROVED
COUNTY ENGINEER, SHELBY COUNTY

4-10 20 09

PASSED
District Seven Engineer of
Local Roads and Streets

4-10 20 09

RELEASING FOR
 BID BASED ON
 LIMITED REVIEW
 DEPUTY DIRECTOR OF HIGHWAYS, REGION ENGINEER
 REGION FOUR ENGINEER

STATE OF ILLINOIS
 DEPARTMENT OF TRANSPORTATION