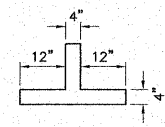
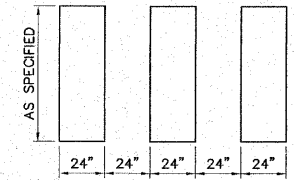


TYPICAL YIELD LINE DETAIL
SCALE: 1" = 2'



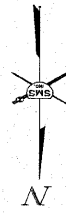
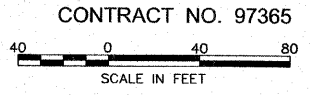
TYPICAL PARKING TEE DETAIL
SCALE: 1" = 2'



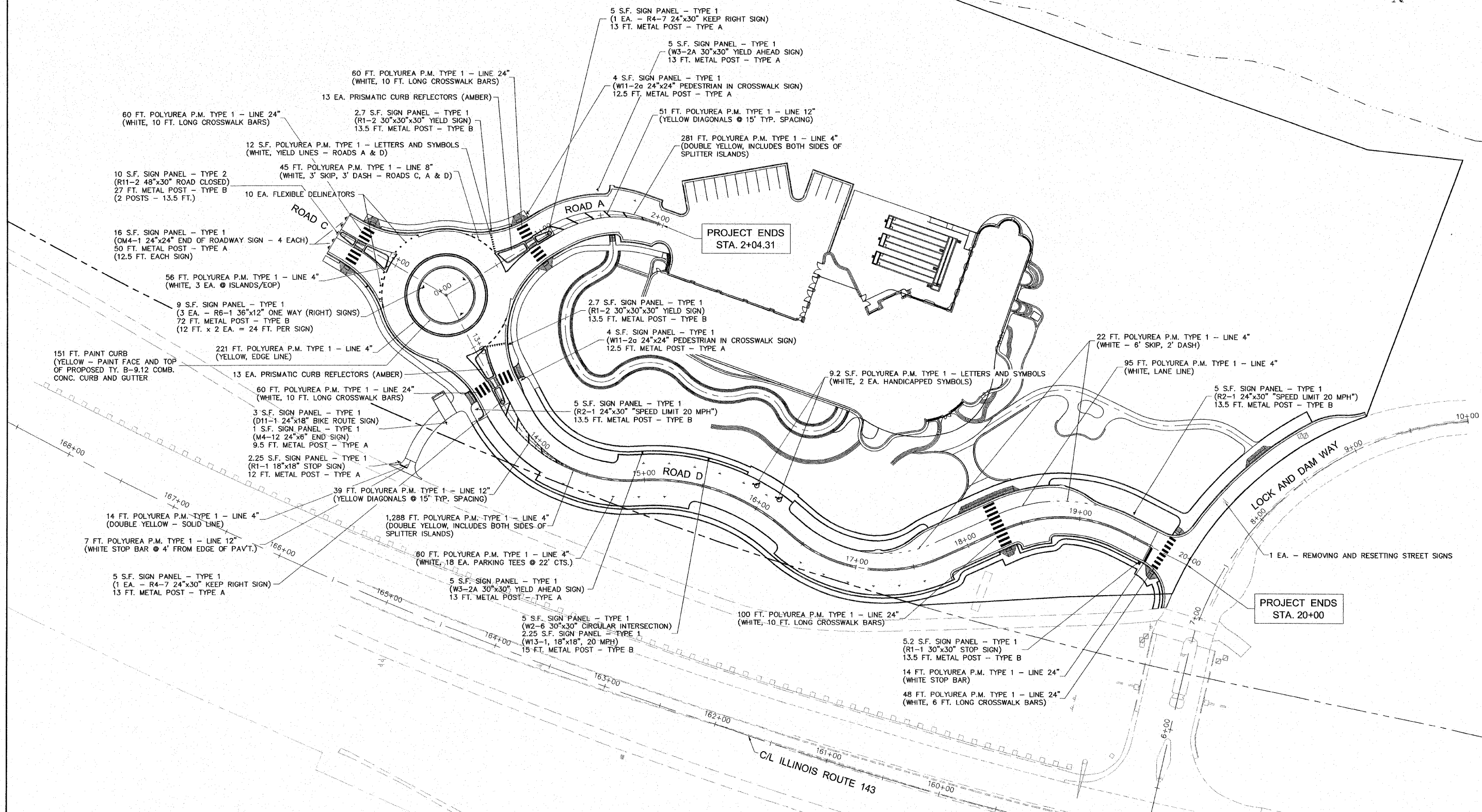
TYPICAL CROSSWALK BARS DETAIL
SCALE: 1" = 4'

NOTES

1. POLYUREA PAVEMENT MARKING TYPE 1 IS ABBREVIATED AS POLYUREA P.M. TYPE 1



NO.	REVISIONS



SMS ENGINEERS
Sheppard, Morgan & Schwaab, Inc.
CONSULTING ENGINEERS AND LAND SURVEYORS
215 Market Street, P.O. Box E, Alton, IL 62002 618462-2755 E-mail: mail@smsengineers.com
10 Central Industrial Drive, Granite City, IL 62040 618677-8700 E-mail: mail@smsengineers.com
DESIGN FIRM # 184-000992

LEWIS & CLARK COMMUNITY COLLEGE
SECTION 05 - 00001 - 00 - PK
ACCESS ROADS FOR THE
NATIONAL GREAT RIVERS RESEARCH AND EDUCATION CENTER
PAVEMENT MARKING & SIGNING PLAN

DWG. NO.	LP\A\AIC\405829
PHASE I PAVT MARK.DWG	
REF. BK.	PG. -
JOB NO.	457111.1
DSN.	BY: DEG
DWN.	BY: CAD
CHK.	BY: DEG
DATE:	SEPT. 8, 2008
SCALE:	AS SHOWN
SHEET	22 OF 36

S:\Land Projects\A\AIC\405829\Drawings\Phase I\Print\Mark.dwg, 2/2/2008 8:21:27 AM, jman, 1:40