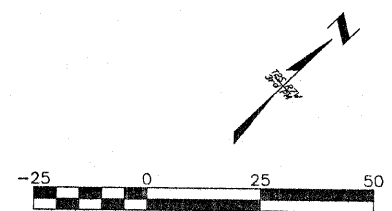
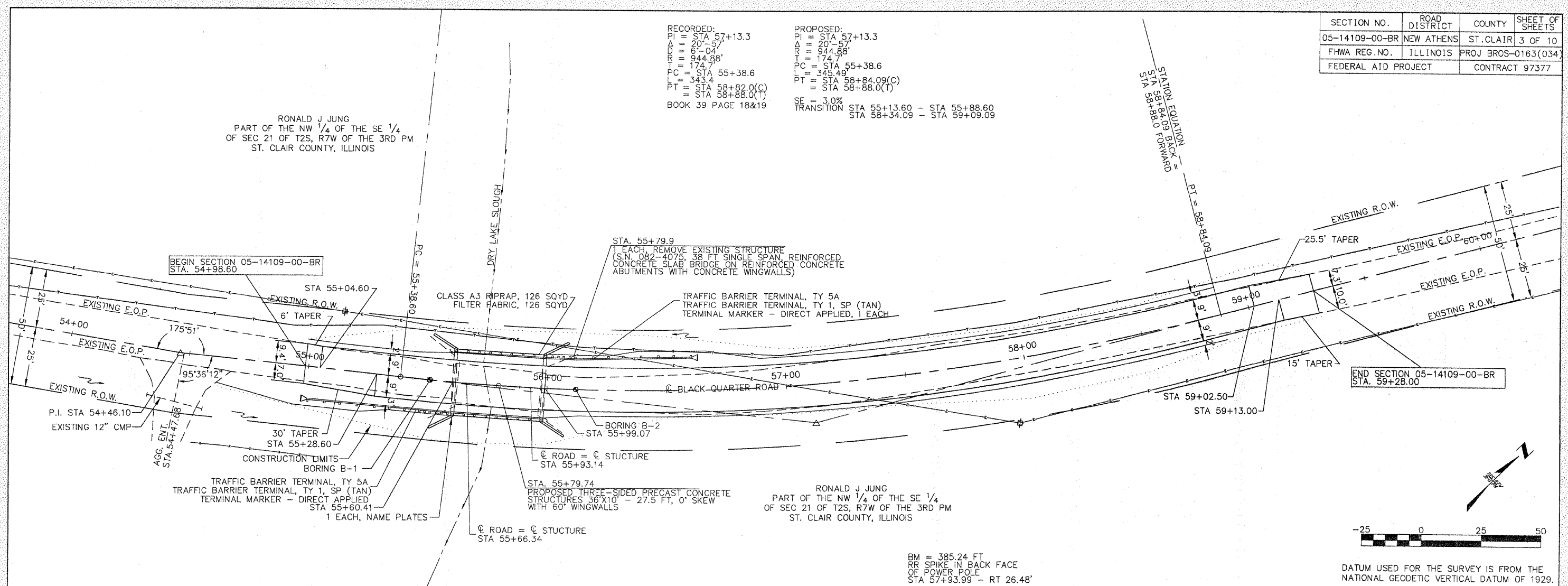


SECTION NO.	ROAD DISTRICT	COUNTY	SHEET OF SHEETS
05-14109-00-BR	NEW ATHENS	ST. CLAIR	3 OF 10
FHWA REG. NO.	ILLINOIS	PROJ BROS-0163(034)	
FEDERAL AID PROJECT		CONTRACT 97377	

RECORDED:  
 PI = STA 57+13.3  
 $\Delta = 20'-57"$   
 $RT = 944.88'$   
 $T = 174.7'$   
 PC = STA 55+38.6  
 $L = 343.4'$   
 PT = STA 58+82.0(C)  
 = STA 58+88.0(T)  
 BOOK 39 PAGE 18&19

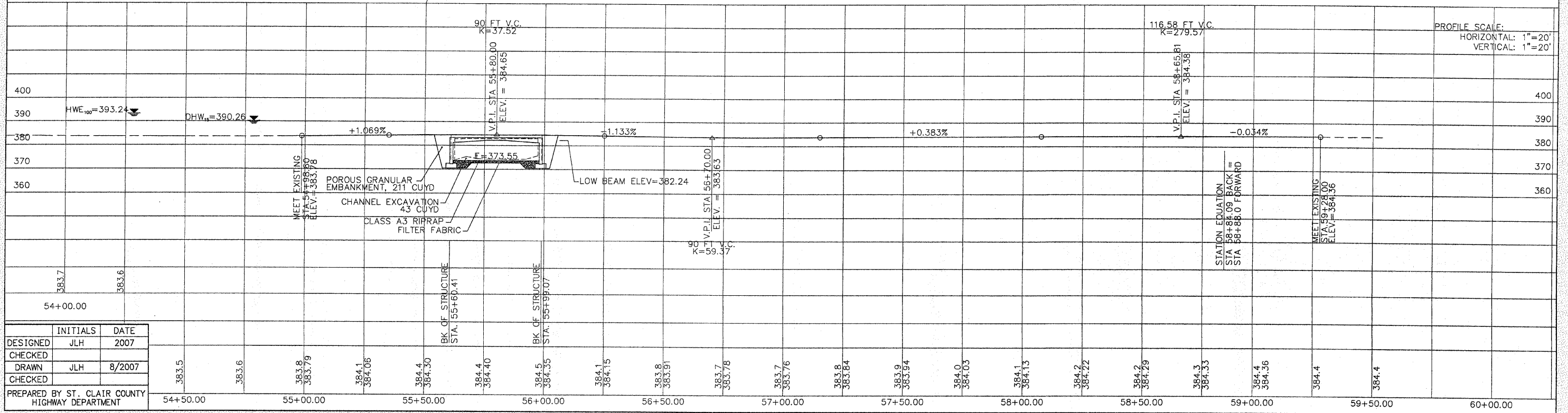
PROPOSED:  
 PI = STA 57+13.3  
 $\Delta = 20'-57"$   
 $RT = 944.88'$   
 $T = 174.7'$   
 PC = STA 55+38.6  
 $L = 345.49'$   
 PT = STA 58+84.09(C)  
 = STA 58+88.0(T)  
 SE = 3.0%  
 TRANSITION STA 55+13.60 - STA 55+88.60  
 STA 58+34.09 - STA 59+09.09

RONALD J JUNG  
 PART OF THE NW 1/4 OF THE SE 1/4  
 OF SEC 21 OF T2S, R7W OF THE 3RD PM  
 ST. CLAIR COUNTY, ILLINOIS



BM = 385.24 FT  
 RR SPIKE IN BACK FACE  
 OF POWER POLE  
 STA 57+93.99 - RT 26.48'

DATUM USED FOR THE SURVEY IS FROM THE  
 NATIONAL GEODETIC VERTICAL DATUM OF 1929.



	INITIALS	DATE
DESIGNED	JLH	2007
CHECKED		
DRAWN	JLH	8/2007
CHECKED		

PREPARED BY ST. CLAIR COUNTY  
 HIGHWAY DEPARTMENT

STATION	ELEVATION
54+50.00	383.5
54+60.00	383.6
54+70.00	383.8
54+80.00	383.79
54+90.00	384.1
55+00.00	384.06
55+10.00	384.4
55+20.00	384.30
55+30.00	384.4
55+40.00	384.40
55+50.00	384.5
55+60.00	384.35
55+70.00	384.1
55+80.00	384.15
55+90.00	383.8
56+00.00	383.91
56+10.00	383.7
56+20.00	383.78
56+30.00	383.7
56+40.00	383.76
56+50.00	383.8
56+60.00	383.84
56+70.00	383.9
56+80.00	383.94
56+90.00	384.0
57+00.00	384.03
57+10.00	384.1
57+20.00	384.13
57+30.00	384.2
57+40.00	384.22
57+50.00	384.2
57+60.00	384.29
57+70.00	384.3
57+80.00	384.33
57+90.00	384.4
58+00.00	384.4
58+10.00	384.4
58+20.00	384.4
58+30.00	384.4
58+40.00	384.4
58+50.00	384.4
58+60.00	384.4
58+70.00	384.4
58+80.00	384.4
58+90.00	384.4
59+00.00	384.4
59+10.00	384.4
59+20.00	384.4
59+30.00	384.4
59+40.00	384.4
59+50.00	384.4
59+60.00	384.4
59+70.00	384.4
59+80.00	384.4
59+90.00	384.4
60+00.00	384.4