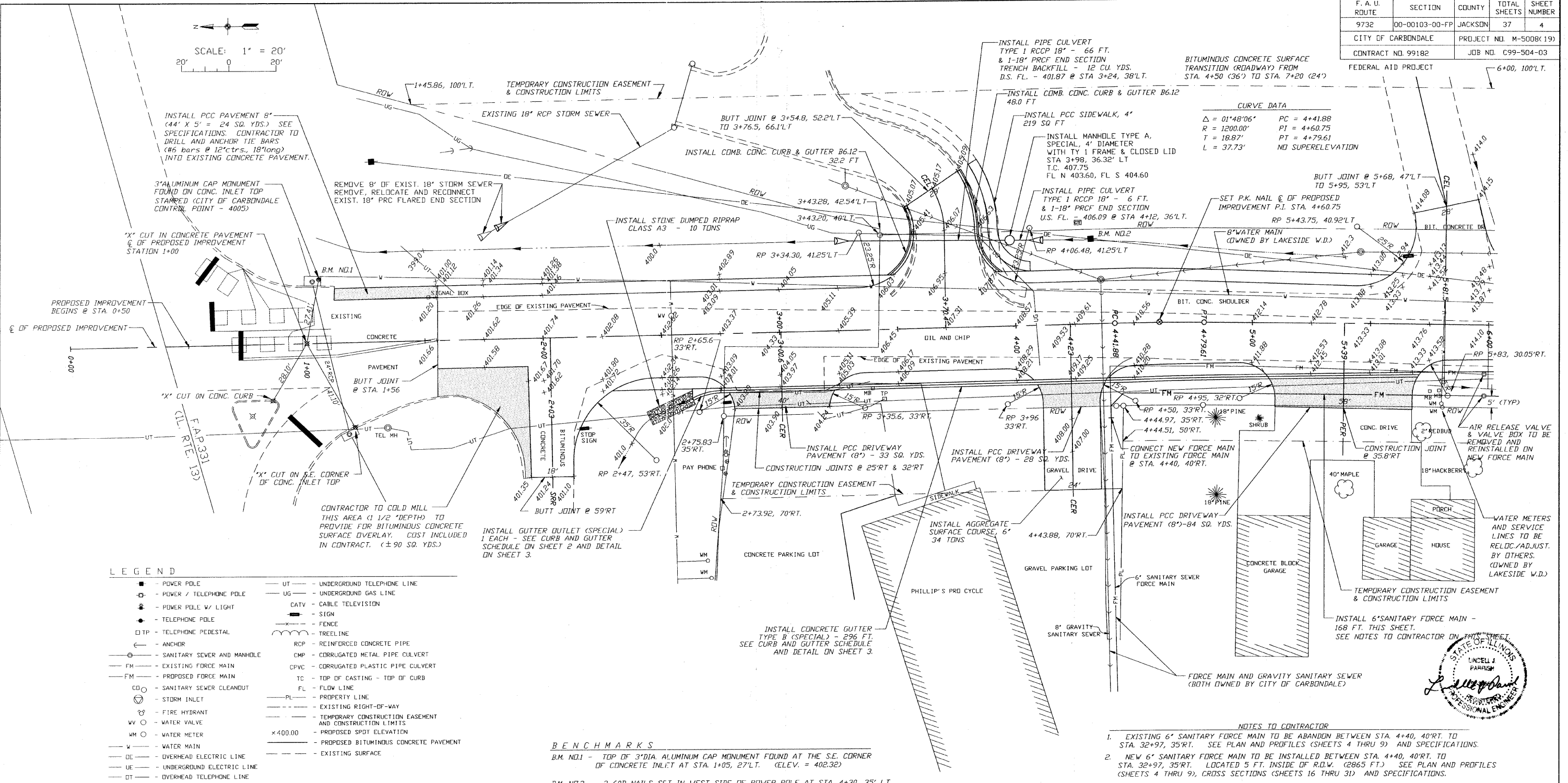
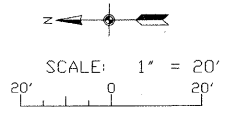


F. A. U. ROUTE	SECTION	COUNTY	TOTAL SHEETS	SHEET NUMBER
9732	00-00103-00-FP	JACKSON	37	4
CITY OF CARBONDALE	PROJECT NO.	M-5008(19)		
CONTRACT NO. 99182	JOB NO.	C99-504-03		
FEDERAL AID PROJECT			6+00, 100'L.T.	



CURVE DATA

$\Delta = 01^{\circ}48'06''$	PC = 4+41.88
R = 1200.00'	PI = 4+60.75
T = 18.87'	PT = 4+79.61
L = 37.73'	NO SUPERELEVATION

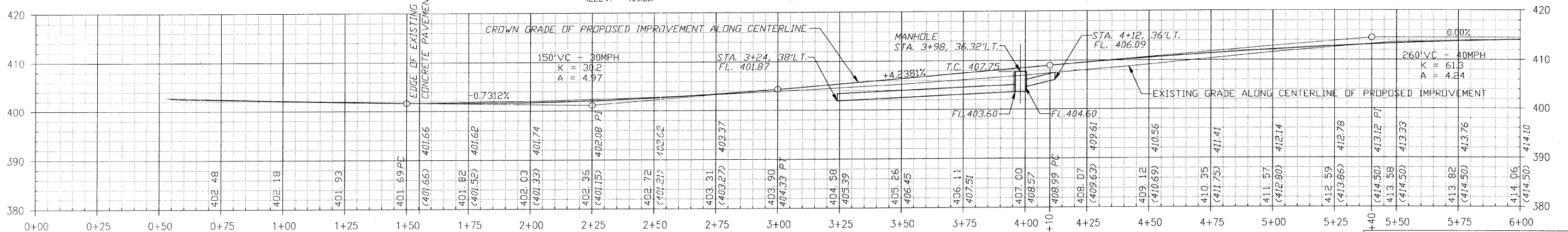
- LEGEND**
- POWER POLE
 - POWER / TELEPHONE POLE
 - POWER POLE W/ LIGHT
 - TELEPHONE POLE
 - TELEPHONE PEDESTAL
 - ANCHOR
 - SANITARY SEWER AND MANHOLE
 - EXISTING FORCE MAIN
 - FM — PROPOSED FORCE MAIN
 - SANITARY SEWER CLEANOUT
 - STORM INLET
 - FIRE HYDRANT
 - WATER VALVE
 - WM — WATER METER
 - W — WATER MAIN
 - DE — OVERHEAD ELECTRIC LINE
 - UE — UNDERGROUND ELECTRIC LINE
 - OT — OVERHEAD TELEPHONE LINE
 - UT — UNDERGROUND TELEPHONE LINE
 - UG — UNDERGROUND GAS LINE
 - CATV — CABLE TELEVISION
 - SIGN
 - FENCE
 - TREELINE
 - RCP — REINFORCED CONCRETE PIPE
 - CMP — CORRUGATED METAL PIPE CULVERT
 - CPVC — CORRUGATED PLASTIC PIPE CULVERT
 - TC — TOP OF CASTING - TOP OF CURB
 - FL — FLOW LINE
 - PL — PROPERTY LINE
 - — — — — EXISTING RIGHT-OF-WAY
 - — — — — TEMPORARY CONSTRUCTION EASEMENT AND CONSTRUCTION LIMITS
 - — — — — PROPOSED SPOT ELEVATION
 - — — — — PROPOSED BITUMINOUS CONCRETE PAVEMENT
 - — — — — EXISTING SURFACE

BENCHMARKS

B.M. NO.1 - TOP OF 3" DIA. ALUMINUM CAP MONUMENT FOUND AT THE S.E. CORNER OF CONCRETE INLET AT STA. 1+05, 27'L.T. (ELEV. = 402.32)

B.M. NO.2 - 2-60D NAILS SET IN WEST SIDE OF POWER POLE AT STA. 4+30, 35' L.T. (ELEV. = 409.51)

- NOTES TO CONTRACTOR**
- EXISTING 6" SANITARY FORCE MAIN TO BE ABANDONED BETWEEN STA. 4+40, 40'RT. TO STA. 32+97, 35'RT. SEE PLAN AND PROFILES (SHEETS 4 THRU 9) AND SPECIFICATIONS.
 - NEW 6" SANITARY FORCE MAIN TO BE INSTALLED BETWEEN STA. 4+40, 40'RT. TO STA. 32+97, 35'RT. LOCATED 5 FT. INSIDE OF R.O.W. (2865 FT.) SEE PLAN AND PROFILES (SHEETS 4 THRU 9), CROSS SECTIONS (SHEETS 16 THRU 31) AND SPECIFICATIONS.



CIP NO. ST0102 - REED STATION ROAD
 PLAN AND PROFILE
 STA. 0+00 TO STA. 6+00