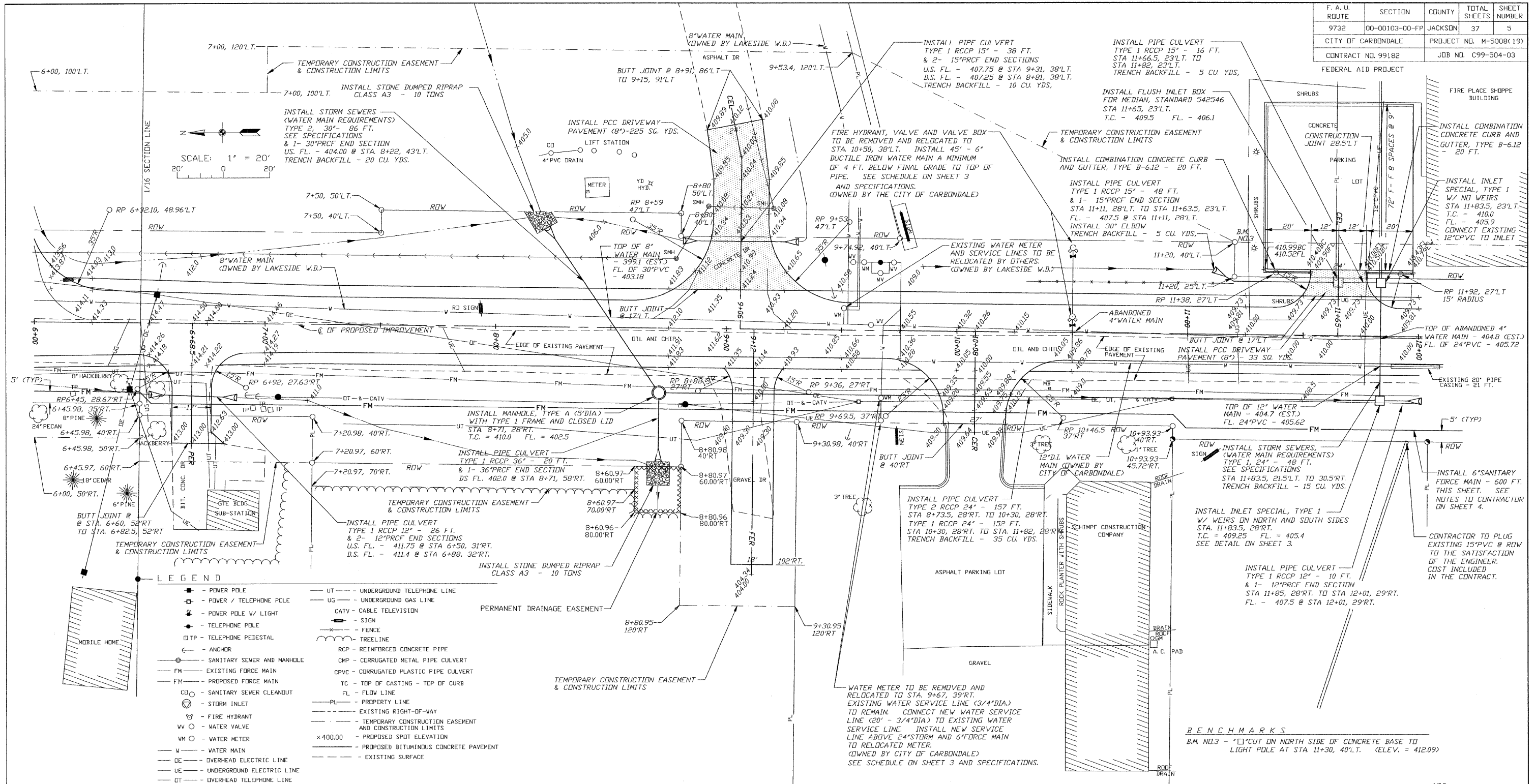
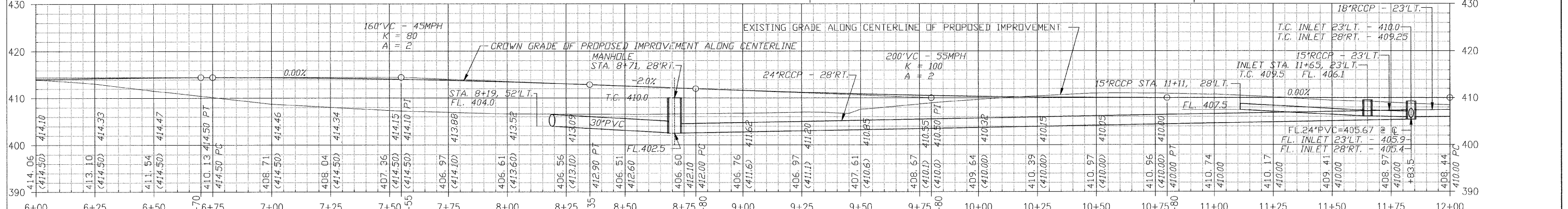


F. A. U. ROUTE	SECTION	COUNTY	TOTAL SHEETS	SHEET NUMBER
9732	00-00103-00-FP	JACKSON	37	5
CITY OF CARBONDALE		PROJECT NO. M-5008(19)		
CONTRACT NO. 99182		JOB NO. C99-504-03		
FEDERAL AID PROJECT				



**LEGEND**

- P— POWER POLE
- P/T— POWER / TELEPHONE POLE
- P/L— POWER POLE W/ LIGHT
- T— TELEPHONE POLE
- TP— TELEPHONE PEDESTAL
- A— ANCHOR
- S— SANITARY SEWER AND MANHOLE
- FM— EXISTING FORCE MAIN
- FM— PROPOSED FORCE MAIN
- CS— SANITARY SEWER CLEANOUT
- S— STORM INLET
- F— FIRE HYDRANT
- W— WATER VALVE
- WM— WATER METER
- W— WATER MAIN
- OE— OVERHEAD ELECTRIC LINE
- UE— UNDERGROUND ELECTRIC LINE
- OT— OVERHEAD TELEPHONE LINE
- UT— UNDERGROUND TELEPHONE LINE
- UG— UNDERGROUND GAS LINE
- CATV— CABLE TELEVISION
- S— SIGN
- F— FENCE
- T— TREELINE
- RCP— REINFORCED CONCRETE PIPE
- CMP— CORRUGATED METAL PIPE CULVERT
- CPVC— CORRUGATED PLASTIC PIPE CULVERT
- TC— TOP OF CASTING - TOP OF CURB
- FL— FLOW LINE
- PL— PROPERTY LINE
- — EXISTING RIGHT-OF-WAY
- — TEMPORARY CONSTRUCTION EASEMENT AND CONSTRUCTION LIMITS
- x400.00— PROPOSED SPOT ELEVATION
- — EXISTING SURFACE



CIP NO. ST0102	REED STATION ROAD
PLAN AND PROFILE	
STA. 6+00 TO STA. 12+00	