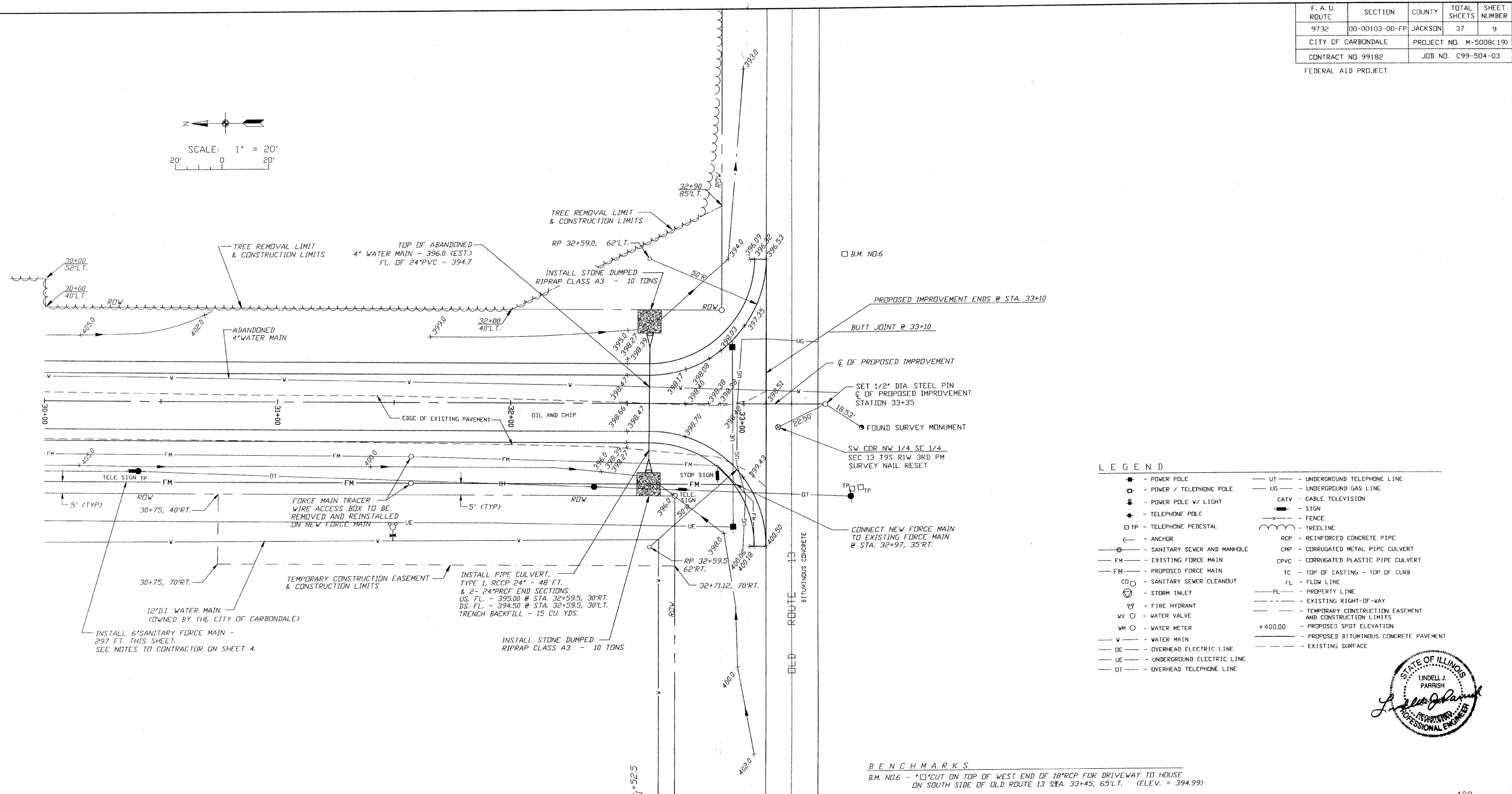
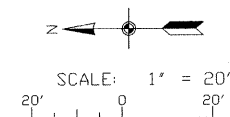


F. A. U. ROUTE	SECTION	COUNTY	TOTAL SHEETS	SHEET NUMBER
9732	00-00103-00-FP	JACKSON	37	9
CITY OF CARBONDALE		PROJECT NO. M-5008(19)		
CONTRACT NO. 99182		JOB NO. C99-504-03		

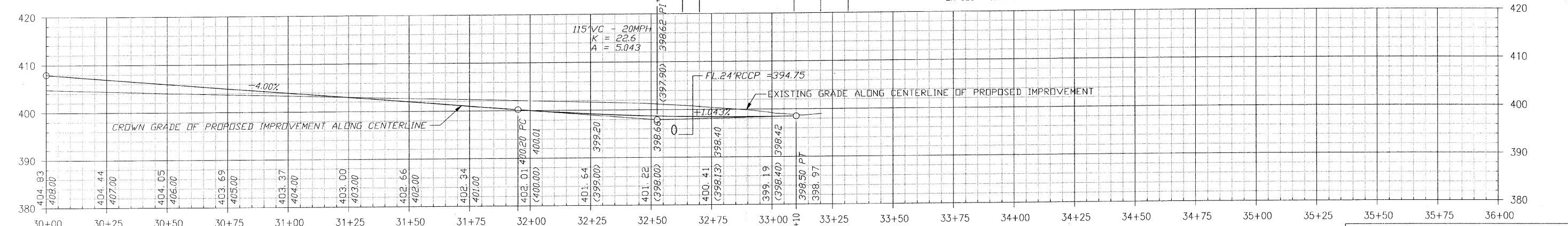
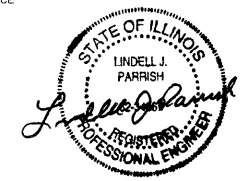
FEDERAL AID PROJECT



LEGEND

■	- POWER POLE	UT	- UNDERGROUND TELEPHONE LINE
□	- POWER / TELEPHONE POLE	UG	- UNDERGROUND GAS LINE
⊕	- POWER POLE W/ LIGHT	CATV	- CABLE TELEVISION
●	- TELEPHONE POLE	—	- SIGN
□ TP	- TELEPHONE PEDESTAL	—	- FENCE
⊖	- ANCHOR	—	- TREELINE
⊙	- SANITARY SEWER AND MANHOLE	RCP	- REINFORCED CONCRETE PIPE
— FM	- EXISTING FORCE MAIN	CPVC	- CORRUGATED METAL PIPE CULVERT
— FM	- PROPOSED FORCE MAIN	CPVC	- CORRUGATED PLASTIC PIPE CULVERT
⊙	- SANITARY SEWER CLEANOUT	TC	- TOP OF CASTING - TOP OF CURB
⊙	- STORM INLET	FL	- FLOW LINE
⊕	- FIRE HYDRANT	— PL	- PROPERTY LINE
WV	- WATER VALVE	---	- EXISTING RIGHT-OF-WAY
WM	- WATER METER	---	- TEMPORARY CONSTRUCTION EASEMENT AND CONSTRUCTION LIMITS
W	- WATER MAIN	×400.00	- PROPOSED SPOT ELEVATION
OE	- OVERHEAD ELECTRIC LINE	---	- PROPOSED BITUMINOUS CONCRETE PAVEMENT
UE	- UNDERGROUND ELECTRIC LINE	---	- EXISTING SURFACE
OT	- OVERHEAD TELEPHONE LINE		

BENCHMARKS
 B.M. NO.6 - 1" CUT ON TOP OF WEST END OF 18" RCP FOR DRIVEWAY TO HOUSE ON SOUTH SIDE OF OLD ROUTE 13 STA. 33+45, 65' L.T. (ELEV. = 394.99)



CIP NO. ST0102 - REED STATION ROAD
PLAN AND PROFILE
STA. 30+00 TO STA. 33+10